

# INTO OKUMELE UYAZI

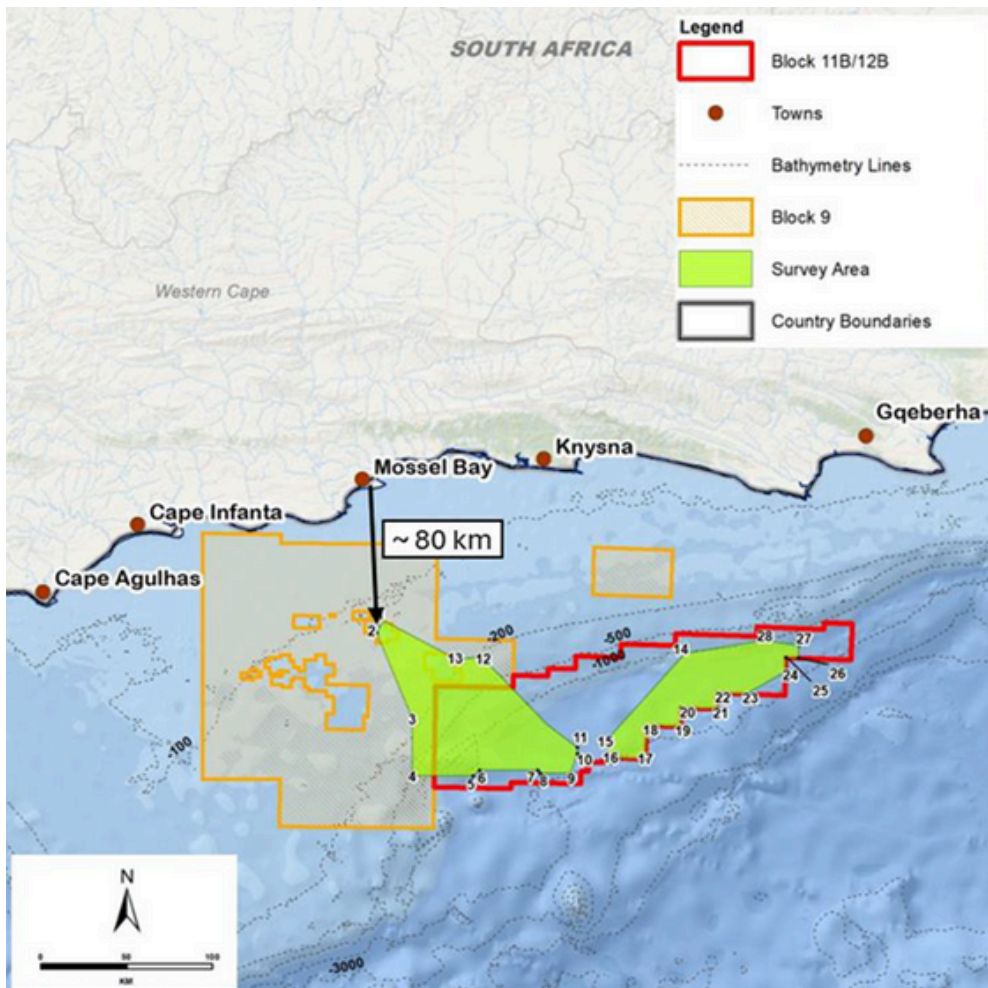
**I-Main Street 1549 (Pty) Ltd  
ImiSebenzi yoPhando olucetywayo  
kwiiBloko 9 kunye ne-11B/12B**

**Unxweme loMzantsi, eMzantsi Afrika**

**Lungiselela kwaye ungenise izimvo zakho malunga  
neNgxelo yeNgcingane esayilwayo ngoLwesine, umhla**

**wesi-3 ku-Epreli 2025.**

**Indawo yoMdla**



Umfanekiso 1: I-map yeeNdawo zoPhando eziCetywayo kuNxweme loMzantsi Afrika.

Umthombo: 3 eyoKwindla wama-2025 ngeNgxelo esiSiseko ye-Scoping, iSihlomelo D2

**I-Main Street 1549 (Pty) Ltd (“Isitalato esikhulu”) sicebisa imisebenzi yovavanyo kwi-Block zeLayisensi 9 kunye ne-11B/12B, ezimi kufuphi nonxweme olusemazantsi oMzantsi Afrika. Olu phando luyinxalenye yophononongo oluqhubekayo kunye nophuhliso olunokubakho lwe-oil ne-gas kwi-Outeniqua Basin.**

lipokotho ze-gas yendalo zifunyenwe kwi-Block 11B/12B kwimithombo yase-Brulpadda nase-LuiperdAmaqabane. Amashishini ahlangeneyo ngelo xesha aqalisa inkqubo yokufumana iLungelo leMveliso (“Production Right”), 12/4/013 PR, kunye neSigunyaziso sokuSingqongileyo esiyimfuneko (“Environmental Authorisation”) sokuphuhlisa ezi zixhobo. Oku bekukhokelwa yi-TotalEnergies EP South Africa (“TEEPSA”), ethe yamisela inkqubo yoVavanyo lweMpembelelo yokuSingqongileyo neNtlalo (“Environmental and Social Impact Assessment”). Le nkqubo ibandakanya uthatho-nxaxheba loluntu oluqhutywe unyaka wonke wama-2022 nowama-2023.

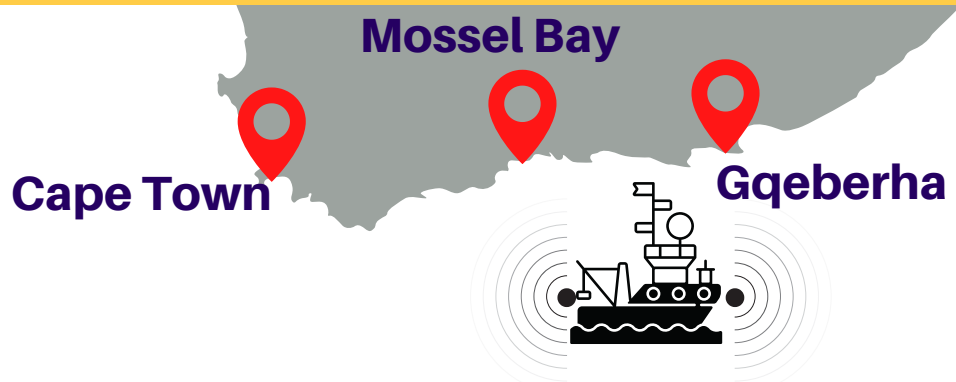
Intsebenziswano yokuqala ibiquka i-TEEPSA, i-QatarEnergy, i-Canadian Natural Resources International (South Africa) Limited kunye ne-Main Street. I-TEEPSA, i-QatarEnergy kunye ne-Canadian Natural Resources ziye zarhoxa ngokupheleleyo kwi-project ye-Block 11B/12B.

**New**

Umnini  
weLungelo  
lokuPhononon  
ga oMtsha

**I-Main Street iphethe iLungelo lokuHlola 12/3/067 over Block 11B/12B (Exploration Right) kwaye ngoku sikhokela iprojekthi emva kokuba ezinye iinkampani zirhoxile. Isicwangciso seMaist Street sokuqhuba uhlobo ‘oluphantsi nolungenahlaselo’ kwiBlock11B/12B nakwiBlock ekufuphi neBlock-9. IBlock-9 ibanjwe yiPetroSA phantsi kwe-Exploration Right 12/4/061.**

Indawo yovavanyo ibekwe kude nonxweme olusemazantsi, inabela phakathi kwe-Mosselbay neGqeberha. Igubungela iinxalenye zee-block ezimbini kulwandlekazi ezaziwa njenge Blocks 9 kunye ne-11B/12B. Iqala kwi 65 km kude nonxweme ukusuka elunxwemeni kweyona ndawo ikufutshane nayo, malunga ne 80 km ukusuka eMossel Bay kwaye igubungela i-8620 km<sup>2</sup> yolwandle, ngobunzulu bamanzi ukusuka kwi-100m ukuya kwi-2200m. Ukukhutshwa kwe-oil kunye ne-gas kwindawo. Imisebenzi iya kubandakanya ukwenza i-map yomgangatho wolwandle, ukuqokelela ii-sample kunye nokulinganisa iimeko zolwandle.





Iidolophu eziselunxwemeni kunye neendawo zokuhlala, ezifana neMossel Bay, Knysna kunye neGqeberha, zinokuchaphazeleka.

## Uvavanyo kunye neminye imisebenzi ecetywayo Yintoni uphando?

Uphononongo kwi-oil ekude nolwandle kunye nophononongo lwe-gas lubandakanya ukufunda umgangatho wolwandle ukuze kufunyanwe oovimba abanokuba khona be-oil ne-gas. Olu phando lusebenzisa amaza esandi ukuvelisa imifanekiso yomgangatho wolwandle.



Yongeza isihloko kuMfanekiso 2: Umzekelo wenqanawa yovavanyo esetyenziselwa ukwenza i-sample yolwandle. Umthombo: (Fugro, 2022)

Uvavanyo lujolise ekuhloleni iimeko ze-metoccean, benthic, geotechnical kunye ne-geophysical kummandla ukwazisa ukuyilwa kunye nokulungelelaniswa kweziseko eziluncedo zemveliso zexesha elizayo ezifana nemingxuma, imibhobho kunye nezibonelelo ezingaphantsi kolwandle.



## Imisebenzi yovavanyo ecetywayo ibandakanya: Imephu yomgangatho wolwandle



I-Bathymetry kunye nophando lwe-sonar kwi-map yomgangatho wolwandle ukuchonga iinduli ezingaphantsi kwamanzi, iintlambo kunye namatye. Inqanawa isebenzisa izixhobo ezikhethekileyo ukuthumela amaza esandi kulwandle. Amaza esandi esibethayo ayashicilelwa ukwenza ii-map ezinenkcukacha zamazantsi olwandle.

## Ukuqokelela ii-sample ezikumgangatho wolwandle



Ii-sample zomgangatho wolwandle ziyaqokelelwa kwaye iimeko zolwandle njengamaza, imisinga kunye nobushushu ziyalinganiswa. Inqanawa isebenzisa izixhobo zokubamba ii-sample zentlenge. Emva koko izixhobo zifakwe emanzini ukucishilela iinkcukacha ezininzi.

## Ukusebenzisa ii-robot zangaphantsi kwamanzi (Remote Operated Vehicles)



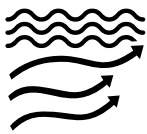
Ii-robot (ROV) zisetyenziselwa ukuthatha imifanekiso yomgangatho wolwandle.

## UVavanyo olusisiseko sokusingqongileyo



UVavanyo lokusingqongileyo lusetyenziselwa ukufunda okusingqongileyo elwandle. Inqanawa iqokelela amanzi, intlenge kunye nee-sample zobomi bolwandle kwaye isebenzisa izixhobo zoluvo ukulinganisa izinto ezifana nokuphucuka komgangatho wamanzi kunye nobushushu. Oku kunceda ukuqonda impilo yolwandle phambi kokuba nawuphi na umsebenzi uqalise.

## Uphando lwemozulu yolwandle



I-Metoccean Surveys iqokelela iinkcukacha malunga nokusingqongileyo elwandle, kuquka iimeko zemozulu kunye neemeko zolwandle. Olu phononongo luya kulinganisa ubude bamaza, amaxesha amaza, imisinga yamaza, ubushushu bamanzi olwandle, isantya somoya, kunye necala umoya ophephezela ngakulo.

## UVavanyo lweNdawo eNgabandakanywayo kwiSikhephe



UMmandla oKhethekileyo weMikhumbi yoVavanyo yommandla wee-metre ezingama-500 ojikeleze inqanawa yovavanyo ayivumelekanga ukusetyenziswa zezinye izikhephe, kubandakanywa nezikhithshane zokuloba. Oku kukudala 'indawo ekungayiwayo kuyo' ukwenzela ukuba uphando lwenziwe ngaphandle kokuphazamiseka.



# IXESHA LEZIGANEKO

## ILUNGELO LOKUPHONONONGA

I-Main Street 1549 (Pty) Ltd ineLungelo lokuPhonononga ngaphaya kwe-Block 11B/12B.

## INKQUBO YOVAVANYO LWEMPEMBELELO YOKUSINGQONGILEYO

### ISIGABA SOKUSEBENZA:

Esi sigaba sijolise ekumiseleni oko kufuneka kuhlolwe kuVavanyo lweMpembelelo yokusiNgqongileyo (Environmental Impact Assessment), indlela yokufikelela kuvavanyo kwaye loluphi ulwazi olunokufuneka ukuchonga iimpembelelo ezinokubakho zomsebenzi. Olu lwazi lufakwe kwiNgxelo esiSiseko ye-Scoping.

**IZIMVO ZIKARHULUMENTE:** Uluntu lunikwa ithuba lokuhlomla malunga neNgxelo esiSiseko ye-Scoping.

### Silapha

Oku kuquka onke amagqabantshintshi afunyenweyo kwiNgxelo yeNgcingane eyidrafiti (Draft Scoping Report) kwaye ingeniswe ukuze yamkelwe.

### INGXELO YOKUGQIBELA YESIKOPI IYAPAPASHWA:

I-SLR Consulting (uMzantsi Afrika) yonyulwe njengeGosa loVavanyo lokuSingqongileyo (Environmental Assessment Practitioner) ukuze liqhube inkqubo yovavanyo.

## YINTONI ELANDELAYO?

Emva kokuba iDraft Scoping Report yamkelwe, onke amaQela abhalisiweyo anomdla naChaphazelekayo aya kwaziswa ngesiphumo kunye nezizathu zesigqibo kwiintsuku ezili-14 zomhla wesigqibo. Ukuba iDraft Scoping Report yamkelwe, iprojekthi iya kudlulela kwisigaba se-EIA.

### ISIGABA SE-EIA:

Uphononongo lweengcali: i-EAP (Environmental Assessment Practitioner) iya kwenza i-EIA (Environmental Impact Assessment) kunye nophononongo lweengcali.

Izimvo zoluntu: Ii-I&APs (Interested and Affected Parties) ziya kuba nelinye ithuba lokuhlomla ngengxelo eyilwayo ye-EIA. Ingxelo yokugqibela ye-EIA epapashiweyo: Oku kuquka onke amagqabantshintshi afunyenweyo kwingxelo eyilwayo ye-EIA. Oku kungeniswa kwi-PASA ukuze iqwalaselwe kwaye iphononongwe.

Isindululo se-PASA: Emva kophononongo lwayo, iPASA iya kubonelela ngengcebiso kwiSebe leMithombo yeziMbiwa naMandla (DMRE) malunga nokuba linike okanye liyala uGunyaziso lokuSingqongileyo.

### UGUNYAZISO LOKUSINGQONGILEYO

Oku kufunyanwa kwi-DMRE kwaye, ukuba kunikwe, kuya kuvumela i-Main Street ukuba siqhubele phambili nophando lwazo.

ISIBHENO: Emva kokuba iSebe likhuphe isigqibo salo, onke amaQela anoMdla naChaphazelekayo (I&APs) abhaliswe kuvimba weenkukacha ze-project aya kwaziswa ngesiphumo sesicelo kunye nezizathu zesigqibo kwiintsuku ezili-14 zomhla wesigqibo.

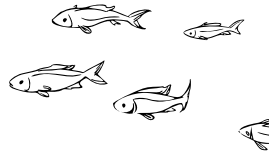
Ukuba kukho nabani na ongavumelaniyo nesigqibo esenziwe liSebe, isibheni esichasene nesigqibo singangeniswa kwiSebe lezokuLoba namaHlathi nokusiNgqongileyo (DFFE) phakathi kweentsuku ezingama-20 ukususela kumhla isigqibo esaziswa ngawo kwii-I&APs.





# AMAFUTHE NEMIPHUMELA YOKUHLOLWA I-OIL NE-GAS

## IMPEMBELELO KWIINTLANZI KUNYE NEZILWANYANA



### ZASELWANDLE

Ukuhlola i-oil ne-gas kunokuphazamisa ubomi baselwandle kuquka iintlanzi, ii-cetaceans ezifana neminenga kunye namahlengesi neentaka zolwandle, ezichaphazela iindawo zokuzala ezisele zimisiwe. Lo mmandla uyinxalenye yendlela yokufuduka kwezilwanyana ezifana ne-tuna, ii-bhillfish, ookrebe kunye neminenga. Ezinye izilwanyana ezidlula kulo mmandla yiminenga eyi- long-finned pilot, i-common dolphin, i-sperm whales, iminenga ene-humpback kunye ne-Southern right whales. Le ndawo ikwalikhaya leentaka ezithile neziqithi ezizalela kuzo.

### IMPEMBELELO KWIINDLELA ZOKUZIPHILISA

Lo mmandla unamanqanaba aphezulu entswela-ngqesho kunye nentlupheko. Imisebenzi engundoqo yoqoqosho lonxweme kummandla kukuloba, ukhenketho, ukuthuthwa kweenqanawa zemithwalo. Ukuloba, kubandakanywa abalobi abarhwebayo, abakhasayo kunye nokuzonwabisa kubonelela ngemisebenzi, iindlela zokuziphilisa kunye nokubonelela ngokutya kuluntu lwaloo ngingqi. Njengenxalenye ye-Garden Route, lo mmandla uyindawo ethandwayo yabakhenkethi basekhaya nabamazwe ngamazwe, kuquka neenqanawa zokuhamba abakhenkethi. Ngenxa yendawo ezikuyo ezingundoqo, amawaka eenqanawa zemithwalo zimisa kumazibuko alo mmandla ukuze zizaliswe, zilungiswe kwaye zigcinwe zisemgangathweni. Le misebenzi ibonelela ngamathuba abalulekileyo kuluntu lwengingqi kumacandelo amaninzi kulo mmandla. Imisebenzi yovavanyo ingaba neempembelelo ezithe ngqo kula macandelo ukuba izilwanyana zaselwandle kunye nemisebenzi ziyaphazamiseka.

Imisebenzi yovavanyo ayifane ibangele ukwanda kwamathuba engqesho kubantu basekuhlaleni kufutshane nesiza seprojekthi. Ngelixa lo msebenzi udiyanyiswe nemisebenzi ye-oyile negesi yexesha elizayo, esi sigaba sangoku seprojekthi sisexesha elifutshane kwaye siya kudala.

### INGXOLO KUNYE NONGCOLISEKO LWAMANZI

Iinqanawa zovavanyo zinokubangela ingxolo engaphantsi kwamanzi enokuthi ichaphazele okwethutyana ubomi baselwandle. Le project iza kuba nesiseko solungiselelo lonxweme kwiZibuko laseKapa, e-Mossel Bay okanye eGqeberha, okunokuthi kubangele ukugcwala komthamo wamaphenyane. Ummandla ekukho umdla kuwo ngokwawo unokuba yindawo yengxolo eyongezelelweyo kunye nongcoliseko lwamanzi. Imisebenzi iya kubandakanya ukukhutshelwa kunye nokulahlwa kolwelo olufana namanzi angwevu, amanzi acociweyo amdaka kunye namanzi enjini anokuba nefuthe elibi kwimekobume yengingqi.

### INGQWALASELA ZOKUTSHINTSHA KWEMOZULU

Imisebenzi yovavanyo ecetywayo inokuchaphazela umgangatho womoya wendawo ngokuhamba kweenqanawa kunye nezikhophe, ezikhupha ii-gas ezibamba ukutshisa emoyeni, ezifana ne-sulphur oxide, i-nitrogen oxide, i-carbon dioxide kunye ne-carbon monoxide.

Ezinye ii-gas ezibamba ukutshisa emoyeni nazo zinokuba negalelo kubushushu behlabathi nakwimiphumo yokutshintsha kwemozulu yehlabathi.



## IIMPEBELELO KWINKCUBEKO KUNYE NELIFA LEMVELI

Kuso nasiphi na isiza esiselunxwemeni apho abantu basebenzisa ulwandle, kukho imfuneko yokuba kuthathelwe ingqalelo ilifa lenkcubeko eliphathekayo nelingaphathekiyo njengoko ezi ndawo zinokubandakanya iindawo ezibalulekileyo ngokwasemoyeni kuluntu lwasekuhlaleni. Amanzi aqatshelwe ngamalungu oluntu adibene nawo kwindawo yeprojekthi achaza le mimandla njengamanzi 'aphilayo'. La manzi aphilayo kukholelwa ukuba adlala indima ebalulekileyo kulawulo lomoya kunye nempilo kumaqela emveli ngokukodwa.



Iziphumo eziphambili kuphononongo olwenzelwe iBlock 11B/12B yeLungelo leMveliso ye-EIA ngo-2023 zezi zilandelayo:

- 1). Kukho unxibelelwano olukhulu phakathi komhlaba nolwandle kunxweme olusemazantsi koloni;
- 2). Kukho iinkcubeko zehlabathi ezibonakala kubomi babalobi abakhasayo neentsapho zabo;
- 3). Ukuguquguquka nokongamela kobuhlanga kuluntu oluselunxwemeni loMzantsi Koloni lwenza kube nzima kuluntu lwasekuhlaleni ukufikelela elwandle nezinye iindawo zenkcubeko ezinxulumeneyo, nangona umthetho wocalucalulo ungasekho.

Imisebenzi yovavanyo, efana naleyo ikwi-Block 9 kunye ne-11B/12B inokuba neempembelelo ezibalulekileyo kwilifa lemveli, uluntu kunye nentlalontle yoluntu, ingakumbi kuluntu olunxwemeni kummandla.

## OKO UNOKUCINGA NGAKO

**Ii-project zovavanyo zinokuba neziphumo ezithe ngqo nezingathanga ngqo kuluntu. Kubalulekile ukucinga malunga nendlela le project eya kuba nefuthe ngayo kuwe nakuluntu lwakho. Cinga ngale nto:**

- Ingaba le project iza kuyichaphazela njani impilo yam?
- Ingaba ndiza kukwazi ukufikelela elunxwemeni naselwandle njengoko bendinako ngaphambili?
- Ingaba umsebenzi we-project uza kuchaphazela indlela ezihamba ngayo iintlanzi kunye neentaka kule ndawo, kwaye ingaba oku kuya kuba nefuthe kuluntu lwethu olulobayo?
- Ingaba ndidla ngokuloba okanye ndihambahambe kwindawo ye-project?
- Utshintsho ekuhambeni kweezintlanzi lube naliphi ifuthe kuluntu lwethu olulobayo?
- Ingaba le project iza kubonelela ngamathuba engqesho kubantu basekuhlaleni?
- Ingaba le project iza kuba nefuthe njani kwiinkqubo zam zenkcubeko nezomoya?
- Ingaba ookhokho bam okanye iindawo zelifa lemveli ziyachatshazelwa yi project?



# UKUZIBANDAKANYA

## Kutheni kufuneka ndibandakanyeke?

I-project ecetywayo kunye nemisebenzi yovavanyo iyaluchaphazela uluntu olugudle unxweme olusemazantsi, ichaphazela abo baxhomekeke elwandle ngempilo yabo. Igalelo lakho libaluleke kakhulu ukuqinisekisa ukuba i-project iqwalasela iimfuno kunye neenkxalabo zabo bonke abo banokuchaphazeleka.

**\*Khumbula! Nokuba awuhlali kufutshane nommandla womdla ekuzakwenziwa kuyo le project, nabani na unokubandakanyeka.**

## Indlela yokubandakanyeka



### Qokelela ulwazi

Funda iNgxelo esiSiseko ye-Scoping kunye namanye amaxwebhu e-project afumaneka kwi-website ye-SLR: <https://www.slrconsulting.com/public-documents/11b12bsurveys/>

OKANYE

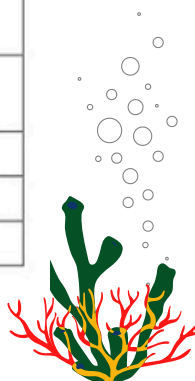
ndwendwela i-website yasimahla ye-daa: <https://slrpublicdocs.datafree.co/public-documents/11b12bsurveys/>

OKANYE

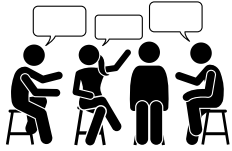
Unokuqokelela isishwankathelo esingesosezobugcisa esifumaneka ngesiNgesi, isiBhulu nesiXhosa njengoxwebhu olushicilelweyo okanye umqulu wesandi esimanyelwayo kwezi ndawo zilandelayo:

| Location   | Name of Facility                        | Physical Address  |
|--|---|---|
| <b>Full Report and Non-Technical Summary are available at:</b> |   |   |
| Mossel Bay   | Kwanonqaba Library                      | Adriaan Street, Asla Park, Kwanonqaba                                     |
| Knysna   | Knysna Tourism Offices                  | 40 Main Road, Knysna Central  |
| Plettenberg Bay  | Plettenberg Bay Public Library          | Shop 29, Mervills Shopping Centre, Sewell Street                          |
| St. Francis Bay  | St. Francis Tourism & Municipal Offices | Municipal Offices   |
| <b>Non-Technical Summary is available at:</b>                  |   |   |
| Stilbaai   | Still Bay Library                       | Main Road, Still Bay  |
| Mossel Bay   | Mossel Bay Library                      | 4th Floor Montagu Building , 99 Marsh St, Mossel Bay Central              |
| Mossel Bay   | Transnet Port of Mossel Bay             | 55 Bland Street, Mossel Bay, Main Port Administration Building, 2nd Floor |
| George   | George Public Library                   | 4 Caledon St, Campher's Drift   |
| Jeffreys Bay   | Jeffreys Bay Public Library             | 43 Diaz Rd  |
| Gqeberha   | Newtown Park Library                    | Hurd Street, Newtown Park   |

Umthombo: Draft Scoping Report, 3 March 2025







## Ukuzimasa iNxaxheba kaWonke-wonke yoBuntu ngeeNtsuku eziVulelekileyo kunye neeNtlanganiso

Itafile engezantsi yi-schedule yazo zonke iiNtsuku neentlanganiso zoThatho-nxaxheba zoluntu. Jonga iinkcukacha zentlanganiso yakho yasekuhlaleni.

### Bhalisa ukuThatha inxaxheba

Ubhaliso lokuzimasa iiNtsuku eziVulelekileyo zoThatho-nxaxheba loLuntu luyafuneka.

Sebenzisa eli khonkco: (<https://forms.office.com/e/ECpD2ZLTU2>) ukugcwalisa uxwebhu olufunekayo ukuze ubhalisele ukuya kuzo naziphi na iintlanganiso zikawonke-wonke ezidwelisiweyo apha ngezantsi.

| Indawo                  | Iholo yendawo               | Umhla kunye nexesha                 |
|-------------------------|-----------------------------|-------------------------------------|
| 1. Mossel Bay           | D'Almeida Community Hall    | <b>10 March 2025</b><br>15:00-19:00 |
| 2. George               | Conville Community Hall     | <b>11 March 2025</b><br>15:00-19:00 |
| 3. Knysna               | Hornlee Community Hall      | <b>12 March 2025</b><br>15:00-19:00 |
| 4. Plettenberg Bay      | New Horizons Community Hall | <b>13 March 2025</b><br>15:00-19:00 |
| 5. Storms River Village | Tsitsikamma Village Inn     | <b>14 March 2025</b><br>15:00-19:00 |
| 6. Kareedouw            | Kagiso Heights Hall         | <b>15 March 2025</b><br>10:00-13:00 |
| 7. Jeffreys Bay         | Pellsrus Community Hall     | <b>17 March 2025</b><br>15:00-19:00 |
| 8. St Francis Bay       | Sea Vista Community Hall    | <b>18 March 2025</b><br>15:00-19:00 |

*Umthombo: Draft Scoping Report, 3 March 2025*





## Ukuzimasa iiNtlanganiso zoLuntu eziBalulekileyo ngobuxhakaxhaka bonxibelelwano

Intlanganiso kawonke-wonke ngobuxhakaxhaka bonxibelelwano, ngeqonga le-internet (MS TEAMS), iya kuqhutywa **ngowe-20 kweyoKwindla 2025, 09h00-12h00.**

Ukubhalisa ukuzimasa intlanganiso ye-internet kunye neenkukacha ezithe vetshe, tyelela eli khonkco uze ugcwalise uxwebhu:

<https://forms.office.com/pages/responsepage.aspx?id=U-ycEHeo60KT6Ln1woK6OF-xy3CxpV1Ptm9CfE0o141UQktKUjM0QzRNRFdUTIY1U1JKM1pMQ!gyQS4uturltur>

[xy3CxpV1Ptm9CfE0o141UQktKUjM0QzRNRFdUTIY1U1JKM1pMQ!gyQS4uturltur](https://forms.office.com/pages/responsepage.aspx?id=U-ycEHeo60KT6Ln1woK6OF-xy3CxpV1Ptm9CfE0o141UQktKUjM0QzRNRFdUTIY1U1JKM1pMQ!gyQS4uturltur)

### \*Nceda qaphela! Ngabantu ababhalisela intlanganiso ye-internet kuphela abaza kufumana ikhonkco lokuya entlanganisweni.

Bhalisa njenge Qela Elinomdla nelichaphazelekayo ukuze ufumane ulwazi malunga ne-project.



**Email:** [11b12bsurveys@slrconsulting.com](mailto:11b12bsurveys@slrconsulting.com) okanye



**SMS/WhatsApp:** 071 586 5881 or



**Umnxeba:** 021 461 1118/9

Ngenisa amagqabaza akho: Lungiselela kwaye ungenise izimvo zakho **nge-3 kuTshazimpunzi 2025.** Izimvo zingangeniswa nge-email, iSMS, WhatsApp okanye ngeposi kusetyenziswa:



**Email:** [11b12bsurveys@slrconsulting.com](mailto:11b12bsurveys@slrconsulting.com)



**Telephone:** (021) 461 1118/9



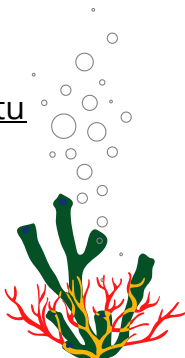
**SMS/WhatsApp:** 071 586 5881



**Post:** Project Team SLR Consulting  
5th Floor, Grove Exchange  
Claremont  
Cape Town  
7700

• Ukufakwa kwezimvo ezibhaliweyo kufuneka kubandakanye igama lakho, iinkukacha zoqhagamshelwano, kunye nayo nayiphi na intlangano/umbutho/uluntu okanye umdla kwi-project.

• Yakuba ingenisiwe, jonga ingxelo kwizimvo zakho. Zonke izimvo ezifunyenweyo kufuneka zibandakanywe kwaye ziphendulwe kwiNgxelo yeziMvo kunye neeMpendulo, eya kuthi yongezelelwe kwiNgxelo ye-Scoping yokugqibela.



# INDLELA YOKULUNGISA IZIMVO ZAKHO

Akukho zi-templates okanye iimfuno zendlela ofuna ukucwangcisa ngayo izimvo zakho. Apha ngezantsi kukho umzekelo wendlela onokwenza ngayo uluvo lwakho.

## 1. Ungubani?

- Kutheni le nto i-project ibalulekile/ifanelekile kuwe?
- Umele bani?

## 2. Zeziphi iziphene kwiNgxelo ye-Scoping esisiseko?

- Yintoni engacacanga okanye engekho?
- Yintoni efuna uphando olongezelelekileyo?

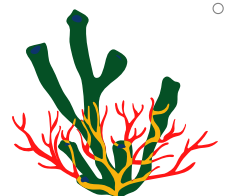
## 3. Yahlula inkxalabo yakho

- Inqaku elinye kumhlathi
- Nika isihloko kumhlathi ngamnye
- Beka eyona ngxoxo inamandla / eyona nto iphambili kuqala

## 4. Cacisa uze uphephe ukuthetha ngokubanzi

- Sebenzisa izibakala kangangoko unako
- Jonga imithombo oyisebenzisayo
- limvakalelo zilungile

## 5. Qukumbela ngokuthetha into oyifunayo



**Jonga umzekelo ongezantsi:**

## **EXAMPLE SUBMISSION**

**Submitted by:** Mossel Bay Voorbeeld Community  
**Represented by:** Ms. Eggy van Beispiel (Community Leader)  
**Address:** 12 Trompies Road, Mossel Bay, 6506  
**Date:** 1 April 2025

**To: SLR Consulting (South Africa) Proprietary Limited**  
 5th Floor, Grove Exchange  
 Claremont  
 Cape Town  
 7700

### **SUBMISSION ON PROPOSED SURVEY ACTIVITIES IN BLOCKS 9 AND 11B/12B, SOUTH AFRICA, DRAFT SCOPING REPORT COMPLIED BY SLR**

#### **Introduction**

We, the Mossel Bay Voorbeeld Community are a historically and culturally significant group that has relied on the ocean for generations in the Outeniqua area. Our community, comprising approximately 500 families, depends on fishing for livelihoods, cultural practices, and spiritual connection to the sea. The ocean is not just a resource for us, it is central to our identity, heritage, and way of life. We are deeply concerned about the proposed seismic surveys in Blocks 9 and 11B/12B and their potential impacts on our community.

#### **General Comments**

We strongly oppose the proposed survey activities without further, meaningful consultation with our community. The potential impacts on our livelihoods, heritage, spirituality, and marine life are too great to ignore. We call for a thorough assessment of these impacts and the development of clear mitigation measures before any activities proceed. Our community must be included in decision-making processes to ensure that our rights and traditions are respected.

#### **Main Concerns**

Our primary concerns with the project include the potential disruption of marine life, which could severely impact fish populations and, in turn, our livelihoods. During the public consultations, these concerns were not adequately addressed. We were not provided with clear, actionable plans to mitigate the impacts on marine ecosystems or our fishing activities.

#### **Impact on Livelihood and Community**

Fishing is the backbone of our community. If fish populations are disturbed or displaced by seismic surveys, our ability to catch fish will be directly affected. This will lead to economic hardship for our families, many of whom already struggle to make ends meet. The project threatens not only our income but also our food security, as many of us rely on fish as a primary source of nutrition.

#### **Access to the Beach and Ocean**

We are concerned that the project may restrict our access to the beach and ocean, either directly or indirectly. If marine life is disturbed, traditional fishing spots may become unproductive, forcing us to travel further or abandon fishing altogether. This would disrupt our daily lives and cultural practices.

#### **Impact on Fish and Bird Species**

The movement of fish and bird species is likely to be affected by the seismic surveys. Fish may migrate away from the noise, and birds that rely on fish for food may also be impacted. This will directly affect our fisherfolk, who depend on these species for their catch. The long-term consequences for marine biodiversity are also a significant concern.

#### **Benefits to the Community**

We do not see clear benefits for our community from this project. While there may be economic benefits at a national level, these are unlikely to trickle down to us. Instead, we fear that the project will harm our livelihoods and cultural practices without providing meaningful compensation or alternatives.

#### **Negative Impacts Discussed**

The negative impacts of the project were briefly mentioned during the public consultations, but no detailed mitigation plans were shared. We were not adequately informed about how the project would address issues such as noise pollution, marine life disruption, or the potential long-term damage to our fishing grounds.

#### **Impact on Cultural and Spiritual Practices**

The negative impacts of the project were briefly mentioned during the public consultations, but no detailed mitigation plans were shared. We were not adequately informed about how the project would address issues such as noise pollution, marine life disruption, or the potential long-term damage to our fishing grounds.

#### **Conclusion**

In conclusion, we do not approve of the proposed survey activities in Blocks 9 and 11B/12B. The potential harm to our livelihoods, cultural practices, and marine ecosystems far outweighs any perceived benefits. We urge Main Street and the relevant authorities to engage in further consultations with our community and to prioritize the protection of our heritage and wellbeing.

**Signed,**

**Signed Here**

Ms. Eggy van Beispiel

Community Leader, Mossel Bay Voorbeeld Community  
 Contact: 082 123 0000 | [eg.beispiel@gamil.com](mailto:eg.beispiel@gamil.com)

**Date**

1 April 2025

