

TEEPSA



Deep Western Orange Basin South

WHAT ACTION CAN I TAKE?

COMMENT ON THE SCOPING REPORT

Comment Deadline: 19 February 2025

Area of Interest

TEEPSA's exploration in the southern area of the block covers 15 000 km² and is approximately 211km from the coastal town of Saldanha.

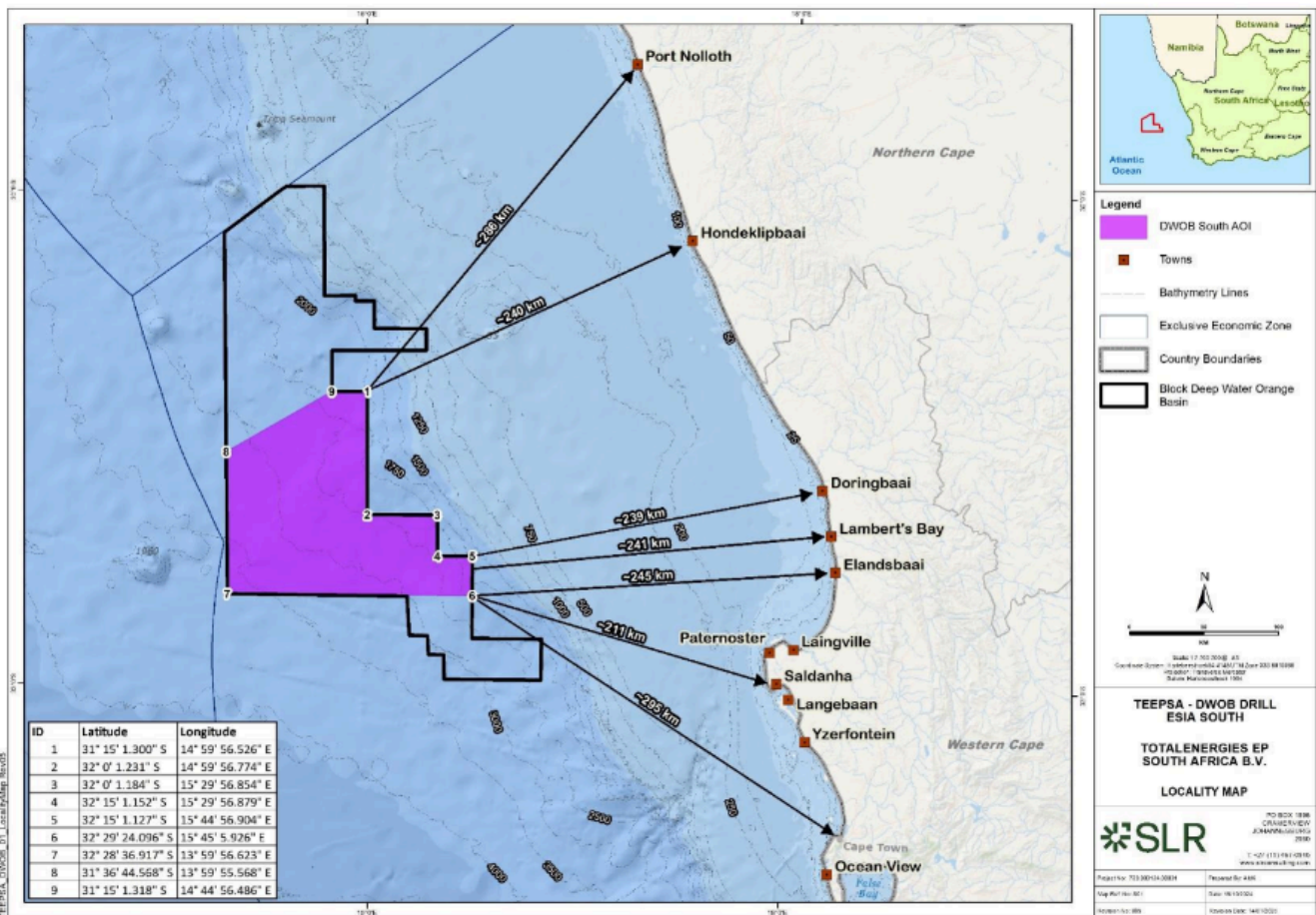


Figure 1-1: Locality Map of Licence Block DWOB and the Area of Interest, page 2 of the draft Scoping Report.

This pamphlet was developed by Natural Justice in February 2025

TABLE OF CONTENTS

- Introduction
- Timeline of Events
- Project Activities
- Potential Impacts
- How to get involved
- Guidelines when submitting a comment

TotalEnergies EP SA S.A.S (TEEPSA) Exploration Drilling in Block Deep Water Orange Basin (DWOB)

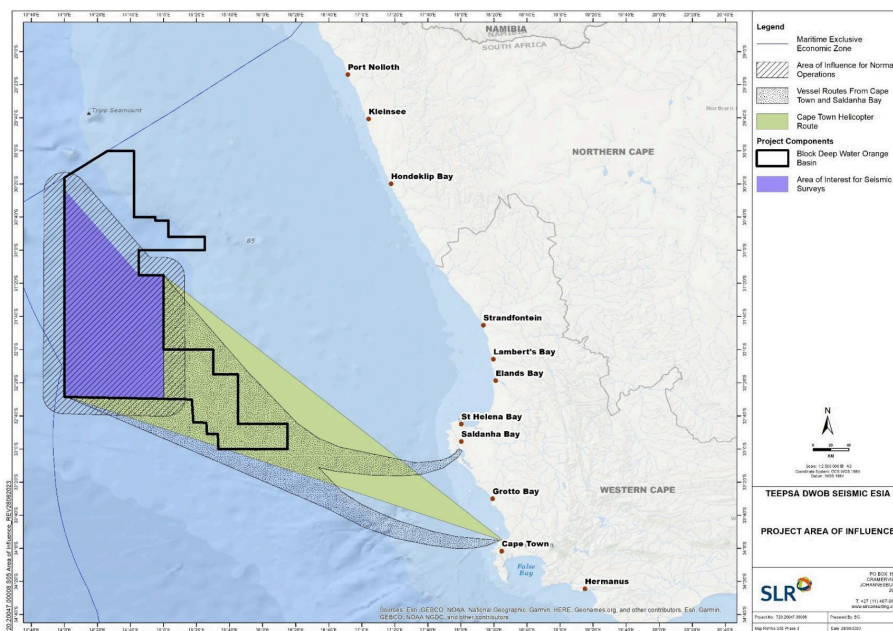
Exploration Right Number 12/3/343

Introduction

In 2023, TEEPSA received authorisation to undertake various exploration activities within block DWOB, including exploration well drilling in an area of interest in the northern part of the licence block DWOB, between Port Nolloth and Hondeklipbaai.

TEEPSA is now proposing to conduct additional exploration drilling, within an area located in the southern part of the block, between Saldanha and Hondeklipbaai. However, before starting with their proposed activities, TEEPSA must conduct an Environmental Impact Assessment (EIA), sometimes called an Environmental and Social Impact Assessment (ESIA). The EIA consists of two phases: the Scoping Phase and the Impact Assessment Phase. We are currently at the Scoping Phase.

SLR Consulting has been appointed as the Environmental Assessment Practitioner (EAP) to create the Scoping report.



Timeline of events

THE RIGHT

EXPLORATION RIGHT:

This is obtained from the Petroleum Agency of South Africa (PASA) to undertake activities to explore for oil and gas.

THE ENVIRONMENTAL IMPACT ASSESSMENT PROCESS

SCOPING PHASE: This phase aims to set out what needs to be assessed in the Environmental Impact Assessment (EIA), how to approach the assessment and what information may be needed to identify the likely impacts of the activity. This information is placed in a draft Scoping report.

PUBLIC COMMENTS: The public is provided with an opportunity to comment on the draft Scoping report.

WE ARE HERE

FINAL SCOPING REPORT PUBLISHED This incorporates all comments received on the draft Scoping Report. This is submitted to DMRE for consideration and review.

WHAT NEXT?

After the Department issues its decision, all Interested and Affected Parties (I&APs) registered on the project database will be notified of the outcome and the reasons for the decision within 14 days of the date of the decision.

If the Department accepts the Scoping Report the project will move on to the EIA Phase.

EIA PHASE

Specialist studies: the EAP will undertake an ESIA and specialist studies.

Public comments: I&APs will have another opportunity to comment on the draft ESIA report.

Final EIA report published: This incorporates all comments received on the draft ESIA Report. This is submitted to the PASA for consideration and review.

PASA recommendation: After its review, PASA will provide a recommendation to the Department of Mineral Resources and Energy on whether to grant or refuse Environmental Authorisation.

ENVIRONMENTAL AUTHORISATION

This is obtained from the Department of Mineral Resources and Energy and, if given, will allow TEEPSA to go ahead with their exploration.

APPEAL: After the Department issues its decision, all Interested and Affected Parties (I&APs) registered on the project database will be notified of the outcome of the application and the reasons for the decision within 14 days of the date of the decision.

If anyone disagrees with the decision made by the Department, an appeal against the decision may be submitted to the Department of Forestry Fisheries and Environment within 20 days from the date the decision was communicated to I&APs.



PROJECT ACTIVITIES



**This is a summary of the main activities that appear in the Draft Scoping Report but does not include all possible activities.*

Drilling Activities

TEEPSA proposes to drill up to 7 exploration and/or appraisal wells. Drilling and associated activities for each well is estimated to take 3 to 4 months. These drilling activities are divided into three phases:

Mobilisation Phase

This phase will involve the establishment of an onshore logistics base, the appointment of specialised international and local service providers and staff, the importation and transportation of drilling equipment and bulk materials, and the transit of the drilling unit and supply vessels to the drill site.

Operation Phase

This phase will signal the start of the use of the drilling unit and supply vessels. This will involve well drilling (including Remote Operating Vehicle operation; installation of conductor pipes, wellheads, Blow-Out Preventer, etc.), and the discharge of cuttings, drilling fluid and residual cement onto the seabed. This phase will include Vertical Seismic Profiling (VSP) which is an evaluation tool that is used to generate detailed seismic images of the geology around the well using airgun arrays.

Demobilisation Phase

This phase will see the plugging of the wells with cement and the abandonment of the wells if they pass the necessary integrity testing and seabed clearance survey. The demobilisation includes the demobilising of the drilling unit and support vessels, as well as the logistics base, services and work force.

Drilling Unit

Various types of drilling technologies can be used to drill an exploration well depending on the water depth and marine conditions experienced at the well site. The operator is proposing to use a Deepwater Mobile Offshore Drilling Unit (MODU) in the form of either a drillship or semi-submersible drilling unit to undertake the proposed exploration activities.

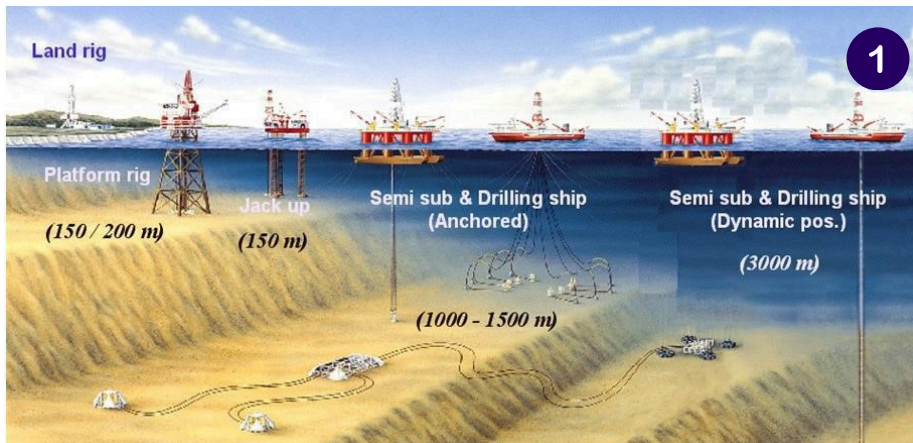
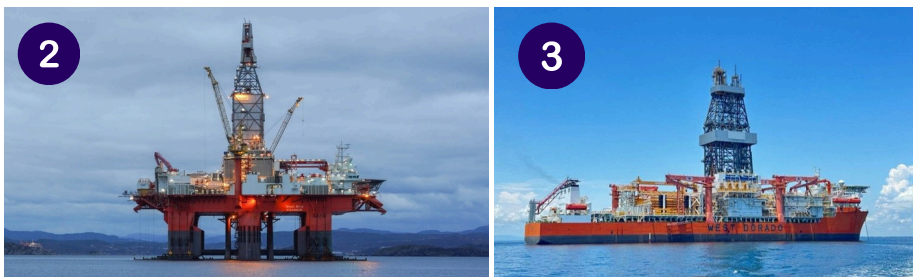


Figure 1: Types of Drilling Units, page 115 of the draft Scoping Report

Figure 2: Image: Example of a semi-submersible Drilling Unit sourced from Offshore-Energy.biz: <https://www.offshore-energy.biz/more-work-with-totalenergies-in-africa-for-semi-submersible-rig/>

Figure 3: Image: Example of a Drillship sourced from Offshore-Energy.biz: <https://www.offshore-energy.biz/drillship-reaches-its-destination-to-await-its-inaugural-drilling-assignment/>



Support Vessels

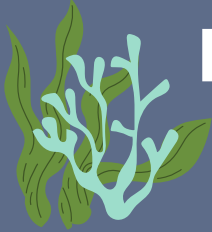
The drilling unit will be supported/ serviced by up to three support vessels operating two to three rotations per week, to facilitate the transportation of goods, equipment, tools and waste between the drilling unit and the onshore logistics base. A support vessel will always be on standby near the drilling unit to provide support for firefighting, oil containment/ recovery, rescue in the unlikely event of an emergency and supply any additional equipment that may be required. Support vessels can also be used for medical evacuations or transfer of crew if needed.

Helicopters

Transportation of personnel to and from the drilling unit by helicopter is the preferred method of transfer. It is estimated that there could be up to four trips per week between the drilling unit and the helicopter support base in Cape Town.

On-Shore Logistics Base

The project will use an onshore logistics base at the existing ports of Cape Town, Saldanha Bay or Luderitz for storage of materials and loading and offloading of support vessels.



POTENTIAL IMPACTS



** These impacts have been highlighted in the Draft Scoping Report. This is a summary and therefore not all the impacts are described.*

Impacts on Fish and Marine Life

The pelagic fish most likely to be encountered in the offshore waters of Block DWOB are large migratory species, including various tunas, billfish and sharks. Long-finned pilot whales, common dolphins, sperm whales and humpback whales can also be found in the project area at certain times, as many whales migrate from the West Coast to Antarctica or the Subantarctic. **Drilling activities will change the environment at the drill site and affect species living on the seafloor and who move through the project area.** The changes in the environment include a possible change in seawater quality and an increase in noise. This could result in fish species moving to areas outside of the drilling area and/or being injured. **In the event of an oil spill**, pollutants that are harmful to marine ecosystems may be released into the sea and could contaminate fishing areas. The damage would impact offshore and coastal environments, affecting water quality, animal health and potentially lead to animal deaths.

Impacts on Livelihoods

Fishing activity overlaps with the eastern section of the Area of Interest for the proposed exploration drilling. Over the period 2017 to 2019, a yearly average of 149 fishing lines were placed within DWOB (the project area) yielding 191 tonnes of large pelagic species such as tuna and swordfish. The proposed project may have **impacts on fishing activities** due to changes in fish behaviour, leading to a reduction in the amount of fish caught and a potential increase in the amount of time spent fishing. **In the event of an oil spill**, there is potential for fisheries to be excluded from polluted areas and species being displaced from normal feeding/fishing areas, which could result in less fish being caught. If the total catch is reduced, this could reduce fishing income.

Impacts on Culture and Heritage

The coastline considered part of the area of indirect influence for the DWOB Licence Block is from Port Nolloth down the West Coast of the Western Cape Province to Cape Town. **This area has a rich intangible cultural heritage.** Interviews and studies conducted along the West Coast noted that First Peoples, Small Scale Fishers (SSF) and SSF families displayed high regard for the sea, as well as their spiritual and cultural connection with the ocean and the reliance on these coastlines for subsistence. For these communities, the whole ocean forms part of a cultural complex in which ancestral permission/blessing must be obtained for any development to take place. In this regard, people consider the whole ocean to be highly sensitive regardless of industrial or other activities happening inshore. The impact on cultural and spiritual beliefs of both South Africa's coastal fishing communities and its Indigenous peoples related to the sea will be investigated further in the Cultural Heritage Impact Assessment.

GET INVOLVED



Why should I get involved?

The proposed activity may affect communities living near the project area and communities relying on the ocean. Therefore, sharing your views on the proposed activity is important. However, even if you do not live close to the area of interest, you can get involved.

How to get involved

- Gather as much information about the project. All project documents can be accessed online [HERE](#) or physically at the following locations:

Location	Name of Facility	Physical Address
Full Report and Non-Technical Summary are available at:		
Port Nolloth	Port Nolloth Public Library	Harbour Street, Port Nolloth
Lamberts Bay	Lamberts Bay Public Library	44 Church Street, Lamberts Bay
Saldanha Bay	Saldanha Public Library	Municipal Building, Berg Street, Saldanha
Hout Bay	Hout Bay Public Library	Melkhout Crescent, Hout Bay, Cape Town
Non-Technical Summary is available at:		
Alexander Bay	Alexander Bay Public Library	Oranjeweg, Alexander Bay
Port Nolloth	Port Nolloth Public Library	Harbour Street, Port Nolloth
Hondeklip Bay	Kamiesberg Municipality	83 Dolphin Street, Hondeklipbaai
Vredendal	Vredendal Public Library	37 Church Street, Vredendal
Lamberts Bay	Lamberts Bay Public Library	44 Church Street, Lamberts Bay
Elands Bay	Elands Bay Public Library	Main Road, Elands Bay
St Helena Bay	St Helena Public Library	26 Columbine Crescent, Britannica Heights, Saint Helena Bay
Velddrif	Velddrif Public Library	Voortrekker Rd, Velddrif
Doringbaai	Doringbaai Public Library	Harbour Rd, Doringbaai
Langebaan	Langebaan Public Library	Corner Oostewal & Bree Street, Langebaan
Paternoster	Paternoster Public Library	Corner Street. Augustine's Way (in the Civic Centre building)
Yzerfontein	Yzerfontein Municipal Office	46 Main Rd, Yzerfontein

- Register as an I&AP to receive information about the project via **email: teepsa-dwobsouth@slrconsulting.com** or **Tel: (011) 467 0945** or **SMS/WhatsApp: 078 226 0801**. **If you have already registered as an I&AP for this project, you do not need to do so again.**
- Attend a public meeting.

No	Location	Venue	Date	Time
1	Port Nolloth	Luvuyo Drop-In Centre	3 February 2025	14h00-18h00
2	Hondeklipbaai	Eric Baker Community Hall	4 February 2025	14h00-18h00
3	Doringbaai	Miriam Owies Community Hall	5 February 2025	14h00-18h00
4	Lamberts Bay	Lamberts Bay WCG e-Centre	6 February 2025	14h00-18h00
5	Elands Bay	Elands Bay Community Hall	7 February 2025	14h00-18h00
6	Paternoster	Paternoster e-Centre Hall	8 February 2025	10h00-14h00
7	St Helena Bay	Laingville Community Hall	10 February 2025	14h00-18h00
8	Saldanha	White City MPC	11 February 2025	14h00-18h00
9	Langebaan	Langebaan Town Hall	12 February 2025	14h00-18h00
10	Yzerfontein	Yzerfontein Community Hall	13 February 2025	14h00-18h00
11	Hout Bay	Hangberg Sports and Recreation Centre	14 February 2025	14h00-18h00
12	Virtual	Ms Teams Platform	18 February 2025	11h00-13h00

- Submit your comment by **19 February 2025**.

Your comment can be submitted:

- a. **Via email to teepsa-dwobsouth@slrconsulting.com**
- b. **Via post to Suite1, Building D, Monte Circle, 178 Montecasino Boulevard, Fourways, Johannesburg, 2191**
- c. **Via phone to Tel: (011) 467 0945 or**
- d. **Via SMS/WhatsApp to 078 226 0801**

GUIDELINES WHEN SUBMITTING A COMMENT

WHAT SHOULD YOU BE THINKING ABOUT

Projects have direct and indirect effects on communities, and it is important to think about what these effects could be. The questions below will help you identify and think about the influence of the project on your community.

- **Livelihood:** How will this project impact my livelihood, employment or income?
- **Health:** Will the project impact my or my community's health?
- **Location:** How will the project impact my access and use of the beach and ocean? Do I normally fish in the project area or travel through the project area to access my usual fishing grounds?
- **Marine and coastal species:** Will the project activity affect how fish and bird species move in the area?
- **Benefits:** Will the project provide you or your community with employment and what kinds of skills are required to be employed? Is it long-term employment? What benefits will the project bring to my community?
- **Intangible cultural heritage:** How will this project impact your cultural and spiritual practices that is connected to the ocean?
- **Future generations:** How will this project impact our children and future generations?

HOW TO STRUCTURE YOUR COMMENT

There are no templates or requirements of how you need to structure your comment. Below is an example of how you can structure your comment.

1. Who are you?

- a. Why is the project important/relevant to you?
- b. Who are you acting on behalf of?

2. What are the flaws with the draft Basic Scoping Report?

- a. What is not clear or is missing?
- b. What requires further investigation?

3. Group your concerns

- a. One issue per paragraph
- b. Give a heading to each paragraph
- c. Put your strongest argument/main concern first

4. Be specific and avoid generalising

- a. Use facts as far as possible
- b. Reference the sources you are using
- c. Emotions are okay

5. Conclude by saying what you want

