

# INTO OMELE UYAZI:

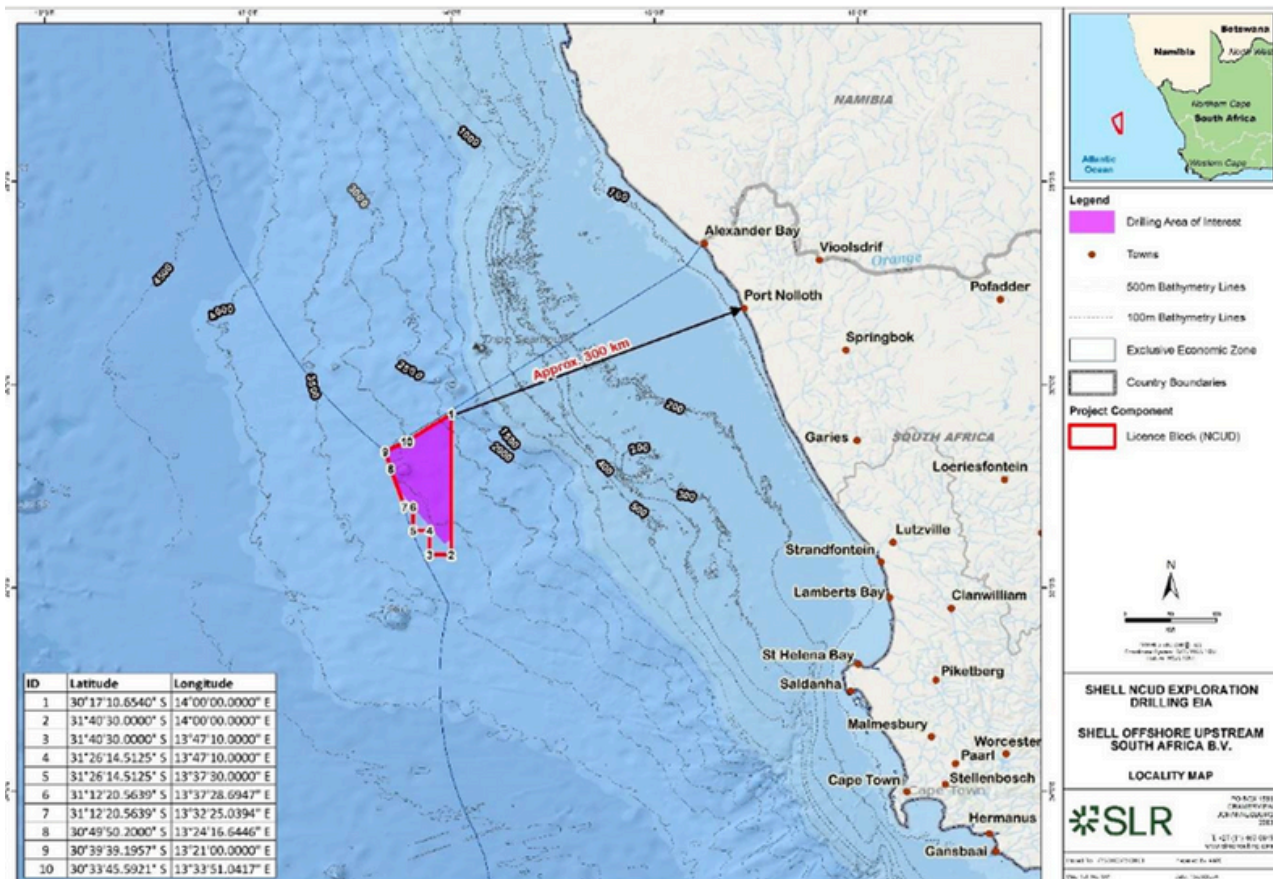
**I-Shell Offshore Upstream South Africa B.V. UCwanciso Lokuphonononga oluCetywayo kwi Block Mntla Koloni Ultra-Deep, eMzantsi Africa**

**Ingxelo yoYilo Lobume**

**EyeThupha 2024**

## Indawo yoMdlala

INDAWO YE-PROJECT ECETYWAYO INABELA MALUNGA NAMA-300 KM KUDE NONXWEME LWASE PORT NOLLOTH EMAZANTSI ECALENI KONXWEME OLUSENTSHONA UKUYA ESTRANDFONTEIN, MALUNGA NE-5,254 KM<sup>2</sup> NGOBUKHULU. LE NDAWO ISEMANZINI AMALUNGA NAMA-2,500 UKUYA KUMA-3,200 M UBUNZULU.



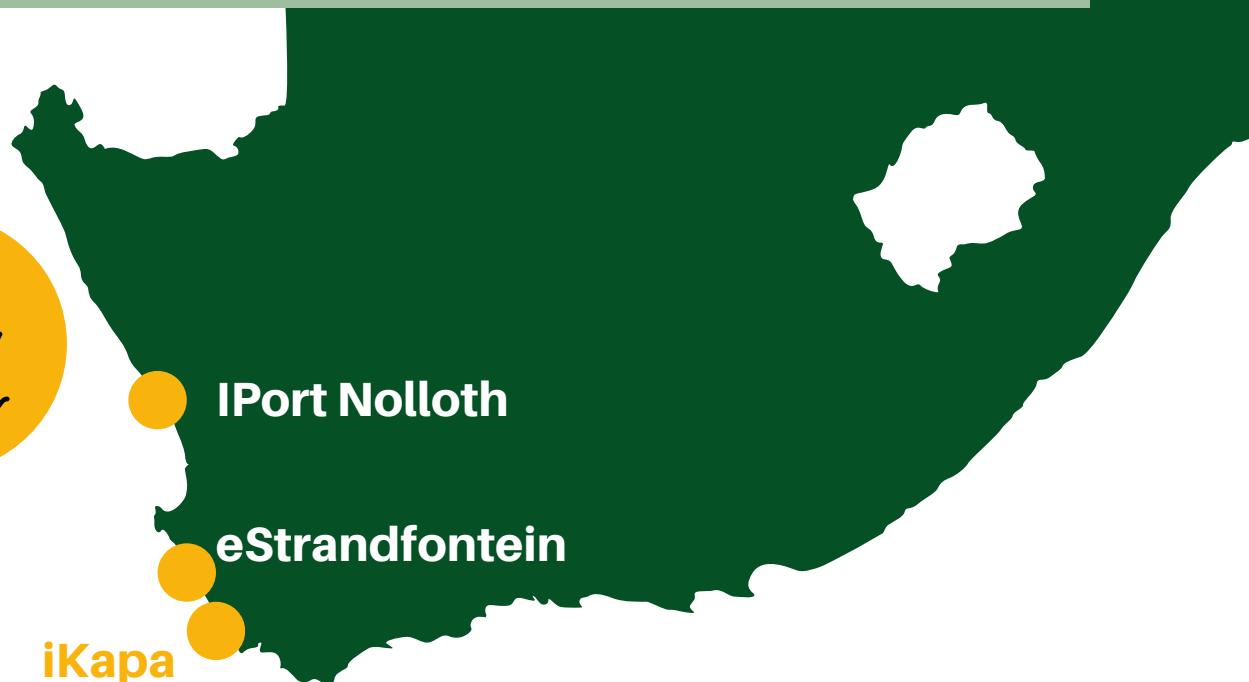
**Umfanekiso 1: I-map yendawo yePhephamvume Block NCUD kunxweme loMzantsi Afrika, ikhasi lesi-5 yeIngxelo yoYilo Lobume, yi-SLR efunyenwe apha <https://www.slrconsulting.com/afr/public-documents/shell-ncud/>.**



**I-SHELL OFFSHORE UPSTREAM SOUTH AFRICA B.V. KUNYE NAMAHLAKANI AYO ENTSEBENZISWANO EHLANGANYELWEYO NGOKU IBAMBE ILUNGELO LOKUPHONONONGA KWI BLOCK YEPHEPHAMVUME KWI BLOCK YE-NORTHERN CAPE ULTRA DEEP (NCUD) KUDE NONXWEME OLUSENTSHONA YOMZANTSI AFRIKA.**

**UKUQALISA IMISEBENZI YABO, ABAKWA-SHELL NAMAHLAKANI ABO KUFUNEKA BENZE UVAVANYO LWEMPEMBELELO YOKUSINGQONGILEYO KUNYE NENTLALO (ENVIRONMENTAL AND SOCIAL IMPACT ASSESSMENT - ESIA) KWIMISEBENZI ECWANGCISIWEYO. I-ESIA INEZIGABA EZIBINI: ISIGABA SOKUHLOLA KUNYE NESIGABA SOVAVANYO LWEMPEMBELELO. I-SLR CONSULTING NGUMSEBENZI WOVAVANYO LWENDALO (ENVIRONMENTAL ASSESSMENT PRACTITIONER - EAP) OYA KUQHUBA I-ESIA. UKUBA URHULUMENTE UNIKA UGUNYAZISO LWENDALO, IMISEBENZI YOKOMBA INOKUQALISA NGO-2026 OKANYE NGO-2027.**

**I-ESIA NGOKU IKWISIGABA SOVAVANYO. INGXELO YOYILO LOBUME IYAFUMANEKA UKUZE ULUNTU LUHLOMLE. IZIMVO MAZINGENISWE UNGADLULANGA OWE-8 KWEYETHUPHA 2024.**



**IPort Nolloth**

**eStrandfontein**

**iKapa**



# ULUHLU LWEXESHA LWEZIGANEKO

**ILUNGELO LOKUHLOLA:**

Oku kufunyenwe kwi Petroleum Agency of South Africa (PASA) ukwenza imisebenzi yokuhlola i-oil ne-gas.

**ISIGABA SOKUSEBENZA:**

Esi sigaba sijolise ekumiseleni oko kufuneka kuhlolwe kuVavanyo lweMpembelelo yokusiNgqongileyo kunye neNtlalo (ESIA), indlela yokujongana novavanyo kunye nokuba loluphi ulwazi olunokufuneka ukuchonga iimpembelelo ezinokubakho zomsebenzi. Olu lwazi lufakwe kwingxelo kwaye lusekelwe koku, iSebe leMithombo yeziMbiwa naMandla (DMRE) lithatha isigqibo sokuba liyayamkela na Ingxelo yoYilo Lobume, emva koko iSigaba sokuNika iNgxelo yeMpembelelo kokusiNgqongileyo siqhubeke.

I-SLR Consulting nguMsebenzi woVavanyo lweNdalo (EAP) kulo mzekelo, kwaye iyigqibezela Ingxelo yoYilo Lobume.

**IZIMVO ZIKARHULUMENTE:**

Urhulumente unika uluntu ithuba lokuhlomlisa kuYilo lweNgxelo yokuHlola ekhoyo APHA

**SILAPHA**

**INGXELO YOKUGQIBELA YOBUME IYAPAPASHWA:**

Oku kuquka onke amagqabantshintshi afunyenweyo kwiNgxelo yoYilo Lobume. Oku kungeniswa kwi-DMRE ukuze iqwalaselwe.

## YINTONI ELANDELAYO?

Emva kokuba i-DMRE yamkele iNgxelo yeYobume, onke amaQela anoMdlala naChaphazelekayo (Interested and Affected Parties - I&APs) abhaliswe kuvimba weenkukacha ze-project aya kwaziswa ngesiphumo nezizathu zesigqibo kwiintsuku ezili-14 zomhla wesigqibo.

Ukuba i-DMRE iyayamkela iNgxelo Yobume, isigaba sengxelo yempembelelo yokusingqongileyo siya kuqalisa, kwaye i-EAP iya kwenza uphando lweengcali kunye novavanyo lwempembelelo yokusingqongileyo nentlalo.



# IINKCAZO ZOMSEBENZI KUNYE NEZINTO EZINXULUMENE NAZO\*

\*Esi sisishwankathelo semisebenzi evela kwiNgxelo yoYilo Lobume kodwa ayiquki yonke imisebenzi enokwenzeka.

**Abakwa Shell kunye ne-JV Partners bajonge ukugrumba nokwenza uphando lwe-geophysical ukuya kutsho kwimixuma emi-5 yokuhlola nokuvavanya kwindawo echongiweyo ye-Northern Cape Ultra Deep. Ixesha eliqikelelweyo lokugrumba iqula ngalinye ziinyanga ezimbini, kukho ixesha elongezelelweyo elifunekayo lokuhlanganisa elunxwemeni, uvavanyo lomthombo, ukutywina kunye nokulahlwa. Emva kokugqitywa kwe-project, baya kutywina amaqula kwaye bashiye iintloko zamaqula phantsi kolwandle njengexalenye yenkqubo yokulahlwa.**

## UPHANDO OLWENZIWA PHAMBI KOKOMBA

Ngaphambi koKomba, banokuqhuba uphando phambi kokomba ukuvavanya iimeko ezisisiseko kunye nokuchonga iingozi ezinokubakho emazantsi olwandle kunye neengozi ezinokubakho ngaphantsi kolwandle. Uvavanyo lubandakanya i-sonar, i-sample yolwandle, kunye nesithuthi esisebenza nge-remote. Uphononongo lwe-Sonar zii-pulse zesandi ezithunyelwa kumgangatho wolwandle. I-project iqikelela ukuba olu phando luya kuthatha iiveki ezine.



## IINDLELA EZIZEZINYE ZECANDELO LOKWEMBA

Kusebenzisa amacandelo okomba engaphantsi kwamanzi okanye i-drillship ukomba amaqula, kwaye le mitshini iya kuxhotyiswa ngokufanelekileyo ukumelana nocelomngeni lokusingqongileyo kumanzi anzulu elwandle. Ziya kunyanzelisa indawo yokhuseleko eyi-500m malunga necandelo lokomba kuyo yonke i-project. Bazokusebenzisa izixhobo ezinomgangatho ophantsi we-radioactive zingasetyenziswa ekuvavanyeni iqula. Le project ilindele ukuba malunga nama-500 ukuya kwi-1,000 yee-litre zolwelo olwenziwa nge-oil olusekwe kwi-oil ezinokungena elwandle qho ngenyanga xa kusembiwa, kunye nezinye izinto ezilahlwayo, isamente, amanzi, kunye nokukhutshwa kwezicoci.



## IZIXHOBO ZENKXASO

Kusenokubakho iinqanawa ezifikelela kwisithathu ezixhasa ukusebenza ngokuhambisa izixhobo kunye nempahla phakathi kwamacandelo okomba kunye nesiseko sonxweme kunye nokubonelela ngeenkono zokulinda.



## II-HELICOPTER

Ii-helikopta ziya kuthutha abasebenzi kwaye zibonelele ngenye inkxaso evela kwisiseko esise-Alexander Bay nase-Kleinsee eMzantsi Afrika okanye e-Oranjemund eNamibia. Kuya kubakho ukujikeleziswa kwabasebenzi rhoqo ngeentsuku ezingama-28 ngenqwelo-ntaka ngexesha le-project, kunye nohambo oluqikelelwa kwi-helicopter ezintandathu ngeveki phakathi kwecandelo lokomba kunye nesiseko senkxaso.



## ISISEKO SOLUNGISELELO ELUNXWEMENI

Isiseko solungiselelo oluphambili siya kubekwa ecaleni konxweme olukwintshona yoMzantsi Afrika, ekunokwenzeka ukuba lube seSaldanha okanye eKapa, ukulungiselela imisebenzi ye-ofisi, ukugcinwa kwezixhobo, kunye nendawo yokuhlala yabasebenzi. Inkxaso yobonelelo ngobuninzi eyongezelelweyo inokuvela eMossel Bay.



# OKUNOKWENZEKA MALUNGA NEEMPEMBELELO EZICHONGIWEYO\*

\* Ezi mpembelelo ziye zaphawulwa kwiNgxelo yoYilo Lobume. Esi sisishwankathelo. Ngoko ke, asichazi zonke iimpembelelo.

## IIMPEMBELELO KWIINTLANZI KUNYE NOBOMI BASELWANDLE

Ngenxa yolwazi olulinganiselweyo olunxulumene nezilwanyana zaselwandle kwindawo ecetywayo, iNgxelo Yobume ibhekisele ikakhulu kwindawo ehlala izinto zaselwandle, nangona kunjalo, kusenokubakho iintlobo ezongezelelweyo ezinokuthi zichaphazeleke kulo mmandla. Ingxelo ichonge ukuba iintaba zolwandle kunye nemiwonyo zikwindawo ecetywayo kwaye zibalulekile ekutsaleni iintlobo ngeentlobo zezinto eziphila elwandle kunye nemihlaba yokuloba enemveliso, kwakunye noMmandla ochongiweyo o-Critically Biodiverse. Ummandla ocetywayo ukwangaphakathi kwe-Benguela Current Large Marine Ecosystem, ummandla ongundoqo wemveliso ye-plankton. Uninzi lwama-cetaceans aqhelekileyo, njengeminenga emide kunye nefutshane, iminenga ye-sperm, iminenga ye-humpback, iminenga ye-sei, iminenga ye-fin, kunye namahlengesi aqhelekileyo, kulindeleke ukuba uhambe kuwo wonke ummandla we-project ocetywayo.

Kusenokubakho ukuphazamiseka kwe-macrofauna, eyimithombo yokutya ebalulekileyo kwiintlobo zeentlanzi ezithengiswayo, ezihlala kwindawo ecetywayo yomsebenzi, kuquka i-urchins yolwandle, i-benthic shrimps, oononkala kunye nezinye iintlobo. Iintlobo ngeentlobo zeentlanzi ze-dogfish, i-catshark, i-electric ray, i-skate kunye ne-chimaera zichongiwe kwindawo ye-project, kunye neentlobo ezinkulu ezifudukayo ezifana ne-tuna, i-billfish kunye ne-pelagic sharks (i-shortfin mako, i-blue shark, i-oceanic whitetip shark kunye nezinye) zijongwa njengezisemngciphekweni okanye zisengozini.

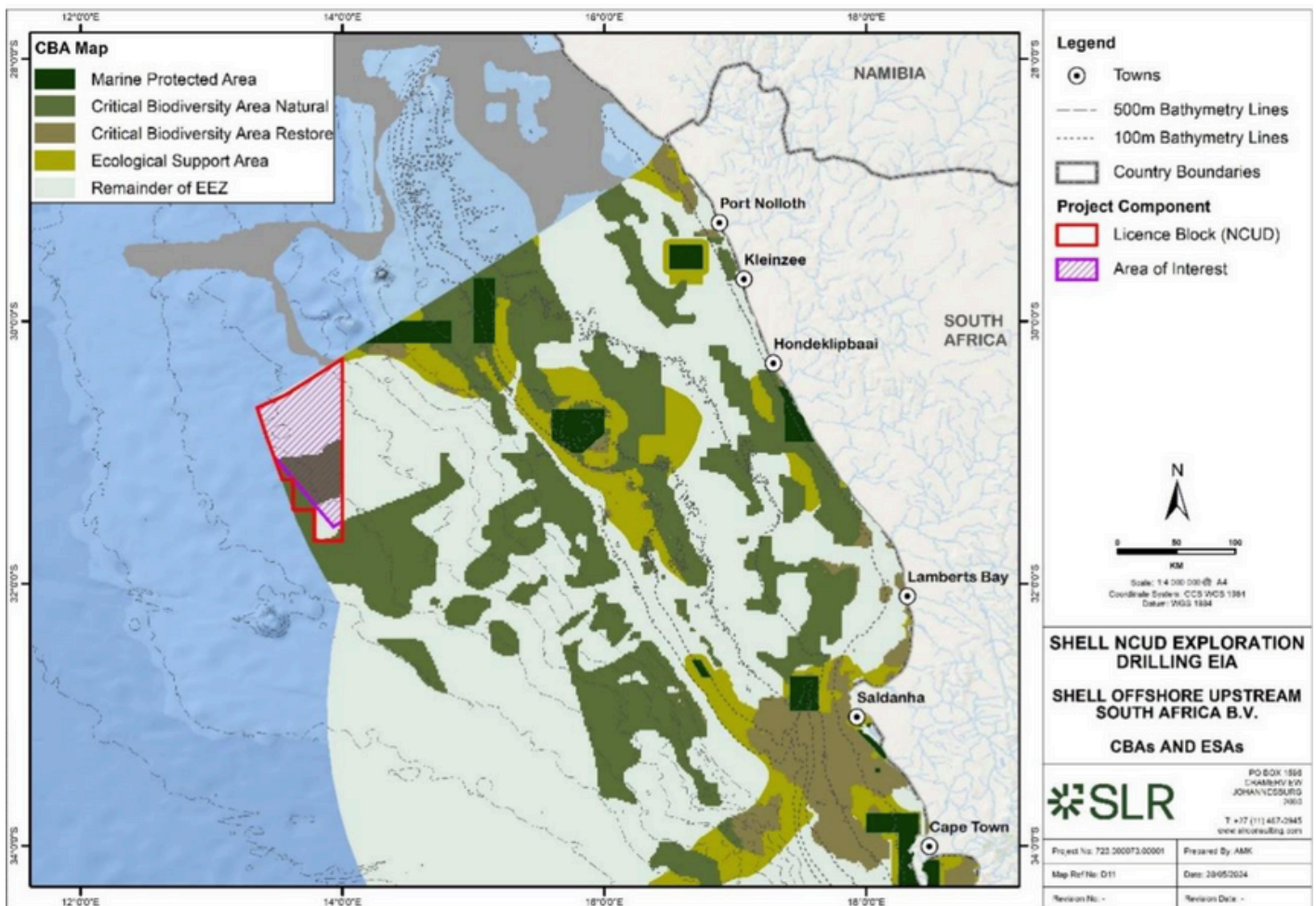
Imisebenzi yokomba, ukukhutshwa kwengxolo kunye nokukhutshelwa kuphindelelwa elwandle kunokuphazamisa ulwandle, ukuguqula iindawo zokuhlala, ukudala ingxolo phantsi kwamanzi kwaye kungenise iintlobo eziphazamisayo nezinokuphazamisa ubomi baselwandle. Ukukhutshwa kwempahla eyahlukeneyo ngexesha lokomba kunokukhokelela ekukhululweni kwempahla e-radioactive kunye nefuthe elibi kunye netyhefu kwizilwanyana. Ingxolo engaphantsi kwamanzi ebangelwa kukomba ingakhokelela kumonzakalo ngokwasemzimbeni (osisigxina okanye owethutyana), ukuphazamiseka kunye nokutshintsha kwendlela yokuziphatha. Ukuthintelwa kokuziphatha kwezilwanyana ezincancisayo zaselwandle kunokuhamba kuyo yonke inkqubo yendalo yaselwandle. Iintlanzi, izilwanyana ezizingelayo kunye nezilwanyana ezanyisayo zaselwandle azinakwenzeka ngaphandle kwe-plankton (eyenziwa zizidalwa ezincinci eziphaphatheka okanye ezidada elwandle okanye emanzini omlambo, ezibandakanya ubukhulu becala kunye namaqanda kunye nezigaba zombungu wezilwanyana ezikhulu nezithi izilwanyana ezininzi ziqhelanise nokutya kw-iplankton, ingakumbi ngokuhlaza amanzi.) Ingxelo ithi akukho sigqibo sokuba iimpembelelo ze-acoustic kunye nokuphazamiseka okubangelwa ngabantu kuya kuyichaphazela njani iplankton kwindawo ecetywayo.



Ukusetyenziswa kwee-helicopter kufutshane neendawo ezizalela nezitya kuzo, iindawo ezihlala iintaka, kunye neendawo ezihlala amatywina, zinokuchaphazela indlela yokuziphatha kunye nempumelelo yokuzala kwesilwanyana.

Imisebenzi yokomba, kufuneka ikhokelele kuphononongo lwezorhwebo, iya kuvelisa ukukhutshwa kwe-greenhouse gas eya kuba negalelo kutshintsho lwemozulu kwaye inokuba nefuthe kwimpilo yabantu ngokuncipha komgangatho womoya ngenxa yongcoliseko.

Xa kuthe kwachitheka i-oil ekrwada okanye i-gas yendalo, izinto ezingcolisa indalo ezinobungozi kwizinto eziphilayo zaselwandle zinokukhutshelwa elwandle kwaye zinokungcolisa iindawo zokuloba. Umonakalo unokuchaphazela indawo engaselunxwemeni kunye nonxweme, uchaphazela umgangatho wamanzi, kunye nempilo yezilwanyana kunye nabantu.



## IIMPEMBELELO ZOKUPHILA

Imisebenzi ecetywayo inokuba nefuthe elibi kwimisebenzi yorhwebo nokuloba ekuhlaleni ngendlela yokutshintsha indlela yokuziphatha kweentlanzi, ukucuthwa kwamazinga okubanjiswa kwentlanzi, kunye nokunyuka kweenzame zokuloba. Kulindeleke ukuba imisebenzi yokuloba i-tuna kunye neentlobo zookrebe ngaphakathi nakufutshane nendawo ecetywayo yomdla iphazamiseke.

Ngenxa ye-500 m yendawo yokhuseleko ejikeleze isigaba sokomba, iinqanawa zokuloba zinokunyanzeleka ukuba zitshintshe indlela yazo ukuphepha isigaba sokomba kunye nendawo yokhuseleko yayo. Kukho ezinye iimpembelelo ezinokubakho kubukho beenkonzo kumazibuko, ukuphazamiseka kwezinto zakudala kunye nokutshintsha ingqiqo yendawo ngenxa yemisebenzi yokomba kunye nobukho beenqanawa.

Ukukhutshwa kwezinto ezingcolileyo emoyeni ngexesha lemisebenzi yokomba kunokuchaphazela umgangatho womoya wendawo kwaye kukhokelele kwiimpembelelo zempilo ezinobungozi, ezifana nesifo sokuphefumla.

Kwimeko yokuchitheka kwe-oil kakhulu, kunokwenzeka ukuba abalobi bakhutshwe kwiindawo ezingcolisekileyo kunye nokufuduswa kweentlobo zezilwanyana kwiindawo eziqhelekileyo zokutyela kunye nokuloba, nto leyo enokukhokelela ekunciphiseni ukubanjiswa kwentlanzi.

## IIMPEMBELELO KWINKCUBEKO KUNYE NELIFA LEMVELI

Ukuhlola nokomba elwandle kunokuphazamisa ubomi benkcubeko kunye nokuphila koluntu lwasekuhlaleni olunoqhagamishelwano nolwandle. Kungakhokelela ekutshatyalalisweni kwemithombo yenkcubeko kunye neyomoya eyona nto ibalulekileyo kwingqiqo yobuqu, ubunikazi kunye nesidima. Nakuphi na ukuphazamiseka kwamanzi kunokuchaphazela unxibelelwano lomoya, amasiko, intlalontle kunye nezithethe.

## IIMPEMBELELO EZINTLE ZICHONGIWE

**\*Esi sisishwankathelo seempembelelo ezilungileyo ezichongwe yi-SLR Consulting kuYilo lweNgxelo Lobume kwaye ayiquki zonke iimpembelelo ezilungileyo.**

Ingxelo Yobume iphawula ukuba i-project inokudala imisebenzi, inyuse intengiso kumashishini asekhaya, kwaye ivelise ingeniso karhulumente kwiirhafu. Ngelixa i-project iza kuqesha abantu abaphakathi kwama-200-250, linani eliqingqiweyo liya kuba ngabasebenzi basekuhlaleni, njengoko umsebenzi omninzi ufuna izakhono ezikhethekileyo.



# YIBAYINXALENYE

## Kutheni kufuneka ndibandakanyeke?

Umsebenzi ocetywayo unokuchaphazela uluntu oluhlala kufutshane nommandla we-project noluntu oluxhomekeke kulwandlekazi. Ngoko ke, kubalulekile ukwabelana ngezimvo zakho malunga nomsebenzi ocetywayo. Nangona kunjalo, nokuba awuhlali kufutshane nendawo yomdla, unokubandakanyeka.

## Indlela yokubandakanyeka

Qokelela ulwazi oluninzi malunga ne-project. Onke amaxwebhu e-project anokufikelela kwi-internet [APHA](#) okanye ngokwasemzimbeni kwezi ndawo zilandelayo:

| Location   | Name of Facility             | Physical Address  |
|--|------------------------------|---|
| <b>Full Report and Non-Technical Summary are available at:</b> |                              |   |
| Port Nolloth   | Port Nolloth Public Library  | Harbour Street, Port Nolloth                                  |
| Lamberts Bay   | Lamberts Bay Public Library  | 44 Church Street, Lamberts Bay                                |
| Saldanha Bay   | Saldanha Public Library      | Municipal Building, Berg Street, Saldanha                     |
| Hout Bay   | Hout Bay Public Library      | Melkhout Crescent, Hout Bay, Cape Town                        |
| <b>Non-Technical Summary is available at:</b>                  |                              |   |
| Alexander Bay  | Alexander Bay Public Library | Oranjeweg, Alexander Bay                                      |
| Port Nolloth   | Port Nolloth Public Library  | Harbour Street, Port Nolloth                                  |
| Hondeklip Bay  | Kamiesberg Municipality      | 83 Dolphin Street, Hondeklipbaai                              |
| Vredendal  | Vredendal Public Library     | 37 Church Street, Vredendal                                   |
| Lamberts Bay   | Lamberts Bay Public Library  | 44 Church Street, Lamberts Bay                                |
| Elands Bay   | Elands Bay Public Library    | Main Road, Elands Bay   |
| St Helena Bay  | St Helena Public Library     | 26 Columbine Crescent, Britannica Heights, Saint Helena Bay   |
| Velddrif   | Velddrif Public Library      | Voortrekker Rd, Velddrif                                      |
| Doringbaai   | Doringbaai Public Library    | Harbour Rd, Doringbaai  |
| Langebaan  | Langebaan Public Library     | Corner Oostewal & Bree Street, Langebaan                      |
| Paternoster  | Paternoster Public Library   | Corner Street. Augustine's Way (in the Civic Centre building) |
| Yzerfontein  | Yzerfontein Municipal Office | 46 Main Rd, Yzerfontein                                       |

Ukufumana ulwazi malunga nenkqubo, amalungu oluntu angabhalisa kuluhlu lwe-I&AP kwaye angakwenza oko nge-email: [shell-NCUD@slrconsulting.com](mailto:shell-NCUD@slrconsulting.com).

Akukho mfuneko yokuba ukwenze oko kwakhona ukuba sele ubhalisile kuluhlu lwe-I&AP kule project.





## Ngenisa izimvo

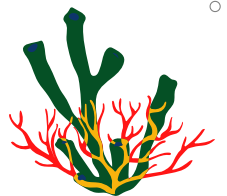
Ngenisa izimvo nge project ecetywayo kunye nengxelo Yobume ungadlulanga owe-8 KweyeThupha 2024. Ngenisa izimvo okanye imibuzo ngokusebenzisa

- indawo: kuMgangatho we-5, iLetterstedt House, iNewlands eMain, eNewlands, 7700;
- umnxeba: +27 21 461 1118;
- SMS / WhatsApp: +27 76 402 1409 okanye
- i-email: shell-NCUD@slrconsulting.com

## Ukubeka iliso kunye nokuthatha inxaxheba kwiNkqubo yoVavanyo lweMpembelelo yokuSingqongileyo

Uthatho-nxaxheba loluntu lubalulekile kwinkqubo ye-ESIA njengoko iqinisekisa ukuba urhulumente uyaweva amazwi abo bachatshazelwe kakhulu yile projekthi.

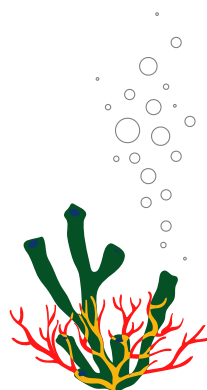
Ukubeka iliso kumanyathelo ahlukeneyo kwinkqubo ye-ESIA ukwazi ukuba mazingeniswe nini izimvo ezibhaliweyo kunye nokuba ziya kubanjwa nini iintlanganiso zokuthatha inxaxheba koluntu.



## **UFUNA UCINGA NGANTONI ?**

li-project zineziphumo ezithe ngqo nezingathanga ngqo kuluntu, kwaye kubalulekile ukucinga malunga nokuba ezi ziphumo zinokuba yintoni na. Le mibuzo ingezantsi iya kukunceda uchonge kwaye ucinge ngempembelelo ye-project kuluntu lwakho.

- **Ingaba le project iza kuyichaphazela njani impilo yam?**
- **Ingaba umsebenzi we-project uza kuchaphazela indlela iintlanzi kunye neentlobo zeentaka ezihamba ngayo kwindawo, kwaye ingaba oku kuya kuba nefuthe kubomi bethu?**
- **Ingaba ndidla ngokuloba kwindawo ye-project okanye ndityhutyha ummandla we-project ukuze ndifikelele kwiindawo zam eziqhelekileyo zokuloba?**
- **Ingaba ndiza kukwazi ukufikelela elunxwemeni naselwandle njengangaphambili?**
- **Ingaba le project iza kubonelela uluntu lwethu ngengqesho, zeziphi iintlobo zezakhono ezifunekayo ukuze uqeshwe, kwaye ingaba iya kuba ngumsebenzi wexesha elide?**
- **Wakuba ugqityiwe umsebenzi, zeziphi iingenelo eziza kuxhamla uluntu?**
- **Ukuba usebenza kwicandelo le-aquaculture, ingaba i-project le ingaba nefuthe kumashishini kunye nemisebenzi kweli candelo?**
- **Ukuba usuka kwicandelo lezokhenketho, ingaba i-project le ingaba nefuthe elihle okanye elibi kukhenketho?**
- **Ingaba le project iza kuzichaphazela njani izenzo zam zenkcubeko nezomoya?**
- **Ingaba le project iya kubachaphazela njani abantwana bethu nezizukulwana ezizayo?**



# INDLELA YOKULUNGISA IZIMVO ZAKHO

Akukho zi-templates okanye iimfuno zendlela ofuna ukucwangcisa ngayo izimvo zakho. Apha ngezantsi kukho umzekelo wendlela onokwenza ngayo xa ulungisa uluvo lwakho.

**1. Dwelisa iinkxalabo zakho eziphambili nge-project kwaye uthethe malunga nokuba ezi zinto zixhalabisayo ziye zaqwalaselwa okanye zasingathwa kwiindibano zothethwano noluntu**

**2. Chaza ukuba ukholelwa ukuba le-project iyakuchaphazela njani impilo yakho, indlela yokuphila yoluntu kunye nezizukulwana ezizayo.**

**3. Chaza ukuba ukholelwa ukuba i-project iya kuba nefuthe njani ekufikeleleni nasekusebenziseni ulwandle, kwaye iya kuba nefuthe njani kwintshukumo yeentlobo zezilwanyana (iintaka, iintlanzi, njl. njl.).**

**4. Chaza ukuba ucinga ukuba i-project iza kunceda wena okanye uluntu lwakho, kwaye ezo zibonelelo ziya kuba yintoni na.**

**5. Chaza ukuba ingaba iimpembelelo ezintle nezimbi ze-project kwaxoxwa ngazo nawe phambi okanye kwiindibano zothethwano noluntu.**

**6. Chaza ukuba ukholelwa ukuba i-project iza kuba nefuthe kwinkcubeko kunye nelifa lakho lomoya ukuba iyaqhubeka.**

**7. Chaza ukuba ngaba uthethwano luka wonke-wonke lwenziwe ngolwimi oluqondayo nokuba lukuncedile na ukuqonda ukuba i-project ibimalunga nantoni na.**

**8. Naziphi na ezinye izimvo**

Igama: \_\_\_\_\_

Ekuhlaleni/Indawo: \_\_\_\_\_

Idilesi: \_\_\_\_\_

Tel No: \_\_\_\_\_

Email: \_\_\_\_\_

Utyikityo

Umhla

\_\_\_\_\_

\_\_\_\_\_

