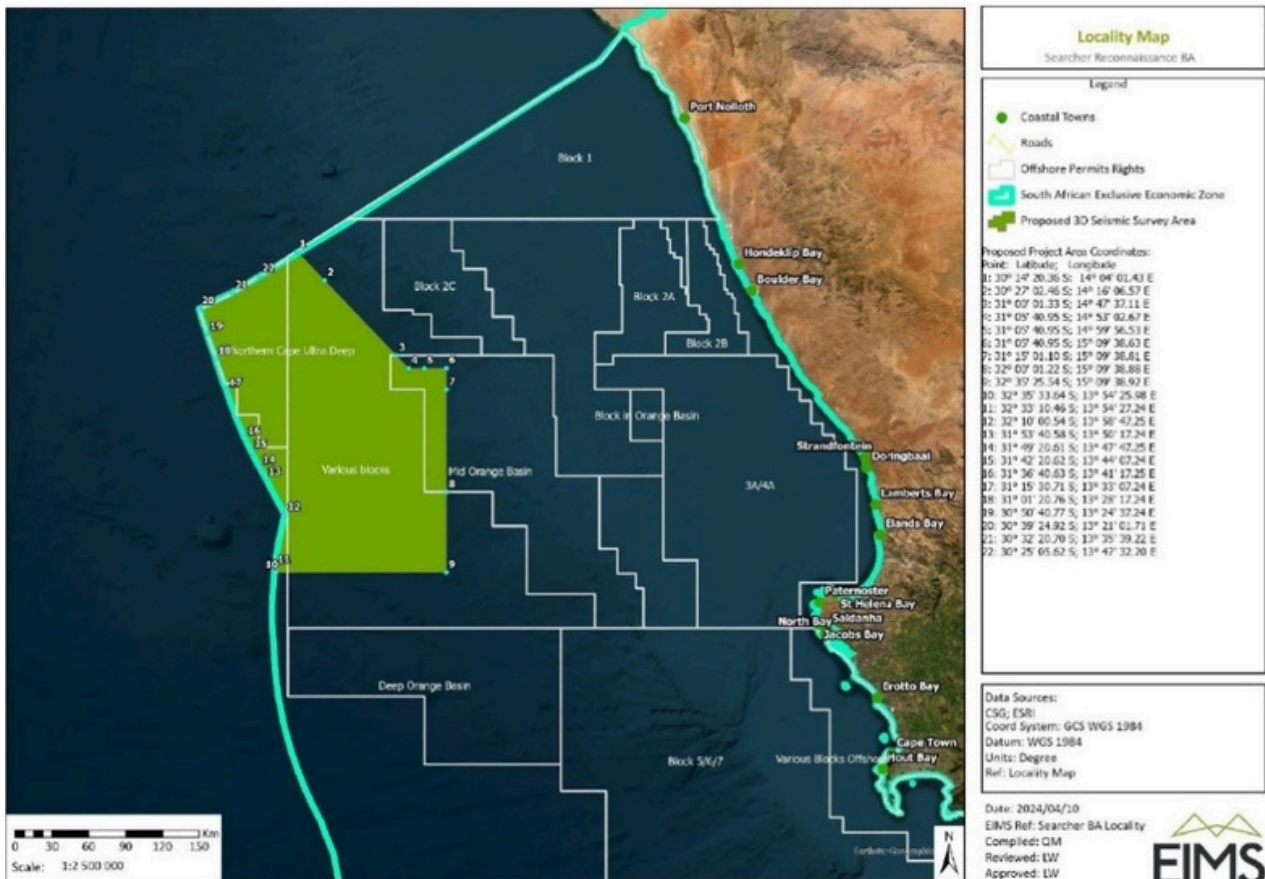


INTO EKUFUNEKA UYAZI

Uphando lwenyikima lwe- Searcher Geodata UK Ltd lwe-3D Imvume yophengululo 12/1/048

Ngo Julayi 2024

INDAWO YOMDLA



INDAWO YE-PROJECT ECETYWAYO IMALUNGA NAMA-256 KM KUDE NONXWEME LWASE ST HELENA BAY, INABELA EMANTLA KUNXWEME OLUSENTSHONA UKUYA MALUNGA NAMA-220 KM KUDE NONXWEME LWE HONDEKLIP BAY. INDAWO YOVAVANYO IMALUNGA NAMA-30,000 KM² NAPHAKATHI KWE-1,000 M KUNYE NE-3,5000 M UBUNZULU.



NGO-2022, INKUNDLA EPHAKAMILEYO YOMZANTSI AFRIKA YAYEKISA I-SEACHER EKUQHUBENI UPHANDO LWENYIKIMA EMVA KOKUFUMANISA UKUBA I-SEARCHER AYIPHUMELELANGA UKUBONISANA NABALOBI ABAKHASAYO, ABANTU BOMTHONYAMA, IMIBUTHO ENGEKHO PHANTSI KUKARHULUMENTE, KUNYE NAMANYE AMAQELA ACHAPHAZELEKAYO ANOMDLA EKUFUMANENI ILUNGELO LAYO LOKUHLOLA, EBIZWA NGOKUBA YIMVUME YOQWALASELO KWAKHONA.

NANGONA KUNJALO, EKUPHELENI KUKA-2022, ISEBE LEMITHOMBO YEZIMBIWA KUNYE NAMANDLA LINIKE I-SEARCHER UGUNYAZISO LOKUHLOLA KWAKHONA 12/1/043 LWEENDALO ESINGQONGILEYO KUPHANDO LWENYIKIMA KWINDAWO EKUDE NONXWEME LOMZANTSI AFRIKA, NJENGOKO LE NDAWO YAYIKUDE NONXWEME. I-SEARCHER YAQALA UMSEBENZI WAYO WOVAVANYO LWENYIKIMA KWEYOMDUMBA KA-2024 KODWA ABAKWAZANGA UKUGQIBEZELA UPHONONONGO OLWALUCETYIWE. IMVUME YOKUHLOLA ABASEBENZA NGAYO IYA KUPHELELWA NGE-10 KWEYENKANGA 2024. I-SEARCHER, KE NGOKO, YENZA ISICELO KWAYE YAFUMANA IMVUME ENTSHA (12/1/048) KWINDAWO ENYE. I-SEARCHER ICEBA UKUQALISA UPHANDO LWAYO EKUQALENI KUKA-2025 UKUBA IFUMANA UGUNYAZISO OLUYIMFUNENI LOKUSINGQONGILEYO.

Yintoni Uphando Lwenyikima?

Uphando lwenyikima lubandakanya ukusasaza amaza esandi elwandle ukwenza umfanekiso womgangatho wolwandle. Sisixhobo esiphambili esisetyenziselwa ukuqonda ukuba kukho i-oil okanye i-gas efumanekayo ngaphantsi komgangatho wolwandle.

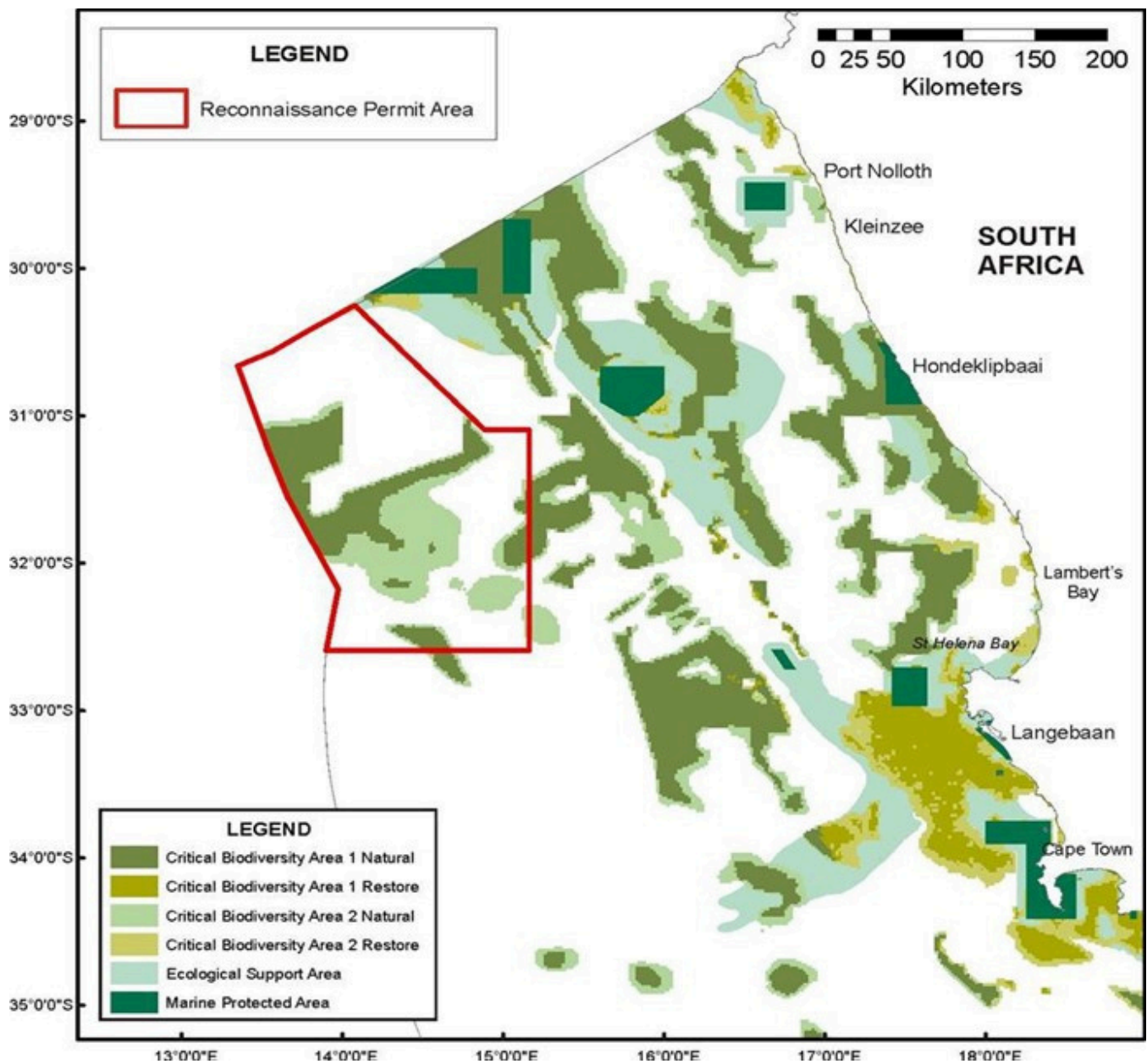
Hondeklip Bay

St Helena Bay

iKapa

**NATURAL
JUSTICE**





**UMMANDLA WOPHANDO LWE-3D UDIBANA NEENDAWO
 EZICHONGIWEYO NJENGE-CRITICAL BIODIVERSITY AREA 1
 (CBA 1): NATURAL AND CRITICAL BIODIVERSITY AREA 2
 (CBA 2): NATURAL.**



IXESHA LEZIGANEKO

IMVUME YOKUQWALASELA KWAKHONA:

IMvume yokuQwalasela kwakhona ifunyanwa kwiSebe leMithombo yeziMbiwa ne-Petroleum, kodwa iqwalaselwa nge-Petroleum Agency of South Africa (PASA). Zombini iMvume yokuQwalasela kunye noGunyaziso lokusiNgqongileyo ziyafuneka kuphando lwenyikima.

UVAVANYO OLUSISISEKO:

UVavanyo oluSisiseko yinkqubo emfutshane yovavanyo lwempembelelo yokusingqongileyo. Ezi mpembelelo zovavanyo lwenyikima zichongiwe kwaye zibekwe kuyilo lweNgxelo yoVavanyo oluSisiseko (Basic Assessment Report).

Uluntu luya kuba nethuba elinye lokuhlomla nge-BAR. Emva koku, i-BAR iyaqakunjelwa kwaye iSebe leMithombo yeziMbiwa naMandla (DMRE) linokunika ugunyaziso kwi-Searcher ukuba enze uphando lwenyikima.

IZIMVO ZOLUNTU:

Onke amaQela Anomdla nachaphazelekayo anikwe ithuba lokuhlomla kuyilo lweNgxelo yoVavanyo oluSisiseko (Basic Assessment Report).

SILAPHA

INGXELO YOVAVANYO OLUSISISEKO (BASIC ASSESSMENT REPORT) YOKUGQIBELA IPAPASHIWE:

Oku kubandakanya zonke izimvo ezifunyenweyo kwiNgxelo yoVavanyo oluSisiseko (Basic Assessment Report). Oku kungeniswa kwi-Sebe leMithombo yeziMbiwa ne-Petroleum ukuze iphonononge kwaye ithathe isigqibo.

ISIGUNYAZISO:

Oku kunikwa ligosa elisuka kwi-Sebe leMithombo yeziMbiwa ne-Petroleum kwaye, ukuba linikiwe, liyakuvumela i-Searcher ukuba iqhubele phambili nophando lwenyikima.

YINTONI ELANDELAYO?

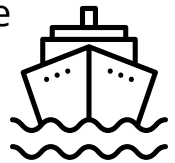
Emva kokuba iSebe likhuphe isigqibo salo, onke amaQela Anomdla Nachaphazelekayo abhaliswe kuvimba weenkukacha ze-project aya kwaziswa ngesiphumo sesicelo kunye nezizathu zesigqibo kwiintsuku ezili-14 emva kokuthathwa kwesigqibo. Emva koko aya kufumana ithuba lokubhena ngokuchasene nesigqibo. Isibheni sigqitywa nguMphathiswa wezaMahlathi, ezokuLoba kunye nokusiNgqongileyo.



IINKCAZO ZOMSEBENZI KUNYE NEZINTO EZINXULUMENE NAZO*

*Esi sisishwankathelo semisebenzi evela kwiNgxelo yoVavanyo oluSisiseko, ayizizo zonke iimpembelelo ezichaziweyo.

INQANAWA YOVAVANYO Kuya kubakho inqanawa enye yovavanyo, exhotyiswe ngemithombo yolwazi (streamers) kunye nemithombo yenyikima. Isixhobo esimamela isandi (acoustic instrument) siya kutsalwa emva kwenqanawa, ngaphantsi komphezulu wolwandle, kwaye siya kukhupha izandi zokubetha kwesandi elwandle. Ukuya kuthi ga kwii-streamers ezili-12 ziya kutsalwa ngasemva kwenqanawa, kubunzulu obumalunga ne-6 m ukuya kwi 25 m, kwaye iphawulwe ekugqibeleni ngee-buoys(i-anchour edadayo esebenza njengophawu lokukhangela indlela, ukubonisa uqaqa lwamatye okanye ezinye iingozi) Imithombo yolwazi (streamers) iya kuba yi-12,000 m ubude kunye ne-2,000 m ububanzi.



INQANAWA YENKXASO Inqanawa yovavanyo iya kuxhaswa sisikhephe esinye sokukhapha ukunceda ekugcineni ezinye iinqanawa kungama okhuselekileyo, ukuthutha abasebenzi, kunye nokuthwala inkunkuma. Ukukhutshwa kwenkunkuma okuqhelekileyo ngenxa yomgangatho (deck) kunye nesithuba soomatshini sokukhupha amanzi kunokwenzeka.



II-HELICOPTER Ii-helicopter zingasetyenziselwa ukuhambisa abasebenzi phakathi kwenqanawa yokuhlola, inqanawa yokukhapha, kunye nomhlaba.



ON-SHORE LOGISTICS BASE Isiseko solungiselelo lonxweme siya kuba kwiZibuko laseKapa (esikhethwayo) okanye eSaldanha Bay.



OKUNOKWENZEKA MALUNGA NEEMPEMBELELO EZICHONGIWEYO KWINGXELO YOVAVANYO OLUSISISEKO*

***Ezi mpembelelo ziphawulwe kwiingxelo zeengcali eziyinxalenye yeNgxelo yoVavanyo oluSisiseko. Esi sisishwankathelo kwaye ke ayizizo zonke iimpembelelo.**

IIMPEMBELELO KWIINTLANZI KUNYE NOBOMI BASELWANDLE

Uvavanyo lwenyikima lunoluhlu olubanzi lweempembelelo kubomi baselwandle, kubandakanywa ukwenzakala ngokwasemzimbeni, ukufa, utshintsho lokuziphatha, kunye nokuncipha kwempumelelo yokuzala. Izandi ezikhutshwe ngexesha lophando lwenyikima ziye zadityaniswa nomonakalo wenyama ezithambileyo, umonakalo kwizitho ezisetyenziselwa ukungcekelela kunye nokuqhelaniswa (nendawo eziphila kuyo izilwanyana), kunye nokutshintsha okwethutyana kunye nokusisigxina kwikhono lokuva. INgxelo yoVavanyo oluSisiseko ibonisa ukuba izilwanyana zaselwandle kuqikelelwa ukuba ziya kuba neempembelelo zokuba ukuya kuthi ga kwi-4.6 km ukusuka kumthombo. Ngenxa yokubaluleka kokuva ekuveliseni nasekunxibelelaneni, lo monakalo unokuchaphazela iintlobo zezilwanyana ezimbalwa nezisengozini yokuphela. Ingxelo ithi iintlobontlobo zezilwanyana eziquka i-humpback, i-Antarctic mink, fin, sei, sperm, neminenga ebulalayo, kunye namahlengesi, kusenokwenzeka ukuba zihamba kule ndawo. Ezinye iintlobo zezilwanyana ezichaphazelekileyo ziquka ufudo olusemngciphekweni wokuphela, oluneendlela zokufuduka ezidlula kunxweme olusentshona; i-African Penguin esemngciphekweni omkhulu wokuphela, ebonise utshintsho ekufumaneni ukutya kunye neempembelelo zempilo ngenxa yophando lwenyikima; i-Cape fur seal; kunye neentlobo ezininzi ze-pelagic ezifana ne-tunas kunye ne-blue marlins.

IIMPEMBELELO ZOKUPHILA

Kusenokubakho iimpembelelo kushishino nokuloba kwabakhasayo kwindawo leyo, ngofikelelo oluncitshisiweyo kwiindawo zokuloba kunye notshintsho kwimveliso yentlanzi kunye nohlobo lwazo lokuziphatha. Akukho mikhumbi yokuloba inokuza kumgama we-165 km² yenqanawa yovavanyo ngenxa yendawo efunekayo yokungabandakanywa kuphando. Ngaphaya koko, notshintsho oluncinci inkqubo yendalo (ecosystem) lunokubangela iimpembelelo zonikezelwano (domino effect) kwiintlanzi nakwizilwanyana zasendle kwindawo leyo. Utshintsho olunje ngokuncipha kwamanani eentlanzi kusenokwenzeka ukuba lukhokelele kwiziphumo ezibi zoqoqosho kuluntu olulobayo kwaye ekugqibeleni luchaphazele kakubi ukhuseleko lokutya kwindawo leyo. Ubomi sele busengozini ngenxa yenkqubo yokuloba, ukuloba ngokugqithisileyo, ukunqongophala kwamathuba engqesho, ungcoliseko, iziphumo zokutshintsha kwemozulu kunye nobhubhani we-Covid 19 waktshanje. Ukongeza, i-project ayinakwenzeka ukuba ibe nesiphumo sokwanda kwamathuba engqesho kuluntu lwengingqi kufutshane nesiza se-project. Imisebenzi iya kuba yeyabantu abanobuchule obuphezulu, kwaye baya kuba mbalwa kubo.

IIMPEMBELELO KWINKCUBEKO KUNYE NELIFA LEMVELI

Uphando lwenyikima kulwandle lunokuphazamisa indlela yokuphila, yencubeko, kunye nokuphila kwabantu basekuhlaleni abanoxibelelwano nolwandle. Ingakhokelela ekutshatyalalisweni kwemithombo yencubeko kunye neyomoya eyona nto ibalulekileyo kwingqiqo yobuqu, ubunikazi kunye nesidima. Umzekelo woku yilahleko ebalulekileyo ekulobeni ngokwesiko nokuzonwabisa ngenxa yotshintsho kumanani eentlanzi nakwiindawo ezifudukayo. INgxelo yoVavanyo oluSisiseko iqaphela ukuba umngcipheko wentlalo kunye nomonakalo onokubakho kumalungelo enkubeko nawemveli unokuba neempembelelo ezibalulekileyo kuluntu olusele lusesichengeni. Ilifa lenkcubeko kunye nelifa lemveli eliphilayo elinxulumene noluntu olunxulunyaniswa namashishini okuloba kunye nokuphila elwandle kunye nokuchongwa ngakumbi njengoluntu lwemveli kunokuchatshazelwa yi-project ecetywayo. Uphando kunye neengxoxo zibonise ukuba ukuwohloka ngokwembali kwezoqoqosho kushishino lokuloba kukhokelele ekuphulukaneni nentsebenziswano yoluntu, imisebenzi kunye nezithethe.

YIBA YINXALENYE

Kutheni kufuneka ndibandakanyeke?

Umsebenzi ocetywayo unokuchaphazela uluntu oluhlala kufutshane nommandla we-project noluntu oluxhomekeke kulwandlekazi. Ngoko ke, kubalulekile ukwabelana ngezimvo zakho malunga nomsebenzi ocetywayo. Nangona kunjalo, nokuba awuhlali kufutshane nommandla onomdla, unokubandakanyeka.

Indlela yokubandakanyeka:

Qokelela ulwazi oluninzi malunga ne-project. Onke amaxwebhu e-project anokufikelela kwi-internet [APHA](#) okanye ngokuziyela ubuqu kwezi ndawo zilandelayo:

The Hout Bay Public Library (Melkhout Crescent, Hout Bay, Cape Town, Western Cape).

The Sea Point Public Library (Civic Centre, Cnr Three Anchor Bay and Main roads, Sea Point, Cape Town, Western Cape).

The Vredenburg Public Library (2 Academy Street, (close to West Coast College), Vredenburg, West Coast, Western Cape).

The Lamberts Bay Public Library (Church Street, Lamberts Bay, Western Cape).

Kamiesburg Local Municipality in Hondeklip Bay (Wag Way street).

A. J Bekeur Library (Robson St, Port Nolloth, Richtersveld, Northern Cape).

Ukuhlomla ngengxelo, amalungu oluntu kufuneka abhalise njengamaQela Anomdla nachaphazelekayo kwaye angakwenza oko nge-email: Searcher48@eims.co.za. Ukuba sele ubhalisile njengamaQela Anomdla nachaphazelekayo ale project, akukho mfuneko yokuba wenze njalo kwakhona.

Naziphi na izimvo ezivakaliswa luluntu, mazingeniswe ungasadlulanga **owe-22 kweyeKhala 2024**. Izimvo okanye imibuzo ingangeniswa ngeposi: **P.O. Ibhokisi 2083, Pinegowrie, 2123; fax: 086 571 9047; umnxeba: 011 789 7170; WhatsApp: 076 281 3326 okanye i-email: Searcher48@eims.co.za**

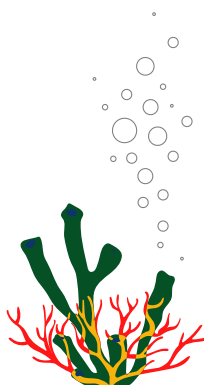
Nceda ufake inombolo yesalathiso se-project '1623' kuyo yonke imbalelwano.



KUFUNEKA UCINGE NGANTONI?

li-project zineziphumo ezithe ngqo nezingathanga ngqo kuluntu, kwaye kubalulekile ukucinga malunga nokuba ezi ziphumo zinokuba yintoni na. Le mibuzo ingezantsi iya kukunceda uchonge kwaye ucinge ngempembelelo ye-project kuluntu lwakho.

- Ingaba le project iza kuyichaphazela njani impilo yam?
- Ingaba umsebenzi we-project uza kuchaphazela indlela iintlanzi kunye neentlobo zeentaka ezihamba ngayo kwindawo, kwaye ingaba oku kuya kuba nefuthe kubomi bethu?
- Ingaba ndidla ngokuloba kwindawo ye-project okanye ndityhutyha ummandla we-project ukuze ndifikelele kwiindawo zam eziqhelekileyo zokuloba?
- Ingaba ndiza kukwazi ukufikelela elunxwemeni naselwandle njengoko bendisenza ngaphambili?
- Ingaba le project iza kubonelela uluntu lwethu ngengqesho, zeziphi iintlobo zezakhono ezifunekayo ukuze uqeshwe kwaye ingaba iya kuba ngumsebenzi wexesha elide?
- Xa i-project igqityiwe, zeziphi iingenelo eziza kuxhamla uluntu?
- Ukuba usebenza kwicandelo le aquaculture, ingaba i-project le nefuthe kumashishini kunye nemisebenzi kweli candelo?
- Ukuba usuka kwicandelo lezokhenketho, ingaba i-project le ingaba nefuthe elihle okanye elibi kukhenketho?
- Ingaba le projekthi iza kuzichaphazela njani izenzo zam zenkcubeko nezomoya?
- Ingaba le project iya kubachaphazela njani abantwana bethu nezizukulwana ezizayo?



INDLELA YOKUCWANGCISA IZIMVO ZAKHO

Akukho mimiselo okanye iimfuno zendlela zokucwangcisa ngayo izimvo zakho. Apha ngezantsi kukho umzekelo wendlela onokwenza ngawo uluvo lwakho.

1. Dwelisa iinkxalabo zakho eziphambili ngeprojekthi kwaye uthethe malunga nokuba ezizinto zixhalabisayo ziye zaqwalaselwa okanye zasingathwa kwiindibano zothetha-thethwano noluntu.

2. Chaza ukuba ukholelwa ukuba le Projekthi iya kuyichaphazela njani impilo yakho kunye nobomi boluntu lwakho?

3. Chaza ukuba ukholelwa ukuba i-Projekthi iyakuba nefuthe njani ekufikeleleni nasekusebenziseni ulwandle, kwaye iyakuba nefuthe njani kwintshukumo yeentlobo zezilwanyanatate (iintaka, iintlanzi njl.).

4. Chaza ukuba ucinga ukuba i-Projekthi izakunceda wena okanye uluntu lwakho kwaye ezo zibonelelo ziyakuba yintoni na.

5. Chaza ukuba ingaba iimpembelelo ezintle nezimbi ze-Project kwaxoxwa ngazo nawe ngaphambili okanye kwiindibano zothethwano noluntu.

6. Xela ukuba ukholelwa njani ukuba i-Project iya kuba nefuthe kwinkcubeko kunye nelifa lakho lomoya ukuba iya phambili.

7. Chaza ukuba ngaba uthethwano lukawonke-wonke lwenziwe ngolwimi oluqondayo nokuba lukuncedile na ukuqonda ukuba i-project ibimalunga nantoni na.

8. Naziphi na ezinye izimvo

Igama: _____

Uluntu/ingingqi: _____

Idilesi: _____

Inombolo yomnxebael: _____

I-imeyile: _____

Umtyikityo

Umhla

