

Yintoni ekufuneka uyazi

I-Africa Oil South Africa Corp (AOSAC)

EHLAZIYIWEYO I-EIA kuNxweme

oluseNtshona loMzantsi Afrika

BLOCK 3B/4B

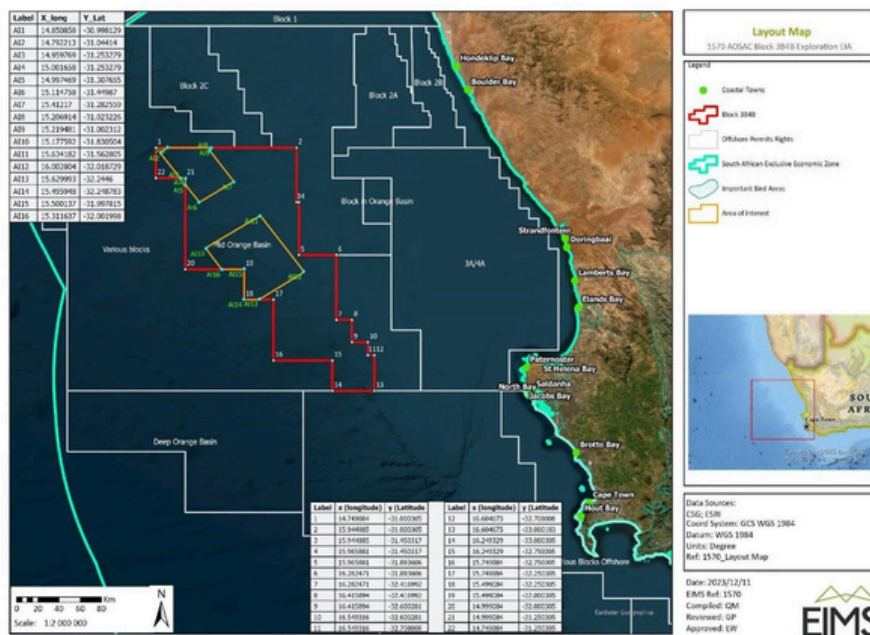
INGXELO EHLAZIYIWEYO YE-EIA EFUMANEKAYO

UKUZE KUNIKEZWE IZIMVO

Iphuhliswe ngoMeyi ka-2024

NGENXA YEZIMVO EZIFUNYENWEYO KWINGXELO YE-EIA, IINKONZO ZOLAWULO LWEMPEMBELELO YOKUSINGQONGILEYO (I-EIMS) NGOKU IQULUNQE INGXELO EHLAZIYIWEYO YE-EIA EFUMANEKAYO UKUZE IQWALASELWE KWAYE ULUNTU LUYIPHONONONGE. IZIMVO KUDE KUBE NGOWE-10 KWEYOCANZIBE 2024.

INDAWO YOMDLA



IBHLOKO 3B/4B YINDAWO EMALUNGA NE 17 581KM2 KWAYE IME KUNXWEME OLUSENTSONA LOMZANTSI AFRIKA. IBHLOKO IBEKW MALUNGA NE 120KM KWINTSHONA YE ST HELENA BAY KWAYE MALUNGA NE 145KM KUMZANTSI-NTSHONA WE-HONDEKLIP BAY. UKUGRUMBA KUCETYWA UKUBA KWENZEKE KUMMANDLA OSEMANTLA NOMBINDI WE-BHLOKO (OBONWA UMTHUBI NGASENTLA)

Iphuhliswe ngoMeyi ka-2024



I-**AFRICA OIL SA CORP**, I-**RICOCURE (PTY) LTD** KUNYE NE-**AZINAM LIMITED** (I-**JOINT VENTURE (JV) PARTNERS**) ZIBAMBE ILUNGELO LOKUHLOLA (ER) LEBLOKO 3B/4B.* I-**TOTALENERGIES ICEBA** UKUBA NGUMSEBENZI XA IMISEBENZI IQALA. UKUSEBENZISA I-ER, I-JV PARTNERS KUFUNeka KUQALA IQHUBE UVAVANYO LWEMPEMBELELO YOKUSINGQONGILEYO (EIA). AMAQABANE E-JV AQESHE IINKONZO ZOLAWULO LWEMPEMBELELO YOKUSINGQONGILEYO (EIMS) UKUBA ZIQULUNQE INGXELO YE-EIA. INGXELO YE-EIA EQULUNQWE YI-EIMS YENZIWA YAFUMANEKA OKOKUQALA UKUZE ULUNTU LUYIPHONONONGE KWAYE LUHLOMLE UKUSUSELA NGE-8 KWEYOMQUNGU 2024 UKUYA KWI-8 KWEYOMDUMBA 2024. NGENXA YEZIMVO EZIFUNYENWEYO KWINGXELO YE-EIA, I-EIMS NGOKU IQULUNQE INGXELO EHLAZIYIWEYO YE-EIA EFUMANEKAYO UKUZE IQWALASELWE KWAYE ULUNTU LUYIPHONONONGE. IZIMVO KUDE KUBE NGOWE-10 KWEYOCANZIBE 2024[

*I-TotalEnergies ibhengeze ukuba, kunye neqabane layo i-QatarEnergy, isayine isivumelwano sokuthatha inxaxheba kwi-Block 3B / 4B, apho i-TotalEnergies iya kubamba i-33% yenxaxheba kwi-Block 3B / 4B kwaye ithathe umsebenzi, ngelixa i-QatarEnergy iya kubamba i-24% umdla.

Jonga <https://totalenergies.com/media/news/press-releases/south-africa-totalenergies-expands-its-presence-orange-basin-new-offshore>



Hondeklip Bay

St Helena Bay

Cape Town

UKUBA UNGATHANDA ISISHWANKATHELO ESIFUTSHANE SOLWAZI OLUBALULEKILEYO OLUFUNYENWE KWINGXELO YOKUQALA YE-EIA, UNGAFIKELELA KWINCWADANA YETHU [APHA](#).

 **NATURAL JUSTICE**



Yintoni entsha kwiNgxelo eHlaziyiweyo ye-EIA?

UTSHINTSHO KWINGXELO YE-EIA KUNYE NAMAXWEBHU ANXULUMENYO ANXULUMENE NOLU LONGEZO LULANDELAYO:

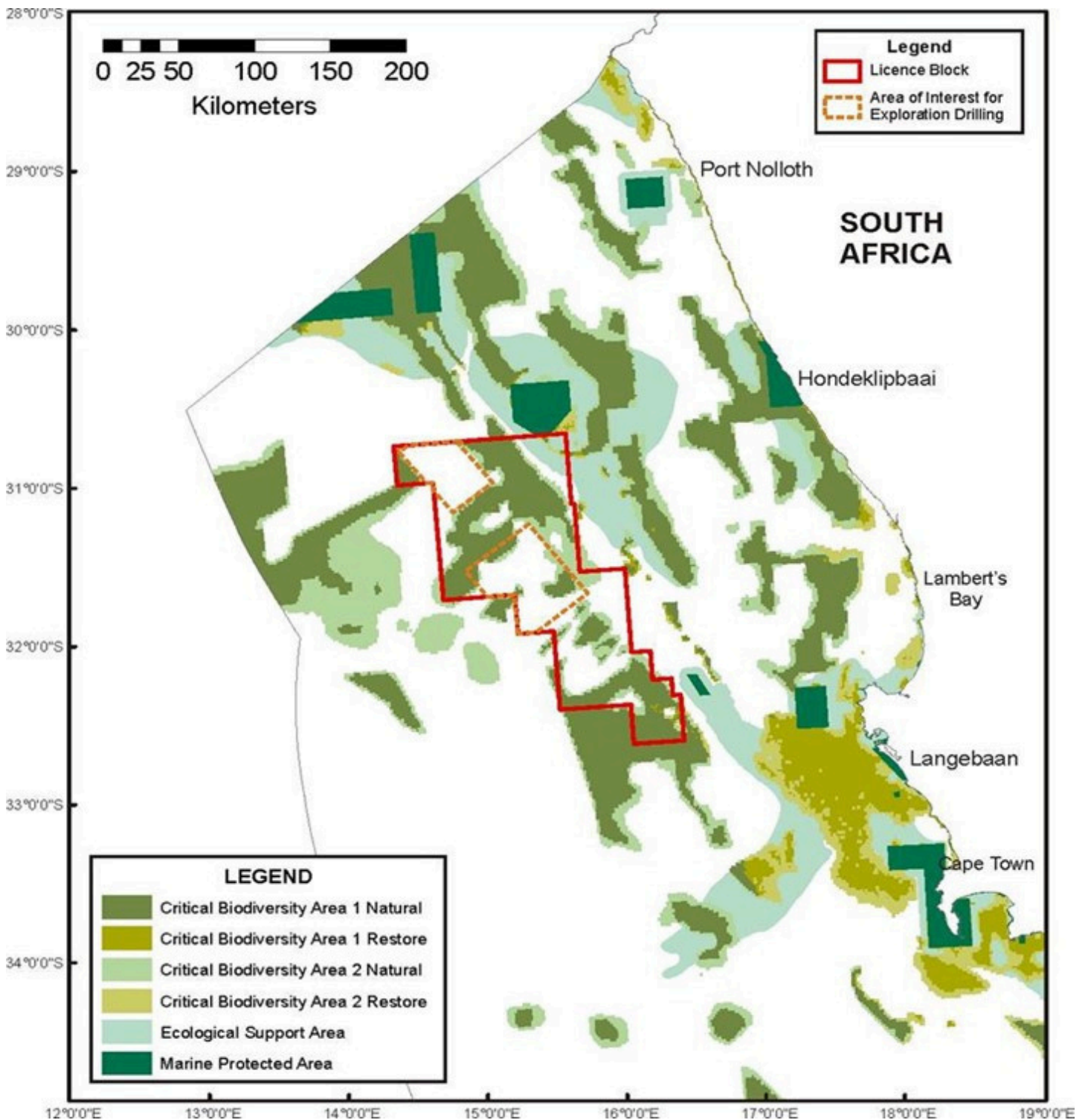
- INGXELO EHLAZIYIWEYO NELUNGISIWEYO YE-OIL SPILL DRIFT MODELLING, NGOKU EYIMODELI YOKUCHITHEKA KWE-OIL EKRWADA NJENGEMEKO EMBI KAKHULU.
- INGXELO EHLAZIYIWEYO NELUNGISIWEYO EYI DRILLING DISCHARGE MODELLING REPORT, NGOKU ITHATHELA INGQALELO UKHETHO LOKUSEBENZISA II-NON-AQUEOUS DRILLING FLUIDS (NADF'S) KWAKUNYE NE-WATER BASED MUDS (WBM'S).
- APHO KUFANELEKILEYO, KUHLAZIYWE UPHONONONGO LWEENGCALI UKUZE KUQWALASELWE IZIPHUMO ZEEMODELLING REPORTS EKHANKANYIWEYO NGASENTLA.
- IZILUNGISO EZOHLUKENEYO KUNYE NOHLAZIYO LWENGXELO YE-EIA KUNYE NENKQUBO YOLAWULO LOKUSINGQONGILEYO (EMPR) UKUZE KUFAKWE IZIFUNDO EZILUNGISIWEYO ZEENGCAPEPHE KUNYE NE-MODELLING REPORT.

Loluphi ulwazi olubekwe kweli phetshana?

ELI PHETSHANA LIZA KUJOLISA KUPHELA KWIIMPEMBELELO ZEMEKO ZE-CONDENSATE BLOW OUT KUNYE NEZE-CRUDE OIL BLOW OUT.



Imizekelo yezixhobo zokomba.



THIS LOMFANEKISO UBONISA UKUBA KUFUTSHANE KWE-BHLOKO 3B/4B KWIINDAWO EZIBALULEKILEYO ZEZITYALO NEZILWANYANA, IINDAWO ZENKXASO YENDALO KUNYE NEENDAWO ZASELWANDLE EZIKHUSELWEYO.

Iphuhliswe ngoMeyi ka-2024

NATURAL JUSTICE





ILUNGELO LOKUPHONONOWA:

Oku kufunyanwa kwi- DMRE, xa uGunyaziso lokusiNgqongileyo lunikiwe. Kule Bhloko, i- EA yangaphambili yafunyanwa ukuze idatha iphinde isetyenziswe kwakhona xa i- ER inikiwe.

UVAVANYO LWEMPEMBELELO YOKUSINGQONGILEYO (ENVIRONMENTAL IMPACT ASSESSMENT (EIA):

Olu vavanyo lujolise ekucingeleni iimpembelelo zokusingqongileyo nezentlalo ze-project. Oku kufakwa kwingxelo kwaye kusekwe koku, i-DMRE inokunikezela okanye yale uGunyaziso lokusiNgqongileyo.

INGXELO EYILWAYO ye-EIA yenziwe yafumaneka ukuze uluntu luyiphonononge kwaye luhlomle

IZIMVO ZOLUNTU:

AMaqela aBanomdla naChaphazelekayo (I&APs) angenise izimvo kuyilo lwe-EIA

Ingxelo eHLAZIYIWEYO ye-EIA, ethathele ingqalelo izimvo kuyilo lwe-EIA, ngoku iyafumaneka kwi-website ye-EIMS [APHA](#).

Izimvo zoluntu: Onke amaQela Anomdla Nachaphazelekayo anikwa ithuba lokuhlomla nge-EIA EHLAZIYIWEYO.

SILAPHA

INGXELO YOKUGQIBELA YE-EIA EPAPASHIWEYO:

Oku kuquka onke amagqabantshintshi afunyenweyo kuyilo lwengxelo ye- EIA. Oku kungeniswa kwi-Petroleum Agency of South Africa (PASA) ukuze iqwalaselwe kwaye iphononongwe.

ISINDULULO SE-PASA:

Emva kophononongo lwayo, i-PASA iyakubonelela ngesindululo kwi- DMRE malunga nokuba inike okanye yale uGunyaziso lokuSingqongileyo.

UGUNYAZISO LOKUSINGQONGILEYO:

Oku kunikezelwa ligosa elivela kwi- DMRE kwaye, ukuba linikiwe, liyakuvumela i- JV Partners ukuba baqhubele phambili nokuhlola kwabo.

YINTONI ELANDELAYO?

Emva kokuba iSebe likhuphe isigqibo salo, onke amaQela Anomdla Nachaphazelekayo abhaliswe kuvimba weenkukacha ze-project aya kwaziswa ngeziphumo zesicelo kunye nezizathu zesigqibo kwiintsuku ezili-14 zomhla wesigqibo.

Ukuba kukho nabani na ongavumelaniyo nesigqibo esenziwe liSebe, isibheni esichasene nesigqibo sinokungeniswa kwiSebe lezokuLoba amaHlathi nokusiNgqongileyo (DFFE) phakathi kweentsuku ezingama-20 ukususela kumhla isigqibo esichazwe ngawo kwi-I&APs.



UKUBAKHO KWENKXALABO MALUNGA NEEMPEMBELELO ZE-PROJECT KWINGXELO EHLAZIYIWEYO YE-EIA*

*Ezi mpembelelo zibonakaliswe kwiingxelo zeengcali ngokumalunga nemeko embi kakhulu (okt. ukuchitheka kwe-oil). Esi sisishwankathelo kwaye ke ngoko ayizizo zonke iimpembelelo eziqukiweyo. Jonga incwadana yangaphambili [APHA](#) ngolwazi ngezinye iimpembelelo.

IIMPEMBELELO KWIINTLANZI NEZILWANYANA ZASELWANDLE

Kukho iimpembelelo ezininzi ezingqalileyo nezingangqalanga kwiintlanzi nakwezinye iindidi zezilwanyana zaselwandle ezonokubangelwa kukuchitheka kwe-oil. I-oil echithekileyo kwimekobume yaselwandle inokuba nefuthe elibi ngoko nangoko kumgangatho wamanzi, kunye neziphumo eziyityhefu ezivela kwi-oil ezinokukhokelela ekufeni kweentlobontlobo zezilwanyana zaselwandle. Ungcoliseko lwe-oil kwiintlobontlobo zeentlanzi lunokubangela ukufuduka kweentlobontlobo zezityalo nezilwanyana kwiindawo eziqhelekileyo zokondla kunye nezikhuselayo kwakunye nokungcoliseka okunokwenzeka okufana nokuvala kweentlanzi ezinokukhokelela ekufeni kweentlobontlobo zentlanzi.

I-Condensate Spill

I-Condensate yimveliso ekhutshiweyo (i-liquid hydrocarbon) ethi inyukele phezulu kwaye ngamanye amaxesha ibizwa ngokuba 'yi-light oil'. Ngokusekelwe kubungakanani obunokwenzeka be-surface oiling, impembelelo inokuchaphazela iintlobo ezinkulu ze-pelagic species (umzekelo. i-tuna kunye ne-sword fish) kunye neentlobo ze-demersal (umzekelo, i-kingklip ne-hake). Ukubakho kochaphazeleko kuyehluka ngokobungakanani bongcoliseko ngokunxulumene nendawo yeendawo zokuloba. Amathuba ongcoliseko yi-100% kwiintlobo ezinkulu ze-pelagic longline, i-50% kwiintlobo ze-tuna pole-line, i-30% kwiintlobo ze-demersal trawl kunye ne-20% kwiintlobo ze-demersal longline.



Ukuchitheka kweOyile eKrwada

Uvavanyo lwenziwe kwiimeko ezine zokuchitheka kwe-oyile (3.3%, 10%, 50% kunye nama-90% okuba nokwenzeka xa kunokuchitheka i-oil). I-90% enokwenzeka ulwandlalo ludibane nemihlaba yokuloba yeentlobo ezinkulu ze-pelagic ende (umzekelo. ityhuna kunye ne-sword fish). I-50% enokwenzeka ulwandlalo ludibane nemihlaba yokuloba yeentlobo ze-demersal species (umzekelo, i-kingklip ne-hake), kunye neentlobo ezinkulu ze-pelagic longline kunye ne-tuna pole-line. I-10% enokwenzeka ulwandlalo ludibane nemihlaba yokuloba, i-pelagic purse-seine encinci (umzekelo, i-herring, isardines, mackerel, anchovies), i-pelagic longline enkulu, i-tuna pole-line, i-linefish kunye nemihlaba ye-rock lobster ekwi-west coast. I-3% ye-contour enokwenzeka inabela kuwo wonke amabala wokuloba kwi-demersal, i-pelagic purse-seine encinci, i-pelagic longline enkulu, i-tuna pole-line, i-linefish kunye ne-inshore kunye nemihlaba ye-rock lobster ekwi-west coast.



IIMPEBELELO KUHLOBO LOKUZIPHILISA

Iimpembelelo kumashishini okuloba ngenxa yokuchitheka kwe-oil ziya kuquka ukuvalwa ngamathuba athile amabala okuloba ukuze kucocwe kwaye kuhlaziywe, ukufuduswa ixesha elide kwiindawo zokuloba ukuze kuncitshiswe iziphumo zongcoliseko, ukulahleka kwemisebenzi kunye nokungaqeshwa, kunye nelahleko kwiimarike zokutya kwaselwandle kunye nengeniso. Ukungalandela ukuchitheka kwe-oil, iinqanawa zokuloba zinokuphepha iindawo ezichatshazelwa lungcoliseko oluthintela ukubanjiswa kweentlanzi ezingcolisekileyo kunye nokuqinisekisa ukhuseleko lwemveliso. Le ndlela yokuziphatha yokuphepha inokuphazamisa imisebenzi yokuloba, njengoko iinqanawa zinokufuna ukufuduka kwezinye iindawo zokuloba, nto leyo enokukhokelela ekonyukeni kweendleko zamafutha kunye nokucutheka kokusebenza ngokufanelekileyo kokuloba. Ukuthintelwa kweendawo ezingcolisekileyo kusenokukhokelela kukhuphiswano phakathi kweenqanawa zokuloba ukuze kufikelelwe kwiindawo ezingachaphazelekiyo zokuloba, nto leyo eyandisa unqzulwano lwemithombo kunye neningeni yolawulo. Kwiimeko apho iintlanzi zisesichengeni sokuchitheka kwe-oil kwaye emva koko zithinjwe ngokuloba, kukho umngcipheko wokwaliwa kwemveliso ngenxa yokungcoliseka. Iintlanzi ezingcoliswe ziintsalela ze-oil zinokusilela ukufikelela kwimigangatho ebekwe zii-arhente ezilawulayo kunye neemarike zokutya kwaselwandle, okunokukhokelela ekukhatyweni komthwalo wonke obanjisiweyo. Oku kukhatywa akukhokeleli nje kuphela kwilahleko yemali kwimisebenzi yokuloba kodwa kwakhona kujongela phantsi ukuzithemba kwabathengi kwiimveliso zokutya kwaselwandle ezivela kwimimandla echaphazelekayo. Uphononongo lubonise ukuba imfuno yentengiso yokutya kwaselwandle inokwehla kakhulu emva kokuchitheka kwe-oil, ingakumbi kwimimandla echatshazelwe ngokuthe ngqo lungcoliseko. Ukulahleka kokufikelela kwiimarike kunokuba neziphumo zezoqoqosho zexesha elide kuluntu olulobayo oluxhomekeke kurhwebo lokutya kwaselwandle.

IIMPEBELELO KWINKCUBEKO NAMAFA

Nayiphi na impembelelo kwimfezeko yenkqubo yendalo engaselunxwemeni naselwandle ngokuchitheka kwe-oyile ngengozi kunokuba nefuthe elibi ngoko nangoko kwimeko-bume engqongileyo yaselwandle kwaye ngaloo ndlela inokuba nefuthe kwiinkalo ezahlukeneyo ezenza ilifa labantu eliphathekayo nelingaphathekiyo.



Okwasemoyeni wenkolo

Ukuziqhelanisa nesiko kunye nokuzibandakanya ngokomoya nolwandle kufuna ulwandle olusempilweni. Nangona iingxelo zeengcaphephe ziphawula ukuba kukuchitheka okuncinci kwe-oil kuphela okunokwenzeka, kwaye akunakufane kwenzeka ukuba ifike elunxwemeni, kuluntu olunobudlelwane ngokwenkolo nolwandle nonxweme, iimpembelelo ezicingelwayo zingathathwa njengezinobuzaza.



Imvakalelo ngobunini bendawo

Iidolophu ezixabisekileyo zelifa lemveli kunye neendawo zixhomekeke kwingqiqo yendawo ukutsala iindwendwe, abaphandi kunye nabatyali-mali. Ukuba indawo ichaphazeleka kakubi kukuchitheka kwe-oil, abantu abanakuze beze kutyelela ezi dolophu kunye neendawo, ngaloo ndlela, kutshabalale imvakalelo yendawo.

Ilifa lendalo

Ilifa lemveli kunye nelifa lenkcubeko lixhomekeke kwelinye, kwaye nayiphi na impembelelo elwandle, njengelifa lendalo, iya kuba nefuthe elibi kwilifa lenkcubeko. Uluntu oluxhomekeke kuluhlu olubanzi lomjikelo wobomi kunye nezithethe zokuphilisa ezibandakanya ukusetyenziswa kwendalo (o.k.t. i-fynbos namayeza asuka elwandle) kwiinkqubo zenkcubeko, ziya kuchaphazeleka kakhulu.



Impilo

Abantu basebenzisa ulwandle kwiindlela zenkcubeko ukuphucula, ukugcina nokubuyisela impilo yomzimba nengqondo. Ukufikelela kulwandlekazi olusempilweni kubalulekile njengoko naziphi na iimpembelelo elwandle, ezifana nokuchitheka kwe-oil, zinokuchaphazela impilo yoluntu oluselunxwemeni olusela amanzi olwandle ngeenjongo zenkcubeko.



Kutheni kufuneka ndibandakenyeka?

Iprojekthi ecetywayo inokuchazela uluntu oluhlala kufutshane nommandla weprojekthi kunye noluntu oluxhomekeke kulwandlekazi. Ngoko ke kubalulekile ukwabelana ngezimvo zakho ngeprojekthi ecetywayo. Nangona kunjalo, okuba awuhlali kufutshane nommandla onguMda, unokubandakanyeka.

Indlela yokubandakanyeka

Qokelela ulwazi oluninzi malunga nprojekthi kangangoko kunokwenzeka. Onke amaxwebhu eprojekthi anokufumaneka kwi intanethi [APHA](#) okanye ngokomzimba kwezindawo zilandelayo

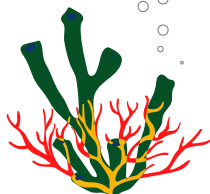
Description of event:	Availability of Scoping Report (SR) for Public Review and Comment
Where	The Hout Bay Public Library (Melkhout Crescent, Hout Bay, Cape Town)
	The Sea Point Public Library (Civic Centre, Cnr Three Anchor Bay and Main Roads, Sea Point, Cape Town)
	Yzerfontein Tourism Office (50 Main Road, Yzerfontein)
	The Vredenburg Public Library (2 Academy Street (close to West Coast College), Vredenburg)
	St Helena Bay Library (2 Albertros Street, St Helena Bay)
	Elandsbaai Public Library (Main Road, Elandsbaai)
	The Lamberts Bay Public Library (Church Street, Lamberts Bay)
	Kamiesburg Local Municipality in Hondeklip Bay (Wag Way street)
	A. J Bekeur Library (Robson Street, Port Nolloth, Richtersveld)

Ukuhlomla ngalengxelo, uluntu kufuneka lubhalise i-I&APs kwaye lungakwenza oko nge-imeyile: block3b4b@eims.co.za okanye ngomnxeba: 011 789 7170. Ukuba sele ubhalisile njenge-I&AP kule project, akufuneki ukwenze oko kwakhona.

Naziphi na izimvo ezivakaliswa luluntu, mazingeniswe ungasululanga umhla we-10 kuMeyi 2024. Izimvo okanye imibuzo ingangeniswa **ngeposi.: P.O. Box 2083, Pinetown, 2123; ifeksi: 086 571 9047; umnxeba wefowni: 011 789 7170; WhatsApp: 076 281 3326 okanye i-imeyile: block3b4b@eims.co.za**

Nceda ufake inombolo yesalathiso yeprojekthi negu '1570' kuyo yonke imbalelwano.

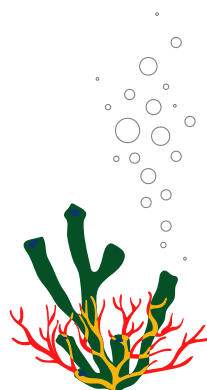
Iphuhlise ngoMeyi ka-2024



YINTONI EKUFUNEKA UCINGE NGAYO?

Iprojekthi zokuphonononga kunye nemveliso zineziphumo ezithe ngqo nezingathanga ngqo kuluntu kwaye kubalulekile ukucinga malunga nokuba eziziphumo zingayintoni. Lemibuzo ingezantsi iyakukunceda uchonge kwaye ucinge ngempembelelo yeprojekthi kuluntu lwakho.

- **Ingaba le projekthi izakuyichaphazela njani impilo yam?**
- **Ingaba umsebenzi weprojekthi uza kuchaphazela indlela iintlanzi kunye neentlobo zeentaka ezihamba ngayo kwindawo kwaye oku kuyakuba nefuthe kubomi bethu?**
- **Ngaba ndidla ngokuloba kwindawo yeprojekthi okanye ndityhutyha ummandla weprojekthi ukuze ndifikelele kwiindawo zam eziqhelekileyo zokuloba?**
- **Ngaba ndiza kukwazi ukufikelela elunxwemeni naselwandle njengoko bendisenza ngaphambili?**
- **Ingaba ukuchitheka kwe-oyile/kwerhasi kunokuba nefuthe elinjani kuluntu lwethu?**
- **Ingaba le projekthi izakubonelela uluntu lwethu ngengqesho, zeziphi iintlobo zezakhono ezifunekayo ukuze uqeshwe kwaye ingaba iyakuba ngumsebenzi wexesha elide?**
- **Wakuba ugqityiwe umsebenzi, ziziphi iingenelo uluntu elizakuxhamla kuzo?**
- **Ukuba usebenza kwicandelo le-aquaculture, ingaba iprojekthi le ingaba nefuthe kumashishini kunye nemisebenzi kwelicandelo?**
- **Ukuba usuka kwicandelo lezokhenketho, ingaba iprojekthi le ingaba nefuthe elihle okanye elibi kukhenketho?**
- **Ingaba leprojekthi izakuzichaphazela njani izenzo zam zenkcubeko nezomoya?**
- **Le project iya kubachaphazela njani abantwana bethu kunye nezizukulwana ezizayo?**



INDLELA YOKUCWANGCISA IZIMVO ZAKHO



Akukho zithempleyti okanye iimfuno zendlela yokucwangcisa izimvo zakho. Apha ngezantsi kukho umzekelo wendlela onokuthi ucwangcise ngayo izimvo zakho.

1. Dwelisa iinkxalabo zakho eziphambili ngeprojekthi kwaye uthethe malunga nokuba ezizinto zixhalabisayo ziye zaqwalaselwa okanye zasingathwa kwiindibano zothetha-thethwano noluntu.

2. Chaza ukuba ukholelwa ukuba le Projekthi iya kuyichaphazela njani impilo yakho kunye nobomi boluntu lwakho?

3. Chaza ukuba ukholelwa ukuba i-Projekthi iyakuba nefuthe njani ekufikeleleni nasekusebenziseni ulwandle, kwaye iyakuba nefuthe njani kwintshukumo yeentlobo zezilwanyanata (iintaka, iintlanzi njl.).

4. Chaza ukuba ucinga ukuba i-Projekthi izakunceda wena okanye uluntu lwakho kwaye ezo zibonelelo ziyakuba yintoni na.

5. Xela ukuba ngaba iimpembelelo ezintle nezimbi ze-Projekthi zaxoxwa nawe phambi okanye kwiindibano zoluntu.

6. Xela ukuba ukholelwa ukuba i-Projekthi iyakuba nefuthe kwinkcubeko kunye nelifa lakho lomoya ukuba iya phambili.

7. Xela ukuba ngaba udliwano-ndlebe noluntu lwenziwa ngolwimi oluqondayo nokuba kukuncedile na ukuqonda ukuba i-Projekthi imalunga nantoni na.

8. Naziphi na ezinye izimvo

Igama: _____

Uluntu/ingingqi: _____

Idilesi: _____

Inombolo yomnxeba: _____

I-imeyile: _____

Umtyikityo

Umhla

Iphuhliswe ngoMeyi ka-2024

