
Proposed Lokichar to Lamu Crude Oil Pipeline Project: Addendum for Onshore Crude Oil Storage at Lamu Port & Garissa Re-alignment

*Garissa County Meeting: 11 March 2020 -Modika Chief's Office, Modikare ,
Garissa County.*

Submitted to:

Pipeline Project Management Team

Submitted by:

ESF Consultants Ltd

WoodlandsOfficePark,1CSuite1st Floor Woodlands Road, off Lenana Road. P O Box 7745-00100
Nairobi, Kenya

+254 736100205

11 March 2020

Distribution List

ESF Consultants Ltd - 1 copy pdf

PPMT - 1 copy pdf

Table of Contents

41.0 INTRODUCTION	4
2.0 ATTENDANCE	4
3.0 AGENDA	4
4.0 PURPOSE OF THE MEETING.....	4
5.0 PROJECT TEAM.....	5
6.0 PROJECT STATUS.....	5
7.0 ESIA PROCESS UPDATE.....	5
8.0 ESIA ADDENDUM FOCUS.....	6
9.0 IDENTIFICATION OF ISSUES.....	7
10.0 CLOSURE	17

TABLES

Table 1: Identified Issues, Questions, Comments and Responses	7
Table 2: List of Attendees.....	Error! Bookmark not defined.

APPENDICES

APPENDIX A
List of Attendees

APPENDIX B
Presentation

PURPOSE OF THIS DOCUMENT

This document represents the minutes taken during a public meeting convened as part of the Environmental Impact Assessment (ESIA) for the proposed Lokichar to Lamu Crude Oil Pipeline (LLCOP) project, Addendum report for the Onshore Crude Oil Storage Farm at the Lamu port and Garissa Re-alignment. The document presents a summary of the issues, concerns, questions, and suggestions raised by the stakeholders who attended the meeting. The meeting was held on Wednesday, 11 March 2020 at the Lantern Resort in Garissa County, Kenya.

The objectives of the meeting were to provide more information about the pipeline route re-alignment that occurred as result of the initial route passing through the Kenya Defence Force Barracks at Modikare, hence propose mitigation measures and to provide stakeholders with an opportunity to contribute comments and to raise issues of concern, questions and possible suggestions. Issues and questions raised during the meeting are captured in the Comment and Response Report that will form part of the Final ESIA Report that was submitted in NEMA in November 2019 for a decision.

Your comments are important!

Stakeholders who attended the meeting are invited to review the draft minutes and ensure that the questions, concerns and comments have been captured correctly. Please send any comments and changes that you would like to make within 14 days of receipt to the Public Participation Office.

Address for Comments:

Mr James Kambo

Stakeholder in-country lead (ESF Consultants)

Telephone

(+254) 736 100205

Email:

james.kambo@esfconsultants.org

Address

Woodlands Office Park,
1C Suite 1st Floor
Woodlands Road, off Lenana Road.
PO Box 7745-00100
Nairobi, Kenya

20.0 INTRODUCTION

The meeting started at 11.00 am and was chaired by Mr. Duncan Oyaro who welcomed and thanked the guest for attending the meeting. He requested one of the guests to open the forum with a prayer.

Mr Oyaro gave a briefing on the status of the LLCOP ESIA report, stating that it was submitted to NEMA in November 2019 and advertised in the National Dailies in December 2019 inviting the public to review the report and make comments. He added that this addendum report will form part of the LLCOP ESIA report which is currently under review by NEMA. He stated the purpose of the meeting was to capture issues, questions and concerns in relation to the pipeline route re-alignment in Modikare, Garissa County.

21.0 ATTENDANCE

Mr Oyaro requested the guests to introduce themselves.

Twelve attendees signed the attendance register. The list of attendees is attached as Appendix A.

22.0 AGENDA

The following agenda was presented to, and accepted by the participants:

17. Purpose of Meeting
18. Project Team
19. Project Status
20. Project Description
 - 20.1. Garissa Route Re-alignment
21. Environmental and Social Impact Assessment (ESIA) Process
 - 21.1. ESIA Process Update
 - 21.2. ESIA Addendum Focus
22. Discussions
23. Way forward
24. Closure

23.0 PURPOSE OF THE MEETING

Mr Oyaro explained the purpose of the meeting as follows:

- Introduce the Proposed Lokichar to Lamu Crude Oil Pipeline Project and delivery teams.
- Provide an overview of the ESIA process to date.
- Discuss the proposed project variations on pipeline route realignment between station 11 and 12.
- Identify issues, comments and responses regarding the proposed project variations and associated approach.
- Indicate what will happen with the information.
- Indicate how stakeholders can participate in the future.

24.0 PROJECT TEAM

Mr Oyaro introduced the project teams and explained the role each team plays in the LLCOP project as follows:

- The Government of Kenya – The Government of Kenya sets the strategy.
- LCDA - Authority responsible for the development of the LAPSSET Corridor.
- PPMT- Partnership between Government (Ministry of Mining and Petroleum- MoMP) and oil companies to develop the Pipeline Project; and
- Golder and ESF Consultants – Independent consultants, appointed to undertake the ESIA.

25.0 PROJECT STATUS

Mr. Duncan gave an overview of the project status. He gave the following updates:

- ESIA study report for the proposed LLCOP was submitted to NEMA in November 2019 but requires an Addendum to reflect design changes in Lamu and Garissa County.
- All technical and permitting activities are being completed to support the LLCOP project
- Project design that is; Front-End Engineering Design (FEED) has been completed
- All land Outside Turkana County, for the pipeline has been Gazetted and Surveyed by NLC except areas close to Ijara in Garissa County
- PPMT is undertaking work to identify suitable companies to bid to construct the pipeline
- PPMT to make a final investment decision (FID) by the end of 2020.

26.0 ESIA PROCESS UPDATE

Mr Oyaro gave an update of the ESIA for the LLCOP. He stated that the assessment begun in March 2018 and concluded in October 2019 and that all stakeholders were involved throughout the process. In November 2019, the final ESIA report was submitted to NEMA and advertised on National Dailies in December 2019 notifying the public to review the report and make comments.

He added that a meeting was held between Kenya Defense Forces (KDF) and LAPSSET Corridor Development Authority in early December 2019, it was informed by KDF that the gazette corridor crossed through a military area in Garissa and affected a portion of KDF land within the military area. A decision was made by LCDA in January 2020 to re-route the LLCOP corridor in order to avoid the military area. Two possible re-route options were identified; one north of the military area, and the other to the south. In coordination with the LCDA, the Pipeline Project Management Team accordingly redesigned the affected pipeline section and relocation of station 12 into the new alignment of the LAPSSET corridor, to the north of the military area. Subsequent to that NEMA requested an Addendum study to be undertaken on the affected areas and the findings and mitigation measures to the identified impacts be presented to NEMA as Addendum to LLCOP ESIA. Once the addendum has been submitted notification to be undertaken for public review and comments to be made.

27.0 ESIA ADDENDUM FOCUS

The ESIA Addendum will focus on the affected re-alignment areas and stakeholder engagement exercise will only be undertaken on the affected areas.

Stakeholder contributions collected during these engagements will be recorded and made publicly available in a Comment and Response Report for people to verify that their contributions have been recorded correctly.

Special efforts will be made to engage with potentially directly affected people including women, the youth, as well as local, regional and national educational and religious organisations, research institutions, NGOs, and other key organisations. Any queries and concerns can be raised at any time through the contacts provided.

28.0 IDENTIFICATION OF ISSUES

All questions, issues, comments and associated responses raised during the discussion session are captured in Table 1.

Date of meeting: 11 March 2020

Venue: Chief's Office, Modika, Garissa County.

Table 3: Identified Issues, Questions, Comments and Responses

	Meeting	Issue/Question/Comments	Commentator	Response
1	Community Meeting, Modika	After the engagement we had with you last year, your geo-technical team came and collected samples on what we assumed was the final route alignment for LLCOP. Why is this changing?	Hussein Karur Assistant Chief	There has been a variation on the proposed alignment because the current alignment traverses land that belongs to the KDF. Decisions have been made to reroute the affected section to avoid this area.
2	Community Meeting, Modika	Is this realignment only for the pipeline.	Hussein Karur Assistant Chief	The realignment is for the LAPSSET Corridor.
3	Community Meeting, Modika	We haven't heard of any benefits from the project, what will happen to our grazing lands? Such will be taken up by the project.	Mohamed Abdulahi	After installation of the pipeline, it will be buried, and the excavated areas will be rehabilitated. Areas over the pipeline will be available for grazing.
4	Community Meeting, Modika	Will there be gas emissions from the pipeline?	Yusuf Asman	No. the pipeline is a closed system and therefore we do not expect any gaseous emission.
5	Community Meeting, Modika	What happens if the pipeline traverses land that is private?	Yusuf Abdi	The LCDA and the NLC will engage everyone and anyone whose land has been affected by the project on land acquisition. Any issues to deal with land will be dealt with and the community will be engaged in a forum like this on the acquisition process.
6	Community Meeting, Modika	What is the difference between the pipeline, roads and the other components?	Mohamed Abdi	The Lamu Port-South Sudan-Ethiopia-Transport (LAPSSET) Corridor project is a transport and infrastructure programme. The construction of LAPSSET's main components includes ports, pipelines, roads, railways and airports. The Pipeline construction

	Meeting	Issue/Question/Comments	Commentator	Response
				is just one of projects currently underway. The other projects in the programme will also have similar ESIA activities before constructions begin.
7	Community Meeting, Modika	Land in Garissa is mostly community owned and this ownership is not documented. We don't have faith in the county government to act on our best interests with regards to compensation of our lands.	Mohamed Abdi	Your comment is noted.
8	Community Meeting, Modika	There will be deforestation during construction along the pipeline. We recommend the protection of species such as the acacia. Acacia trees are an important source for fodder especially during the drought. They provide shades as well.	Abdulah Olow	The biodiversity Action Plan will recommend actions to conserve any endangered species. We will recommend rehabilitation of the cleared areas as well.
9	Community Meeting, Modika	What benefits can the community realize during construction?	Abdulah Olow	Pipeline construction is very technical and requires specialized training. Considerations will however be made for the employment of locals for positions that they qualify for. Other benefits during the construction phase such as supply of water may be realized. The community can also suggest CSR Projects for the proponent's consideration once project commences.
10	Community Meeting, Modika	We have had enough of these engagements to realize that this project will benefit us and we recommend that it commences as soon as possible. As a community however, we do not have a formal means of proving ownership of our lands since we do not have land title deeds. We ask	Mohamed,	Your comment is appreciated. Land issues will be dealt with by the NLC. Provisions of the community land Act spells out the process of acquisition of community and this will be followed by the NLC.

	Meeting	Issue/Question/Comments	Commentator	Response
		that this be given adequate consideration during the acquisition process.		

29.0 CLOSURE

All participants were thanked for their attendance and comments. The minutes of this meeting will be distributed, and your inputs will be appreciated to ensure that your issues were captured accurately. The meeting was closed by the Assistant Chief, Mr. Hussein

APPENDIX C

List of Attendees

APPENDIX B
Presentation



The Proposed Lokichar to Lamu Crude Oil Pipeline Project (LLCOP)

ADDENDUM FOR ONSHORE CRUDE OIL STORAGE AT LAMU PORT & GARISSA RE-ALIGNMENT

ESF CONSULTANTS

WELCOME AND INTRODUCTION

- Welcome
- Introductions

AGENDA

BASELINE STUDY MEETING: LOKICHAR TO LAMU CRUDE OIL PIPELINE PROJECT

1. Purpose of Meeting
2. Project Team
3. Project Status
4. Project Description
 - 4.1 Onshore Crude Oil storage Facility
5. ESIA Process
 - 5.1 ESIA Process Update
 - 5.2 ESIA Addendum Focus
6. Discussions
7. Way forward
8. Closure

1. PURPOSE OF MEETING

- Introduce the Proposed Lokichar to Lamu Crude Oil Pipeline Project and delivery teams.
- Provide an overview of the ESIA process to date.
- Discuss the proposed project variations on pipeline route alignment between station 11 and 12.
- Identify issues, comments and responses regarding the proposed project variations and associated approach.
- Indicate what will happen with the information.
- Indicate how stakeholders can participate in the future.

2. PROJECT TEAM

2.1 LAPSSET

The lead Government of Kenya organisation and leasor of land to the Pipeline.



2.2 PPMT

The Pipeline Project Management Team – consisting of the Governed of Kenya, Tullow Oil plc, Africa Oil Corporation and Total Oil.



2.3 ESIA CONSULTANT

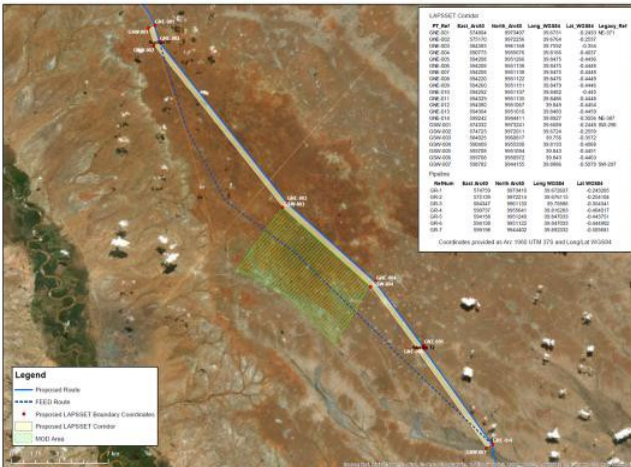
Golder Associates, an independent ESIA consultant selected by GoK-led tender process. ESF Consultants, a Kenya based environmental management consultant is the in country Kenyan component.



3. PROJECT STATUS

- Project design has been completed (Front-End Engineering Design or "FEED")
- All land for the pipeline (outside Turkana) has been Gazetted and all land surveyed by NLC except close to Ijara
- NLC is now starting engagement activities in Turkana in cooperation with County leadership
- ESIA submitted to NEMA (November 2019) but requires revision (by an "Addendum") to reflect design changes in Lamu and Garissa
- PPMT is undertaking work to identify suitable companies to bid to construct the pipeline
- The target remains to be in a position to make a final investment decision (FID) by the end of 2020
- So, no final decision has yet been made to proceed with the Project, but all the technical and permitting activities are being completed to support that

4. PROJECT ALTERNATIVE DESCRIPTION



5. ESIA PROCESS UPDATE

- LLCOP ESIA undertaken from March 2018 to October 2019
- Submission of ESIA report to NEMA done in November 2019
- Advertisement on National Dailies done in December 2019
- Variation undertaken in January 2020 due to confirmation of original route traversing through the Garissa military barracks.
- NEMA requests an Addendum study for affected areas.
- Addendum findings and mitigation measures to identified impacts to be presented to NEMA as Addendum to LLCOP ESIA.
- Notification to be undertaken after submission.
- Public review and comments
- NEMA review of LCOPP ESIA and Addendum.

6. ESIA ADDENDUM FOCUS

- Addendum study focuses on affected re-alignment area
- Stakeholder engagement exercise undertaken in affected area
- Engagement to focus on change in design and related elements
- All comments to be received and documented
- Record of engagement exercise to be shared with the stakeholders

7. DISCUSSION

- **Facilitated by Mr James Kambo.**
- **Please provide your name and surname.**
- **Focus on LLCOP variation scope.**
- **Land related issues addressed by NLC.**
- **Complete comments and registration sheet.**

CLOSURE



Proposed Lokichar to Lamu Crude Oil Pipeline Project: Addendum for Onshore Crude Oil Storage at Lamu Port & Garissa Re-alignment

*Garissa County Meeting: 11 March 2020 - Lantern Resort, Garissa Town,
Garissa County.*

Submitted to:

Pipeline Project Management Team

Submitted by:

ESF Consultants Ltd

WoodlandsOfficePark, 1CSuite1st Floor Woodlands Road, off Lenana Road. P O Box 7745-00100
Nairobi, Kenya

+254 736100205

11 March 2020

Distribution List

ESF Consultants Ltd - 1 copy pdf

PPMT - 1 copy pdf

Table of Contents

41.0 INTRODUCTION	4
2.0 ATTENDANCE	4
3.0 AGENDA	4
4.0 PURPOSE OF THE MEETING.....	4
5.0 PROJECT TEAM.....	5
6.0 PROJECT STATUS.....	5
7.0 ESIA PROCESS UPDATE.....	5
8.0 ESIA ADDENDUM FOCUS.....	6
9.0 IDENTIFICATION OF ISSUES.....	7
10.0 CLOSURE	17

TABLES

Table 1: Identified Issues, Questions, Comments and Responses	7
Table 2: List of Attendees.....	Error! Bookmark not defined.

APPENDICES

APPENDIX A
List of Attendees

APPENDIX B
Presentation

PURPOSE OF THIS DOCUMENT

This document represents the minutes taken during a public meeting convened as part of the Environmental Impact Assessment (ESIA) for the proposed Lokichar to Lamu Crude Oil Pipeline (LLCOP) project, Addendum report for the Onshore Crude Oil Storage Farm at the Lamu port and Garissa Re-alignment. The document presents a summary of the issues, concerns, questions, and suggestions raised by the stakeholders who attended the meeting. The meeting was held on Wednesday, 11 March 2020 at the Lantern Resort in Garissa County, Kenya.

The objectives of the meeting were to provide more information about the pipeline route re-alignment that occurred as result of the initial route passing through the Kenya Defence Force Barracks at Modikare, hence propose mitigation measures and to provide stakeholders with an opportunity to contribute comments and to raise issues of concern, questions and possible suggestions. Issues and questions raised during the meeting are captured in the Comment and Response Report that will form part of the Final ESIA Report that was submitted in NEMA in November 2019 for a decision.

Your comments are important!

Stakeholders who attended the meeting are invited to review the draft minutes and ensure that the questions, concerns and comments have been captured correctly. Please send any comments and changes that you would like to make within 14 days of receipt to the Public Participation Office.

Address for Comments:

Mr James Kambo

Stakeholder in-country lead (ESF Consultants)

Telephone

(+254) 736 100205

Email:

james.kambo@esfconsultants.org

Address

Woodlands Office Park,
1C Suite 1st Floor
Woodlands Road, off Lenana Road.
PO Box 7745-00100
Nairobi, Kenya

10.0 INTRODUCTION

The meeting started at 10.00 am and was chaired by Mr James Kambo who welcomed and thanked the guest for attending the meeting. He requested one of the guests to open the forum with a prayer.

Mr Kambo gave a briefing on the status of the LLCOP ESIA report, stating that it was submitted to NEMA in November 2019 and advertised in the National Dailies in December 2019 inviting the public to review the report and make comments. He added that this addendum report will form part of the LLCOP ESIA report which is currently under review by NEMA. He stated the purpose of the meeting was to capture issues, questions and concerns in relation to the pipeline route re-alignment in Modikare, Garissa County.

11.0 ATTENDANCE

Mr James Kambo requested the guests to introduce themselves.

Eighteen attendees signed the attendance register. The list of attendees is attached as Appendix A.

12.0 AGENDA

The following agenda was presented to, and accepted by the participants:

9. Purpose of Meeting
10. Project Team
11. Project Status
12. Project Description
 - 12.1. Garissa Route Re-alignment
13. Environmental and Social Impact Assessment (ESIA) Process
 - 13.1. ESIA Process Update
 - 13.2. ESIA Addendum Focus
14. Discussions
15. Way forward
16. Closure

13.0 PURPOSE OF THE MEETING

Mr James Kambo explained the purpose of the meeting as follows:

- Introduce the Proposed Lokichar to Lamu Crude Oil Pipeline Project and delivery teams.
- Provide an overview of the ESIA process to date.
- Discuss the proposed project variations on pipeline route realignment between station 11 and 12.
- Identify issues, comments and responses regarding the proposed project variations and associated approach.
- Indicate what will happen with the information.
- Indicate how stakeholders can participate in the future.

14.0 PROJECT TEAM

Mr Abdilatif Hussein introduced the project teams and explained the role each team plays in the LLCOP project as follows:

- The Government of Kenya – The Government of Kenya sets the strategy.
- LCDA - Authority responsible for the development of the LAPSSET Corridor.
- PPMT- Partnership between Government (Ministry of Mining and Petroleum- MoMP) and oil companies to develop the Pipeline Project; and
- Golder and ESF Consultants – Independent consultants, appointed to undertake the ESIA.

15.0 PROJECT STATUS

Miss Priscilla Kijizi presented an overview of the project status. She gave the following updates:

- ESIA study report for the proposed LLCOP was submitted to NEMA in November 2019 but requires an Addendum to reflect design changes in Lamu and Garissa County.
- All technical and permitting activities are being completed to support the LLCOP project
- Project design that is; Front-End Engineering Design (FEED) has been completed
- All land Outside Turkana County, for the pipeline has been Gazetted and Surveyed by NLC except areas close to Ijara in Garissa County
- PPMT is undertaking work to identify suitable companies to bid to construct the pipeline
- PPMT to make a final investment decision (FID) by the end of 2020.

16.0 ESIA PROCESS UPDATE

Mr Kambo gave an update of the ESIA for the LLCOP. He stated that the assessment begun in March 2018 and concluded in October 2019 and that all stakeholders were involved throughout the process. In November 2019, the final ESIA report was submitted to NEMA and advertised on National Dailies in December 2019 notifying the public to review the report and make comments.

He added that a meeting was held between Kenya Defense Forces (KDF) and LAPSSET Corridor Development Authority in early December 2019, it was informed by KDF that the gazette corridor crossed through a military area in Garissa and affected a portion of KDF land within the military area. A decision was made by LCDA in January 2020 to re-route the LLCOP corridor in order to avoid the military area. Two possible re-route options were identified; one north of the military area, and the other to the south. In coordination with the LCDA, the Pipeline Project Management Team accordingly redesigned the affected pipeline section and relocation of station 12 into the new alignment of the LAPSSET corridor, to the north of the military area. Subsequent to that NEMA requested an Addendum study to be undertaken on the affected areas and the findings and mitigation measures to the identified impacts be presented to NEMA as Addendum to LLCOP ESIA. Once the addendum has been submitted notification to be undertaken for public review and comments to be made.

17.0 ESIA ADDENDUM FOCUS

The ESIA Addendum will focus on the affected re-alignment areas and stakeholder engagement exercise will only be undertaken on the affected areas.

Stakeholder contributions collected during these engagements will be recorded and made publicly available in a Comment and Response Report for people to verify that their contributions have been recorded correctly.

Special efforts will be made to engage with potentially directly affected people including women, the youth, as well as local, regional and national educational and religious organisations, research institutions, NGOs, and other key organisations. Any queries and concerns can be raised at any time through the contacts provided.

18.0 IDENTIFICATION OF ISSUES

All questions, issues, comments and associated responses raised during the discussion session are captured in Table 1.

Date of meeting: 11 March 2020

Venue: Lantern Resort, Garissa Town, Garissa County.

Table 2: Identified Issues, Questions, Comments and Responses

	Meeting	Issue/Question/Comments	Commentator	Response
1	Lantern Resort, Garissa Township (11/03/2020), Garissa County	<ul style="list-style-type: none"> What do you mean when you say station 11 and station 12? 	Mary Wangui Mwangi Director Planning Garissa County Government	<ul style="list-style-type: none"> The Pipeline as designed has various stations along the route totalling to 17 above ground installation stations from all the way in Lokichar to Lamu. In between their various above ground installation station ranging from pumps, generators that will be used to provide electricity for heating the pipeline and pegging stations which will be used to check for any malfunctioning along the pipeline route. Hence, Station 11 consists of a block valve and switch gear in case of leakage it is where the movement operation will be shut down. Station 12 consist of a pig trap and a Grid connection.
2	Lantern Resort, Garissa Township (11/03/2020), Garissa County	<ul style="list-style-type: none"> Last time you mentioned that the station will consist mainly 	Abdi Haji Modika Green Unit	<ul style="list-style-type: none"> From the onset of this project the government has made

	Meeting	Issue/Question/Comments	Commentator	Response
		<p>generators and as a result of that operation emissions are going to be produced since they run on fuel. I hope this was captured in the ESIA report and that mitigation measures to reduce and minimize the emission produced were provided.</p>		<p>effort to ensure most of these areas are connected to the grid and have electricity. Hence, these generators will only be on standby and not run entirely to provide electricity to heat the pipeline since it will be connected to the grid and substation available in those areas. Consequently, this will reduce the amount of emission produced from the generators. Moreover, this aspect was captured, and recommendation was made in the ESIA report.</p>
3	Lantern Resort, Garissa Township (11/03/2020), Garissa County	<ul style="list-style-type: none"> • When will we get the coordinates for the gazetted corridor? and if are available could you share them. • Could you clarify what you mean when you say Upstream and Downstream. • How many stations will have to be powered by the fuel generators? 	Maryama Farah Natural Justice	<ul style="list-style-type: none"> • Abdilatif Response: The coordinates have been sent to the NLC as stipulated in the Constitution. We as LCDA sent the coordinates to the Ministry of Land where the Cabinet Secretary has to write a letter to the Chair at the National Land Commission to have them gazetted as per the Constitution. Hopefully by the end of this week the

	Meeting	Issue/Question/Comments	Commentator	Response
				<p>coordinates will be shared to the public and everyone can access and have the aligned coordinates for the pipeline corridor.</p> <ul style="list-style-type: none"> Upstream is where we are looking at the oil fields and where the actual oil extraction is conducted, while Midstream we do refer to the transportation corridor in this case the pipeline. On the stations to be powered by generators, we will need to confirm that since most of these areas are already to the National grid. However, in Garissa it will be towards the Isiolo-Garissa border at Benane and the other generator will be in Suguta.
4	Lantern Resort, Garissa Township (11/03/2020), Garissa County	<ul style="list-style-type: none"> Am of the opinion that you should have involved the county government officials e.g. the chief officers and CECs in the Department of Lands, so that you can communicate with them on the changes you have made or you will make in the future regarding the project. 	Aden Yunis Chairman of the Military Veteran	<ul style="list-style-type: none"> Abdilatif Response: We did invite the county government and we did meet up with the County Secretary this morning in his office. It is just that they are slightly committed elsewhere but do know that we sent out invitation and that all this information we usually come

	Meeting	Issue/Question/Comments	Commentator	Response
				<p>up with in terms of updates on the pipeline project we share them with the county government. Moreover , we as LCDA when we opened up a regional office in Garissa it is part of us trying to provide information to the host/local communities and county government because we have a new Constitution that stipulates processes and procedures that must be followed and adhered to for any project to be successful.</p>
5	Lantern Resort, Garissa Township (11/03/2020), Garissa County	<ul style="list-style-type: none"> My message is to the LAPSSET officials and the consultants, you should know that all land in Garissa County belong to the community. We are pastoralists who deal with livestock and we request LCDA to give us a forum for discussion to engage us since we are only few in this meeting and we can't represent all the whole pastoralist fraternity. 	<p>Abdimalik Muhamud Mohamed</p> <p>Physical Planner, Garissa County Government</p>	<ul style="list-style-type: none"> I do understand since we as LCDA being part of the National government have to sit down with the County government to discuss and find solutions because we need the land and you as the county government are holding the land in Trust to the community. We need to find a level ground so that we can get the support of local citizens through the county government. My colleague Mr. Omar who is the Regional Coordinator for Garissa

	Meeting	Issue/Question/Comments	Commentator	Response
				<p>County will need to organize a sit down between LAPSSSET management and the county government together with NLC so that we can be on the same ground and get to find positive solutions to some of these development challenges and land issues.</p>
6	Lantern Resort, Garissa Township (11/03/2020), Garissa County	<p>Why is that the land acquisition process and ESIA process held separately yet they corelate? Who will conduct the survey and land acquisition process and when will it take place? We need to know as the community who will be affected.</p>	<p>Habiba Fora Haki na Sheria</p>	<ul style="list-style-type: none"> Land acquisition process and social impact assessment process have been handled separately. The reason for that is because the government is the one responsible for acquiring the land for the LAPSSSET programmes to be implemented including projects such as railway, roads fibre optic, pipeline etc. Furthermore, the emphasis that have been placed in the ESIA report is not on the land acquisition since it is a separate process, but we have been looking for implication on livelihoods for the affected communities. For instance, how the pipeline project before construction

	Meeting	Issue/Question/Comments	Commentator	Response
				<p>works begin will affect livelihoods it being the first on site with an end to end development. Another thing to note is that the construction works will have an aggressive programme whereby you will see teams within a specific location for a very short duration (i.e. 1km-2km per day during installation), to manage interaction with wildlife, livestock and locals.</p> <ul style="list-style-type: none"> Abdilatif Response: What we have done previously as LCDA is that we have worked with the County Commissioner office and the County government so that we can have information trickle down all the way to chiefs and Admins so that they can let people know that there are teams that will be coming on certain dates, so that those who have interest in specific areas can be present in those forums.
7	Lantern Resort, Garissa Township (11/03/2020), Garissa County	<ul style="list-style-type: none"> I want to know how this project will handle environmental and natural resource management 	Hassan Sheikh Ali Alwale Wildlife Community	<ul style="list-style-type: none"> For the pipeline project we conducted an ESIA study for both the potential positive and

	Meeting	Issue/Question/Comments	Commentator	Response
		<p>and whether LAPSSET has made steps to protect and restore it.</p>		<p>negative impacts of the project. It looked at various aspects including human life, safety, biological diversity both terrestrial and marine life, social integration and cohesiveness, community health, Impact on physical infrastructure, soil water, geology, air quality etc. We recommended a set of mitigation measures which we presented last year in the six counties where the pipeline will be passing. Additionally, there will be subsequent assignments to develop plans for specific segments of development e.g. THE EPC contract has to develop a plan to demonstrate how the construction works will be undertaken and how the movements of materials will be handle to manage impacts which will have to get an approval from NEMA.</p> <ul style="list-style-type: none"> Abdilatif Response: from 2015 to 2017 LAPSSET outsourced services for Strategic Environmental

	Meeting	Issue/Question/Comments	Commentator	Response
				<p>Assessment to be conducted where the consultants looked at all the physical infrastructure and components of the corridor. From that we get to understand some of the ecologically sensitive areas, which has helped us in some of the Master Plans we are developing and Planning programmes we are doing.</p>
8	Lantern Resort, Garissa Township (11/03/2020), Garissa County	<ul style="list-style-type: none"> How many stations will be in Garissa County? How far are they going to be from Garissa town and How have you factored in the security aspects of these stations? 	Fatuma Mohammed Social Service Department Garissa County Government	<ul style="list-style-type: none"> There will be six stations in Garissa. The Front-End Engineering Design study was conducted by a set of teams made up of geologists and engineers who for the past two years undertook a survey to find the optimal route for the pipeline to pass. The stations on the other hand are going to be placed along the route as per the design and functionality of the pipeline. Therefore, the project will respond by looking around to see how it will ensure the above ground installation stations are going to be secured. Do note that

	Meeting	Issue/Question/Comments	Commentator	Response
				<p>some of the stations will be manned and there is an elaborate security plan which the pipeline team has been working on. They have been holding engagements with some companies from Israel to look at the security systems and give recommendations and proposals. Currently a lot is being looked at in terms of security of the pipeline infrastructure.</p>
9	Lantern Resort, Garissa Township (11/03/2020), Garissa County	<ul style="list-style-type: none"> • What is the long-term effect of subterranean heating on the plant species that will need to germinate? Will the plants be able to germinate in this heated condition? • What will be the degree of heat to be used in heating the pipeline & how much of the heat will be dissipated? 	Maryama Farah Natural Justice	<ul style="list-style-type: none"> • As per the design that was provided, there will be almost no material change in the soil temperature between the pipeline and soil environment. Furthermore, the pipeline will be buried at a minimum depth of 1meter and it will be covered with a cast made of polyurethane to prevent heat loss. Hence wouldn't affect the growth of plants. • As per the specificity of the degree of heat that will be dissipated from the pipeline, I will confirm that from the

	Meeting	Issue/Question/Comments	Commentator	Response
10	Lantern Resort, Garissa Township (11/03/2020), Garissa County	<ul style="list-style-type: none"> How do you value the Acacia trees? How will you compensate for these trees and exotic plants that will be destroyed to pave way for the construction of the pipeline? 	Hussein Sheihk Ali Alwale Wildlife Community	biodiversity team and get back to you. <ul style="list-style-type: none"> The project will try as much to avoid socio-cultural areas and trees that are of value to the communities. There is a provision that has been made to micro-route during the pipeline installation in order to avoid such places of cultural value. Additionally, there will be set of teams that will go to the communities and hold engagements before construction works begin. There will also be restoration programmes that will focus on affected communities.

19.0 CLOSURE

All participants were thanked for their attendance and comments. The minutes of this meeting will be distributed, and your inputs will be appreciated to ensure that your issues were captured accurately. The meeting was closed by Deputy County Commissioner Mr Samuel Njuguna.



ESF Consultants
Environmental Management Consultants

APPENDIX B

List of Attendees



PROJECT TITLE		LLCOP ESIA ADDENDUM					
VENUE		LANTERN RESORT, GARISSA COUNTY					
MEETING		ESIA ADDENDUM					
DATE		11/03/2020					
No.	NAME OF STAKEHOLDER		DESIGNATION.	ORGANIZATION.	PHONE.	EMAIL.	SIGNATURE.
	FIRST NAMES.	SURNAME.					
1	ABDIKATIF	MUSSEIN	PROGRAMME OFFICER	LAPSS/EF	0720989315	abussein@lapssnet.go.ke	
2	Miscilla	Kijzi	ESIA Advisor	PPMT	0705087394	miscilla.kijzi@gmail.com	
3	Omar	TAWANO	Regional Mgr	Lapssnet	0725799886	otawano@lapssnet.go.ke	
x	Maryama Rach	Maryama	Program Lead	Natural Justice	0722222222	maryama@naturaljustice.org	
5	Mary Wangari	Mwangari	Dir. Planning	CGC	0722400236	mwangariwangari@gmail.com	
x	ABDIKATIF MUHAMMAD	MOHAMMAD	Physical Planner	CGC	0720523247	malawmedya@gmail.com	
7	Muhammad Hassan	Muhammad	Administrative	CGC	072473737	Muhammadhassan@gmail.com	
x	Aden A. Jones	JONES	GMVC	CG	0720828510	adenwadhup@gmail.com	
x	Abdi HASSAN	SULMAN	GMVC	CGC	0702145005	garnhanapp@harambee.org	
10	MATUMA MOHAMMAD	MUHAMMAD	ADMIN	LAPSS/EF	0722622642	matumah@lapssnet.go.ke	
11	Ahmed M. Asa	MUHAMMAD	Director Gen	County	0722852930	ahmedabdi088@gmail.com	
12	Habiba	Fara	HCI-P-O	HCI	070506719	habiba@hakinahena.org	
13	Abdirahim Farah	FARAH	Farmer	Kayunga	0722967758	abdirahimfarah@gmail.com	
x	HASSAN SHEIKH ALI	HASSAN	Hajjago Wada	GC	072059899	hassan@hajjago.com	
x	Mussei H. Mw	MUSSEIN	Police	POLICE	0726718223	musseyan@gmail.com	
16	SAMUEL A. MUKHARI	SAMUEL	DCC	MEMOR	071110041	gmsed@neteye.co.ke	
17							
18							
19							
20							
21							
22							
23							
24							
25							



PROJECT TITLE		LLCOP ESIA ADDENDUM					
VENUE		LANTERN RESORT, GARISSA COUNTY					
MEETING		ESIA ADDENDUM					
DATE		11/03/2020					
No.	NAME OF STAKEHOLDER		DESIGNATION.	ORGANIZATION.	PHONE.	EMAIL.	SIGNATURE.
	FIRST NAMES.	SURNAME.					
1	DOMINIC	MUTURI	SURVEYOR	S.O.K	0724366711	ireridominic@yahoo.co	
2	FARUKA	Mohamed	Social work	CSA county	0722466531	FarukaMoh46@gmail	
3							
4							
5							
6							
7							
8							
9							
10							
11							
12							
13							
14							
15							
16							
17							
18							
19							
20							
21							
22							
23							
24							
25							



PROJECT TITLE		LLCOP ESIA ADDENDUM					
VENUE		MADIKKA CHIEF'S OFFICE					
MEETING		COMMUNITY MEETING.					
DATE		11/03/2020					
No.	NAME OF STAKEHOLDER		DESIGNATION.	ORGANIZATION.	PHONE.	EMAIL.	SIGNATURE.
	FIRST NAMES.	SURNAME.					
1	HUSSEIN A ISHAK		ASI-chief		0724371757		
2	ABDULMI OLOW				0723519253		
3	ALI DIKA ABDUBA		TEACHER		0711914822		
4	YUSSUF OSMAN		Youth.		072210896		
5	Mohammed ABDULMI				072967226		
6	GHAM GORE						
7	TALIFE BARIE						
8	RAGE HASSAN						
9	YUSSUF ABDI				0720695408		
10	Mohamed Aden						
11	Omar Ali Abdirahma				0719443465		
12	Noor Buneit Lulus				0725176368		
13							
14							
15							
16							
17							
18							
19							
20							
21							
22							
23							
24							
25							

APPENDIX B

Presentation



The Proposed Lokichar to Lamu Crude Oil Pipeline Project (LLCOP)

ADDENDUM FOR ONSHORE CRUDE OIL STORAGE AT LAMU PORT & GARISSA RE-ALIGNMENT

ESF CONSULTANTS

WELCOME AND INTRODUCTION

- Welcome
- Introductions

AGENDA

BASELINE STUDY MEETING: LOKICHAR TO LAMU CRUDE OIL PIPELINE PROJECT

1. Purpose of Meeting
2. Project Team
3. Project Status
4. Project Description
 - 4.1 Onshore Crude Oil storage Facility
5. ESIA Process
 - 5.1 ESIA Process Update
 - 5.2 ESIA Addendum Focus
6. Discussions
7. Way forward
8. Closure

1. PURPOSE OF MEETING

- Introduce the Proposed Lokichar to Lamu Crude Oil Pipeline Project and delivery teams.
- Provide an overview of the ESIA process to date.
- Discuss the proposed project variations on pipeline route alignment between station 11 and 12.
- Identify issues, comments and responses regarding the proposed project variations and associated approach.
- Indicate what will happen with the information.
- Indicate how stakeholders can participate in the future.

2. PROJECT TEAM

2.1 LAPSSET

The lead Government of Kenya organisation and leasor of land to the Pipeline.



2.2 PPMT

The Pipeline Project Management Team – consisting of the Governed of Kenya, Tullow Oil plc, Africa Oil Corporation and Total Oil.



2.3 ESIA CONSULTANT

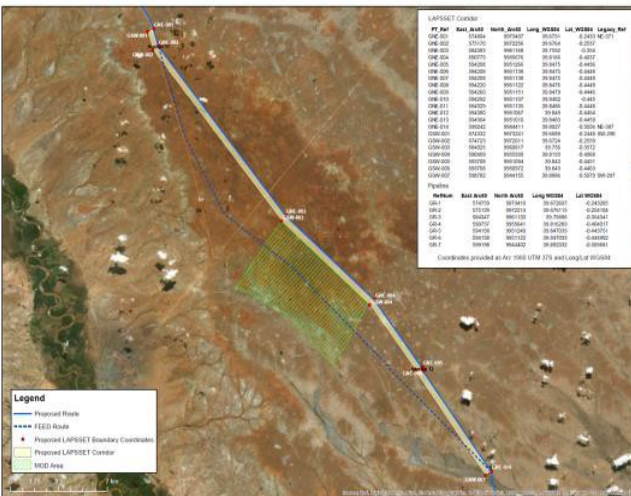
Golder Associates, an independent ESIA consultant selected by GoK-led tender process. ESF Consultants, a Kenya based environmental management consultant is the in country Kenyan component.



3. PROJECT STATUS

- Project design has been completed (Front-End Engineering Design or “FEED”)
- All land for the pipeline (outside Turkana) has been Gazetted and all land surveyed by NLC except close to Ijara
- NLC is now starting engagement activities in Turkana in cooperation with County leadership
- ESIA submitted to NEMA (November 2019) but requires revision (by an “Addendum”) to reflect design changes in Lamu and Garissa
- PPMT is undertaking work to identify suitable companies to bid to construct the pipeline
- The target remains to be in a position to make a final investment decision (FID) by the end of 2020
- So, no final decision has yet been made to proceed with the Project, but all the technical and permitting activities are being completed to support that

4. PROJECT ALTERNATIVE DESCRIPTION



5. ESIA PROCESS UPDATE

- LLCOP ESIA undertaken from March 2018 to October 2019
- Submission of ESIA report to NEMA done n November 2019
- Advertisement on National Dailies done in December 2019
- Variation undertaken in January 2020 due to confirmation of original route traversing through the Garissa military barracks.
- NEMA requests an Addendum study for affected areas.
- Addendum findings and mitigation measures to identified impacts to be presented to NEMA as Addendum to LLCOP ESIA.
- Notification to be undertaken after submission.
- Public review and comments
- NEMA review of LCOPP ESIA and Addendum.

6. ESIA ADDENDUM FOCUS

- Addendum study focuses on affected re-alignment area
- Stakeholder engagement exercise undertaken in affected area
- Engagement to focus on change in design and related elements
- All comments to be received and documented
- Record of engagement exercise to be shared with the stakeholders

7. DISCUSSION

- **Facilitated by Mr James Kambo.**
- **Please provide your name and surname.**
- **Focus on LLCOP variation scope.**
- **Land related issues addressed by NLC.**
- **Complete comments and registration sheet.**

CLOSURE