
MINUTES

**Proposed Lokichar to Lamu Crude Oil Pipeline Project:
Addendum for Onshore Crude Oil Storage at Lamu Port**

*Lamu County Meeting: 09 March 2020 - KEFRI Conference Hall, Mokowe,
Lamu.*

Submitted to:

Pipeline Project Management Team

Submitted by:

ESF Consultants Ltd

WoodlandsOfficePark, 1CSuite1st Floor Woodlands Road, off Lenana Road. P O Box 7745-00100
Nairobi, Kenya

+254 736100205

09 March 2020

Distribution List

ESF Consultants Ltd - 1 copy pdf

PPMT - 1 copy pdf

Table of Contents

1.0 INTRODUCTION	4
2.0 ATTENDANCE	4
3.0 AGENDA	4
4.0 PURPOSE OF THE MEETING.....	4
5.0 PROJECT TEAM.....	5
6.0 PROJECT STATUS.....	5
7.0 ESIA PROCESS UPDATE.....	5
8.0 ESIA ADDENDUM FOCUS.....	6
9.0 IDENTIFICATION OF ISSUES.....	7

TABLES

Table 1: Identified Issues, Questions, Comments and Responses	7
Table 2: List of Attendees.....	Error! Bookmark not defined.

APPENDICES

APPENDIX A
List of Attendees

APPENDIX B
Presentation

PURPOSE OF THIS DOCUMENT

This document represents the minutes taken during a public meeting convened as part of the Environmental Impact Assessment (ESIA) for the proposed Lokichar to Lamu Crude Oil Pipeline (LLCOP) project, Addendum report for the Onshore Crude Oil Storage Farm at the Lamu port in Kenya. The document presents a summary of the issues, concerns, questions, and suggestions raised by the stakeholders who attended the meeting. The meeting was held on Monday, 09 March 2020 at the KEFRI Conference Hall in Mokowe Lamu, Kenya.

The objectives of the meeting were to provide more information about the proposed Onshore Crude Oil Storage Farm and proposed mitigation measures and to provide stakeholders with an opportunity to contribute comments and to raise issues of concern, questions and possible suggestions. Issues and questions raised during the meeting are captured in the Comment and Response Report that will form part of the Final ESIA Report that was submitted in NEMA in November 2019 for a decision.

Your comments are important!

Stakeholders who attended the meeting are invited to review the draft minutes and ensure that the questions, concerns and comments have been captured correctly. Please send any comments and changes that you would like to make within 14 days of receipt to the Public Participation Office.

Address for Comments:

Mr James Kambo

Stakeholder in-country lead (ESF Consultants)

Telephone

(+254) 736 100205

Email:

james.kambo@esfconsultants.org

Address

Woodlands Office Park,
1C Suite 1st Floor
Woodlands Road, off Lenana Road.
PO Box 7745-00100
Nairobi, Kenya

1.0 INTRODUCTION

The meeting started at 10.00 am and was chaired by Mr, James Kambo who welcomed and thanked the guest for attending the meeting. He invited Mr Irungu Macharia, the county commissioner to open the forum with welcoming remarks.

Mr Kambo gave a briefing on the status of the LLCOP ESIA report, stating that it was submitted to NEMA in November 2019 and advertised in the National Dailies in December 2019 inviting the public to review the report and make comments. He added that this addendum report will form part of the LLCOP ESIA report which is currently under review by NEMA. He stated the purpose of the meeting was to capture issues, questions and concerns in relation to the proposed Onshore Storage Farm for the Crude oil at the Lamu Port. This presentation included updated information on the project design for the storage tank farm.

2.0 ATTENDANCE

Mr James Kambo requested the guests to introduce themselves.

Sixty-nine attendees signed the attendance register. The list of attendees is attached as Appendix A.

3.0 AGENDA

The following agenda was presented to, and accepted by the participants:

1. Purpose of Meeting
2. Project Team
3. Project Status
4. Project Description
 - 4.1. Onshore Crude Oil Storage Facility
5. Environmental and Social Impact Assessment (ESIA) Process
 - 5.1. ESIA Process Update
 - 5.2. ESIA Addendum Focus
6. Discussions
7. Way forward
8. Closure

4.0 PURPOSE OF THE MEETING

Mr James Kambo explained the purpose of the meeting as follows:

- Introduce the Proposed Lokichar to Lamu Crude Oil Pipeline Project and delivery teams.
- Provide an overview of the ESIA process to date.
- Discuss the proposed project variations on crude oil storage at Lamu Port.

- Identify issues, comments and responses regarding the proposed project variations and associated approach.
- Indicate what will happen with the information.
- Indicate how stakeholders can participate in the future.

5.0 PROJECT TEAM

Mr Abdilatif Hussein introduced the project teams and explained the role each team plays in the LLCOP project as follows:

- The Government of Kenya – The Government of Kenya sets the strategy.
- LCDA - Authority responsible for the development of the LAPSSET Corridor.
- PPMT- Partnership between Government (Ministry of Mining and Petroleum- MoMP) and oil companies to develop the Pipeline Project; and
- Golder and ESF Consultants – Independent consultants, appointed to undertake the ESIA.

6.0 PROJECT STATUS

Miss Priscilla Kjizi presented an overview of the project status. She gave the following updates:

- ESIA study report for the proposed LLCOP was submitted to NEMA in November 2019 but requires an Addendum to reflect design changes in Lamu and Garissa County.
- All technical and permitting activities are being completed to support the LLCOP project
- Project design that is; Front-End Engineering Design (FEED) has been completed
- All land Outside Turkana County, for the pipeline has been Gazetted and Surveyed by NLC except areas close to Ijara in Garissa County
- PPMT is undertaking work to identify suitable companies to bid to construct the pipeline
- PPMT to make a final investment decision (FID) by the end of 2020.

7.0 ESIA PROCESS UPDATE

Mr Kambo gave an update of the ESIA for the LLCOP. He stated that the assessment begun in March 2018 and concluded in October 2019 and that all stakeholders were involved throughout the process. In November 2019, the final ESIA report was submitted to NEMA and advertised on National Dailies in December 2019 notifying the public to review the report.

The Pipeline Steering Committee gave a directive in December 2019 for variation to be undertaken on the crude oil storage at Lamu Port from offshore Floating storage to an onshore storage tank farm. Subsequent to that NEMA requested an Addendum study to be undertaken on the affected areas and the findings and mitigation measures to the identified impacts be presented to NEMA as Addendum to LLCOP ESIA. Once

the addendum has been submitted notification to be undertaken for public review and comments to be made.

8.0 ESIA ADDENDUM FOCUS

The ESIA Addendum will focus on the affected areas and stakeholder engagement exercise will only be undertaken on the affected areas. Engagement will focus on change in variation of the Storage tank design and related elements from Onshore to an Offshore storage tank farm.

Stakeholder contributions collected during these engagements will be recorded and made publicly available in a Comment and Response Report for people to verify that their contributions have been recorded correctly.

Special efforts will be made to engage with potentially directly affected people including women, the youth, as well as local, regional and national educational and religious organisations, research institutions, NGOs, and other key organisations. Any queries and concerns can be raised at any time through the contacts provided.

9.0 IDENTIFICATION OF ISSUES

All questions, issues, comments and associated responses raised during the discussion session are captured in Table 1.

Date of meeting: 09 March 2020

Venue: KEFRI Conference Hall, Mokowe, Lamu County.

Table 1: Identified Issues, Questions, Comments and Responses

	Meeting	Issue/Question/Comments	Commentator	Response
1	Lamu County Meeting (09/03/20), KEFRI Conference Hall, Mokowe	<p>I want to thank ESF Consultants for the work well done in carry out the assessments and ensuring that they engage us throughout the process. Secondly, I want to thank the county commissioner for standing with us on this Pipeline project, you came to kililana and stated that you will be attending all the meetings and today you stood by your words and you're present, we acknowledge and appreciate your efforts.</p> <p>However, these are the concerns and questions I would want raise:</p> <ul style="list-style-type: none"> • What will be the final piece of land that will be acquired by NLC for this project? Is it 200metres or 600metres as you stated previous? Clarify on this matter. • Let the government know we won't fight them because we want development in Kiilana. We only want transparency from the government and request to be told the truth. We don't want force to be used on us when acquiring the land we want the due process to be followed and respect to be uphold and fairness during the land acquisition process. 	<p>Rajab Mohamed</p> <p>Kililana farmers Association</p>	<ul style="list-style-type: none"> • The land that will be acquired for the storage tank farm will be 500m x 670m which is approximately 32 hectares. The design of the storage tanks has the capacity to hold 500,000 barrel of oil each and the farm has a space for building an extra 4th tank. The storage tanks will have an insulating cover similar to that of the pipeline and will be heated to maintain the crude oil in liquid state. Additionally, the storage tank will have a floating cover that will enable one to depict the level of oil in the tank. Each tank will have a containment band that will prevent oil from spilling off in case of leakage.
2	Lamu County Meeting (09/03/20), KEFRI Conference Hall, Mokowe	<ul style="list-style-type: none"> • You mentioned that report was submitted to NEMA, therefore I would 	<p>Abubakar Mohamed Ali</p> <p>Chairman Save Lamu</p>	<ul style="list-style-type: none"> • Due process will be followed to the letter, that is why we are here to

	Meeting	Issue/Question/Comments	Commentator	Response
		<p>request for Public participation to be organized for community members to give their comments before the license is issued so that we look at the impacts and mitigation measures proposed since the environment we depend on for our livelihoods will be affected.</p> <ul style="list-style-type: none"> • Let us ensure that the health and Safety of biodiversity including marine and terrestrial ecosystem is considered especially during an occurrence of an oil spill, which will result to livelihoods being affected including pastoralists, fishermen, hunters and gatherers and among others along the pipeline corridor. • Displacement of communities along the pipeline corridor and resettlement plan/compensation be looked into and taken seriously because a lot of people will be affected. • There should be a mechanism in place to resolve conflicts and grievances that may arise. Let the government know that we as Save Lamu we have won cases against them due to failure of the government from following due law process. Let them know that we want development that are sustainable. 		<p>solve and address any issue that may arise later which we may have overlooked. Additionally, the report that was submitted to NEMA for review has stalled in order for the ADDENDUM assessment to be completed so that the review resumes. Once the addendum report has been submitted to NEMA the notice will be put up on the National dailies to enable the public to review and give comments. The report will be available on the NEMA and LAPSET website for access to the public.</p> <ul style="list-style-type: none"> • On the impacts to the environment, we have been constantly engaging with stakeholders from the onset in 2018 up to last year when we presented the impacts identified and mitigation measures proposed to the stakeholders, in every county where the pipeline will pass for them to give suggestion and better solution that will enable the project to have minimal impacts to the environment. Currently we are here discussing the impacts of the proposed storage of the crude oil from the offshore storage to onshore storage tank farm. We are here to take all the comments

	Meeting	Issue/Question/Comments	Commentator	Response
				and suggestion from the stakeholders. Additionally, the ESMP has a provision for Grievance redress. And Resettlement Action Plan.
3	Lamu County Meeting (09/03/20), KEFRI Conference Hall, Mokowe	<ul style="list-style-type: none"> From the LAPSSET Master Plan it had indicated that the area where the storage tanks will be placed in kililana is going to be a Special Economic Zone for business, how does it correlate with the environmental team? Do clarify. How are we going to benefit from these port Project and the special Economic Zone as people of Kililana? Are we going to be part of the PPP or investors since we are going to hand over our lands or we are going to be given money as compensation to evacuate the area? 	Rajab Mohamed Kililana farmers Association	<ul style="list-style-type: none"> The special economic zone according to the Master plan falls slightly behind the storage tank farm which currently forms part of the Lamu port. Currently LAPSSET has partnered with African Development Bank to explain and help LAPSSET to determine the growth and development of the Special Economic Zone which falls behind the Port Area. There is a bill that allows for various forms of compensation to be adopted including land for land, Shares to be owned or acquisition of government bonds. Hence, depending on what is ideal you will most definitely benefit from the projects and the compulsory land acquisition will be dealt with by NLC and will follow due process of law
4	Lamu County Meeting (09/03/20), KEFRI Conference Hall, Mokowe	<ul style="list-style-type: none"> We are glad that you called us here in an organised manner and ensured it was inclusive since we can see all key stakeholders present including 	Zipporah Cherunya Kililana Resident	<ul style="list-style-type: none"> NEMA is where the ESIA reports are delivered for license to be issued and if you want the ESIA report for perusal kindly visit the NEMA office in

	Meeting	Issue/Question/Comments	Commentator	Response
		<p>government official, NGOs such as Save Lamu, affected persons including kililana residents among other representatives.</p> <ul style="list-style-type: none"> • Where is the ESIA report so that we also go through it and give our comments? • Give us the correct report and Maps that include the specific area where the storage tanks will be placed so that we can inform our people that the storage has changed from offshore to Onshore. • We will be glad to know the type of relationship you have with the government for instance, how do you relate or deal with the Ministry of Energy and Ministry of Trade? Since most of the questions we are asking today can only be responded or dealt with by the respective ministries. We know for a fact you don't represent them and the representative we have today from the government wouldn't be able to give us the correct answers. So, let the government know that we are looking forward to when will get those representatives from the various ministries so that we get our question answered. • The engagements we are having today consist of us sharing our concerns regarding the project and associated impacts, how do you intend to respond 		<p>Lamu and you get the accorded assistance. Additionally, the report is on the LAPSSSET and NEMA website you can access it for your own perusal.</p> <ul style="list-style-type: none"> • On the issue of getting the correct information and being satisfied with the feedback, we always document the minutes of the meetings we have held and are often attached to the main ESIA report, which you can look it up from NEMA in their portal. Do note that we capture all the minutes for every meeting we have hosted. • On the representation of government ministries, do note that ESF hasn't been given the mandate to talk on behalf of or represent the Ministry of Energy or Trade, but the government is present in this meeting so they should take note of that because it is important since it falls under the local Content Building and development. • The Master plan has a lot of proposed projects to be implemented, hence the location for the storage farm was what was seen to be ideal for that space. The reason we are here today is to give you accurate information and for you to seek clarification or raise any concern you

	Meeting	Issue/Question/Comments	Commentator	Response
		<p>to our question apart from giving us direct answers today since it will just end here and we want the information to remain with us, do clarify so that we can be satisfied with the response.</p> <ul style="list-style-type: none"> • How are we going to benefit from the oil shares? I know you want to acquire our land and compensate us with the government valuation, but I would suggest being compensated according to the world standard valuation. • We really need to know and understand the issues and concern on investment because we are going to find ourselves being bought out by the government and we will see investors on our own land making money and we may not be able to claim a penny. Let it be known that we want to have shares on this private investment including LAPSSET projects. • We have been requesting LAPSSET to open an office in Lamu, but it hasn't been forthcoming, this needs to be done so that we deal with them directly other than being referred to offices in Nairobi. Mr Abdilatif do take note of that. 		<p>have regarding the proposed storage tank farm. Currently we have LAPSSET offices situated at the Lamu port however, we have noted your concern and we are actually looking forward towards opening an office at the main land so that we become accessible to people on the ground so that you can get your issues and grievances addressed.</p> <ul style="list-style-type: none"> • On matters of compensation and benefits that will accrue from the project, there is a bill that allows for various forms of compensation to be adopted including land for land, Shares to be owned or acquisition of government bonds. Hence, depending on what is ideal you will most definitely benefit from the projects. The compulsory land acquisition will be dealt with by NLC and will follow due process of law
5	Lamu County Meeting (09/03/20), KEFRI Conference Hall, Mokowe	<ul style="list-style-type: none"> • I will request that you ensure there is transparency especially when you are coming to engage with the local 	Mwaniki Nicholas Hindi MCA representatives	We have been transparent from onset since May 2018 when we began the ESIA study. We always come here to talk about the project and give you updates on proposed pipeline project from Lokichar to here in Lamu, including

	Meeting	Issue/Question/Comments	Commentator	Response
		<p>stakeholders so that they don't lose it all and get hurt later in the future after the projects have been implemented but rather be among those who will benefit from these proposed projects.</p>		<p>today's meeting where we are focusing on the change in variation for the storage of the crude oil from the Offshore to Onshore storage tank farm.</p>
6	<p>Lamu County Meeting (09/03/20), KEFRI Conference Hall, Mokowe</p>	<ul style="list-style-type: none"> I want to address this to Mr. Abdilatif that he should know we are familiar with the land Index Valuation Act, and it is sad to know that he thinks it is a good solution to our land issue yet, we as residents of Lamu are lamenting the passing of such Act. The Act failed to grant a fair and just compensation to our people. One of the amendments that were done in the compulsory land acquisition stated that NLC will acquire your land and take approximately one year before you receive the compensation. Meanwhile the affected persons will continue to languish in poverty and remain jobless with no place to go still awaiting to be compensated by the government. Regardless of you taking the them to court and having a complain the projects will continue. Where will we get the technical ESIA report? and can you make it available in the next meeting that you will host, and 	<p>Zeinab Ghadhamfar Community Environmental Legal Officer – Save Lamu</p>	<ul style="list-style-type: none"> I wouldn't want us to deviate from the main focus which is to talk about the change in storage of crude oil from Onshore to Offshore storage tank farm. However, I would state that your comments have been recorded and they will be forwarded to NLC who will address them and I believe they will have a similar forum like this which you can raise your issue and get it resolved by them. Additionally note that we have been asked to do a variation on the Addendum and once it is ready we will send it back to NEMA where they will reissue an advertisement on the National Dailies that a report on LLCOP is available for public review and comments to be made. NEMA will follow due process and give 30 to 60 days where after that they will have consultations in every county to discuss the report and its findings and take comments on what the ESIA report contains.

	Meeting	Issue/Question/Comments	Commentator	Response
		<p>have it translated in Kiswahili for audience that don't understand English?</p>		<ul style="list-style-type: none"> On where to access the report, there is a link in the LAPSSET website which you can access and get the technical report. Similarly, you can go to the NEMA portal and get the report. In the meantime, nothing stops NEMA from receiving comments on any aspect regarding the LLCOP report. This addendum will add to the main report and will then be re-advertised for public review.
7	Lamu County Meeting (09/03/20), KEFRI Conference Hall, Mokowe	<ul style="list-style-type: none"> The pipeline will pass below the ground so how will you manage leakage? If you have a mechanism in place, I will request you take our youths and train them on how to respond to oil leakage so that the response is fast to prevent damage to the environment. How will those who will be affected by the project especially during leakage and they live outside the pipeline corridor get compensated? Since a similar incident occurred with the pipeline transporting oil in Mombasa that burst and during containment, one the affected farmers was locked out from accessing his farm. 	Osman Guliya Hussein Mokowe Resident	<ul style="list-style-type: none"> On pipeline leakage we did present the proposed mitigation measures in a workshop that was held here last year. Just to clarify the crude oil once exposed to room temperature solidifies and looks like shoe polish. Hence it is easy to contain and manage leakage. There are measures that were proposed to control and detect leakage during occurrence and formed part of the design of the pipeline throughout the corridor.
8	Lamu County Meeting (09/03/20), KEFRI Conference Hall, Mokowe	<ul style="list-style-type: none"> Why is it that livestock herders are being left out in the compensation discussions 	Omar Muhumed	<ul style="list-style-type: none"> CSRs and compensation will be dealt with by LAPSSET who have set out

	Meeting	Issue/Question/Comments	Commentator	Response
		<p>for these projects and yet our water pans lie within the pipeline corridor?</p> <ul style="list-style-type: none"> • What kind of CSRs are you planning to bring to Lamu other than building roads and giving people money as form of compensation? Why don't you build schools, university, water boreholes among others other than giving small compensation money that aren't sustainable? 	<p>Chairman Livestock keepers</p>	<p>groups that will meet up with herders to understand their livelihoods and considered during compensation process. Additionally, last year when we were conducting social baseline study, we did collect social data on livestock herders, from jipe, bodhei, boni, bargoni heading all the way to Garissa and even in all the counties where the pipeline will pass. The data was put in the report. and the information collected will inform the livelihood restoration plan and compensation process.</p> <ul style="list-style-type: none"> • Abdilatif- Do note that the livestock keepers haven't been left out in the compensation process. We did carry out a survey last year in December looking at the livestock herders, beekeeper, fishermen, farmers etc to understand their livelihoods from Bodhei heading all the way to Garissa. We are currently, waiting for the valuation report to be released so that the livestock keepers can be compensated. Kindly give us more time so that all the suggestion that were proposed in the report we will look at them and consider them so that you get adequately compensated.

	Meeting	Issue/Question/Comments	Commentator	Response
9	Lamu County Meeting (09/03/20), KEFRI Conference Hall, Mokowe	<ul style="list-style-type: none"> We are happy to be called here today for this engagement including involving the residents of Hindi since it is a central place where all livelihoods exist. We are grateful to know that 400 students are in school and have benefited from these LAPSSET projects and I would suggest that they also get employment opportunities in these projects. We want all the projects to be brought here and we are glad that you have consulted us today and we request that you continue engaging with the local communities so that you also get to know who hasn't received compensation. We are happy to see both the central and county government present in this meeting. 	Ibrahim Mohamed Masno BMU - Mokowe	Your comments have been well received
10	Lamu County Meeting (09/03/20), KEFRI Conference Hall, Mokowe	<ul style="list-style-type: none"> I want to thank the pipeline oil project team since it is opening these areas to development. My concern is on water resource since we don't have enough clean water and we have few boreholes, in occurrence of a pipeline burst we are concerned that the waters will be affected kindly look into that. I suggest that compensation shouldn't take one year because we as residents 	Joseph Waruhiu Water catchment Resource Chairman	Your comments have been well received, and on oil spillage just as I mentioned previously there is a contingency plan in place that will take care and handle leakage in the unfortunate occurrence of such an event.

	Meeting	Issue/Question/Comments	Commentator	Response
		<p>are already vulnerable but rather it should be done earlier before people evacuate the land.</p> <ul style="list-style-type: none"> • There are people also don't own land in Lamu but live in those areas, let them also be called to this meeting and participate because they will eventually be affected by this project including the livestock keepers. 		
11	Lamu County Meeting (09/03/20), KEFRI Conference Hall, Mokowe	<ul style="list-style-type: none"> • I want to thank the County Commissioner for attending this meeting he has kept his promise and has shown his commitment to helping his work. • On the storage tank farm, I would want to know if I will be forced out from that land even if the whole plot wouldn't be utilised? If I choose to remain on that piece of land how will I be affected by plant? • Last time you mentioned that you're still working together with LAPSSSET does it mean that you're working with them on the railway project? • Even though you have stated that we shouldn't ask questions regarding land issue and compensation, am still going to ask whether we are going to receive the compensation money from you guys or the government? 	Omar Ali Bakari Hindi resident	<ul style="list-style-type: none"> • Land acquisition and compensation will be handled by NLC and LAPSSSET. • On the railway project it good to note that we are working with LAPSSSET on the pipeline project and not the railway. • Once the land has been acquired for the storage tank farm, no one will be able to claim or settle there since would have been compensated.

	Meeting	Issue/Question/Comments	Commentator	Response
12	Lamu County Meeting (09/03/20), KEFRI Conference Hall, Mokowe	<ul style="list-style-type: none"> My question is directed to Mr. Salim Bulu (Regional Coordinator for LAPSSET Lamu County), You have impressed us when you mentioned about the millions that have been put in for the water projects for Mokowe area, but we want you to know that the Port and its subsequent projects haven't benefited or satisfy us in any way we resident of Mokowe since we can't even access or get clean water for our domestic use. Additionally, our Member of Parliament has been missing in action and can't be seen anywhere. Therefore, my question is when are we going to get this clean water that you have mentioned you have invested millions of moneys in it? Is it now or never? Secondly, I want to request the county government to build a stage and a shade for the "Boda boda" riders and residents of Lamu to avoid future accidents. 	Ahmed Lausi Hindi Resident	<ul style="list-style-type: none"> We have heard your cries and we are working with the Coast water works and this problem of water will be resolved soonest, and you will start getting clean water in your households. On the Boda boda shade and Stage, I want to state that plans are already underway just awaiting funds to be released and the construction to begin immediately.
13	Lamu County Meeting (09/03/20), KEFRI Conference Hall, Mokowe	<ul style="list-style-type: none"> From when the meeting begun, I have noticed that the questions being asked, and answers given are not complementing each other. Since you as the consultants are talking about the crude oil pipeline project and storage tank farm while we residents we are talking about land, it is clear to note that 	Peter Mwaura	<ul style="list-style-type: none"> Thank you for the comments they have been recorded and will be forwarded to respective entities to be addressed. On having representative from office of lands in the county government and NEMA offices, please note that we did send invites to the various

	Meeting	Issue/Question/Comments	Commentator	Response
		<p>LAPSSET failed to establish the needs and wants of Lamu residents even after conduct a big study both on the marine life and terrestrial land. For 10 years now we been promised that we will be given title deeds so that when projects come, we can be compensated but till date it hasn't been forthcoming. I want to urge both the county and the national government that these problems in Lamu won't end until all land issues have been resolved and people have received their title deeds and are compensated.</p> <ul style="list-style-type: none"> I suggest that next time when you hold this engagement do have representative from NLC and also NEMA so that when people ask questions, they can get the response they deserve rather than being told to wait for NLC to await response. Additionally, I will suggest that these millions that is being invested in digging boreholes for Mokowe residents should be channelled to bring water from Tana river all the way to Faza so that all residents of Lamu County can get clean and fresh water. 		<p>department in the county government through the county secretary but due to unforeseen circumstance they were unable to make it but we do have county government representatives who will forward the complaints to them.</p>
14	Lamu County Meeting (09/03/20), KEFRI Conference Hall, Mokowe	<ul style="list-style-type: none"> Do note that we people of Kililana aren't against these projects just know we are suffering, and we only want to be given 	Farid Mohammed Kililana Resident	<ul style="list-style-type: none"> Thank you for the comments it has been noted down

	Meeting	Issue/Question/Comments	Commentator	Response
		title deeds so that we get rightful compensation.		
15	Lamu County Meeting (09/03/20), KEFRI Conference Hall, Mokowe	<ul style="list-style-type: none"> Want to speak on education and employment, on the 1000 scholarship awarded to the students, the students were promised employment to work at the port but up to date none of the beneficiary has been employed at the port. Additionally, special cases of disability were left out during awarding of scholarship including the recent 400 student who were taken to school. I would want to request that we need to be considered during the allocation of scholarships and let a certain percentage of the funds be given to sponsor children with disability. 	Erastus Maramba Person with disability representative	<ul style="list-style-type: none"> It has been recorded and will be considered since the LAPSSET people are present in this meeting.
16	Lamu County Meeting (09/03/20), KEFRI Conference Hall, Mokowe	<ul style="list-style-type: none"> When you tell us that the government has no favouritism, I want to refute because up to date there are case where by some people haven't been compensated especially at the port and I know this are just stories you're telling us.' 	Lali Baishe Kililana resident	Your comments have been recorded.
17	Lamu County Meeting (09/03/20), KEFRI Conference Hall, Mokowe	<ul style="list-style-type: none"> I am 75 years old and I want to state that these lies started long time ago. I remember back then we told to leave our land for the prison to be constructed in Hindi and up to date I haven't been compensated or allocated land by the 	Athman Ali Omar Hindi resident	<ul style="list-style-type: none"> Your comments have been well recorded, and this report has taken note of that.

	Meeting	Issue/Question/Comments	Commentator	Response
		<p>government. So, this crude oil and pipeline project I want you to know that we want to be given title deeds so that we can get compensated and continue with our livelihoods rather than continue to languish in poverty with my family.</p>		
18	Lamu County Meeting (09/03/20), KEFRI Conference Hall, Mokowe	<ul style="list-style-type: none"> • I want Mr. Shukri from KPA to address the issue of when the fishermen will receive their compensation of 1.76 billion as ordered by the court. • When you go through the Constitution, you will see that the port is under the county government and yet I don't see them being involved in this development while the source of everything is this port. Therefore, it is important that the county government get profit benefit sharing and the community get certain percentage of the profit, so that even the children and youth of Lamu can get better education and the county government can continue with their development works. This is the resource Lamu county has and I don't seem to understand why the county is not benefiting from it. • I suggest that the youths from Lamu get trained to acquire the technical skills to work at the port and on this LAPSSET projects. 	Abubakar Mohamed Ali Chairman Save Lamu	<ul style="list-style-type: none"> • On the fishermen compensation, I want to state that we will respect and uphold the orders that were given by the Court on 10th October 2010 and all the affected fishermen will be compensated. We hope that the budget 2020-2021 that will be released by the Ministry of treasury will give us the money which then we will liaise with the county government to get the list of all the fishermen so that all of those who were affected then can receive their compensation. • On CSRs, I want to state that KPA has been helping out in project development in Lamu for more than 10 years, I can state that we have built schools and libraries in Pate, Faza, Jipe among other areas, Currently we are working with the county government to know which projects to invest including getting clean water for residents of Lamu.

	Meeting	Issue/Question/Comments	Commentator	Response
		<ul style="list-style-type: none"> We don't see any CSRs project in Mokowe, yet projects are emerging every now and then but the resident of Mokowe continue to suffer due to lack of clean water, they need leverage especially on this water projects 		
19	Lamu County Meeting (09/03/20), KEFRI Conference Hall, Mokowe	<ul style="list-style-type: none"> What are you doing to bring awareness to the community especially in Hindi since we are experiencing violations on the girlchild and women? For instance, if you look at the Lamu port project, they brought in 800 men and 100 women. You find out that our women are loured to these men because they came with money and our people are poor hence leading to family breakages. Kindly look into this matter. 	Pastor Isiah Muriithi Hindi resident	<ul style="list-style-type: none"> The assessment that was done previously that is currently under review by NEMA factored in this matter. It looked at the vulnerable and marginalised groups including women, children, youth, orphans. It sorts to understand their livelihoods of this people and how they would be affected, and a livelihood restoration plan was proposed to cater for this people including looking at their cultural practices and norms.
20	Lamu County Meeting (09/03/20), KEFRI Conference Hall, Mokowe	<ul style="list-style-type: none"> I want to thank you for this meeting you have held and the government official for attending this meeting. My concern is with the farmers who will not be affected by the project directly since their farms don't fall within the pipeline corridor, how are they going to benefit from this project e.g. those who farm Cashew nuts and Coconut? I would like to suggest that LAPSSET should open a factory for the cashew nuts and coconut products to be 	Paul Gitau Muigai Hindi Farmer	<ul style="list-style-type: none"> There are plans within the special economic zone that will look into establishing a factory to cater for this produce so that such farmers get to benefit from the developments.

	Meeting	Issue/Question/Comments	Commentator	Response
		processed so that these farmers get to reap benefit from all these developments.		
21	Lamu County Meeting (09/03/20), KEFRI Conference Hall, Mokowe	<ul style="list-style-type: none"> My concern is with the NEMA officials, they seem not to be concerned with environmental matters here in Lamu especially with certain projects including the small mining activities that happen within our farms where by holes are being left uncovered, when roads are being built there is the recommendation for water to be poured so that to reduce dust pollution but all this seem not to be adhered and the NEMA guys are nowhere to be seen. Its only during construction project that's when you will hear about them and get to see them. I would want this matter to be looked into. 	Henry Katumanya Elder Hindi	<ul style="list-style-type: none"> Your comment has been recorded and it will appear on the report I believe it will be addressed since they responsible for reviewing and issuing the permitting Licence
22	Lamu County Meeting (09/03/20), KEFRI Conference Hall, Mokowe	<ul style="list-style-type: none"> How will the Boni community be catered for in this project since they are marginalised group and are well known as beekeepers and hunters and gatherers who depend mainly on honey and Boni forest for their livelihood. Next time make sure you come with NLC and NEMA officials to these engagements because you keep postponing our issues and questions we ask. I don't understand why we as residents of Lamu are being restricted from 	Osman Guliya Hussein Mokowe Resident	<ul style="list-style-type: none"> We did consult with the Boni community and looked into various ways where we will ensure the project has minimal impacts to the forest and the community. As previously stated, we did send invites to NEMA 2weeks prior to the actually meeting day, hence we don't have control over their attendance. However, your comments have been recorded and will be in the report. The county government representatives and LAPSSET

	Meeting	Issue/Question/Comments	Commentator	Response
		accessing the port, yet we know it is our right to pass through. We only want to see what is happening to satisfy our curiosity kindly look into this matter.		officials are here, they have heard you I believe they will organise an excursion for a few of the residents to go to the port and see what is happening.
23	Lamu County Meeting (09/03/20), KEFRI Conference Hall, Mokowe	<ul style="list-style-type: none"> Am seeing big Company names involved I this project, so how will these companies benefit us because we want them to educate our children and give them employment opportunities in those companies? 	Rose Ochieng Hindi Resident	<ul style="list-style-type: none"> The PPMT is heading towards making the Final Investment Decision, and as part of the main ESIA report we did suggest that these companies to support community projects including offering training to the youths so that they work in the project and become beneficiaries of these projects.
24	Lamu County Meeting (09/03/20), KEFRI Conference Hall, Mokowe	<ul style="list-style-type: none"> What measures have you put in place to address oil spillage in case of leakage since the storage tank farm will be adjacent to the proposed Special Economic Zone? My question is addressed to the County commissioner and County government official, you mentioned that 75% of the money has already been given to the contractor for the water project in Mokowe and yet the residents haven't seen any improvement or progress. Do you want to say that this will be another scandal/scam since money has already been poured? 	Rajab Mohamed Kililana farmers Association	<ul style="list-style-type: none"> The tanks will be built according to the worlds International accepted standards. The tanks will have banding wall that will contain the oil and prevent it from spilling off to neighbouring environment. The contractor s for the water project are the Coast Water works and they have already dug six boreholes in Mokowe and soon residents will start getting clean water in their households.



ESF Consultants
Environmental Management Consultants

APPENDIX A

List of Attendees



PROJECT TITLE		LLCOP ESIA ADDENDUM					
VENUE		KEFRI HALL, MOKOWE					
MEETING		LAMU					
DATE		9 th March 2020.					
No.	NAME OF STAKEHOLDER		DESIGNATION.	ORGANIZATION.	PHONE.	EMAIL.	SIGNATURE.
	FIRST NAMES.	SURNAME.					
1	NASIR ADINAN		MUKHAMA KILIMALAMU TOWN		0716182900		
2	BACARI MOHAMMAD		HINDI		0725671161		
3	ALWATHI KARAMI		HINDI		0726850421		
4	ABDALLA SAIB		KILILANA		671350511		
5	KIYASO NGUMBAO		KILILANG		# =		
6	LALI BALSHE		KILILANG		0727871253		
7	Peter Mwangi		CBP		0726572243		
8	Faizid Mohamed		Kililang		0721679454		
9	SAMUEL KABOGO		MKONDONI		0718839115		
10	JOHN NGEIHE		MKONDONI		0721467109		
11	SILAS MIKWA		P.A-CHAIRP.		0710841959		
12	JOHNSON C. KAZWENYA		HINDI		0702925447		
13	ARDI OMAR MAALIM BURALE		HINDI		0717470700600591		
14	AHMED DAHIR DAGANE		HINDI		0717471348		
15	PAUL GITAU MUIGAI		HINDI	FARMER	0704487492		
16	JAMES OWENGA		FORESTER	KFS	0722459568	owen.g.james@gmail.com	
17	ABDILATIF KUSSEIK		Programme Officer	LAPSET	0720989315	alwaseini@lapset.go.ke	
18	MOHAMED KIETE			ESF	0715349314	kitetemohamed@gmail.com	
19	ATHMAN ALI OMAR		HINDI		0759725968		
20	IBRAHIM SHAIR KHALIF		MOKOWE		0720951233		
21	SALIM MOHAMMAD	BYNU	RE-MANAGER	LAPSET	922730002	3bunyu@lapset.go.ke	
22	JAACAR S. AHMED		MOKOWE		070109307		
23	KASSIM A. HASSAN		LCC (BYNU)	LCC	0722966835	Kassimapho@gmail.com	
24	Abdalla H. Mgham		HINDI	GOIL	074270199	abdallahm@gmail.com	
25	ANUKWARI OMARI SHAHADI		JIPE				



No.	NAME OF STAKEHOLDER.	SURNAME	DESIGNATION	ORGANIZATION.	PHONE.	EMAIL.	SIGNATURE.
26	A.M. KATYSI		HINDI	EGK	0726809165	N/A	<i>[Signature]</i>
27	Joseph Kariye		It ind.	elder	071250832		<i>[Signature]</i>
28	Zipporah Cherungu	MS	Legislat	Z.L. Ltd	0722623773	cherungu@outlook.com	<i>[Signature]</i>
29	Margaret Kanyingi		HINDI	community	0722637384	margaretgml1	<i>[Signature]</i>
30	ATHMAN A. KHERI	KHERI	Edu. Cord.	E. County	0724468337	athm.kheri@yahoo.com	<i>[Signature]</i>
31	Juma Suleika						
32	JAKUMIONO MURGIMA		HINDI	Community	0726869113		<i>[Signature]</i>
33	SOPHIA THUMBI		MOKOWE	Community	074373845		<i>[Signature]</i>
34	PATRICK MUKU		HINDI	Community	070443318		<i>[Signature]</i>
35	GHANUS TWALIB		MOKOWE	Community	0720220394		<i>[Signature]</i>
36	ABDI GARARIE		MOKOWE	Community	0722525113		<i>[Signature]</i>
37	ISAIAH MURITHI		MKONDONI		0721132022	isaiahmurithi19@gmail.com	<i>[Signature]</i>
38	William watatu		MOKOWE	Community	0721534110		<i>[Signature]</i>
39	ANNA WANJIKU		HINDI		0714069931		<i>[Signature]</i>
40							
41							
42							
43							
44							
45							
46							
47							
48							
49							
50							

APPENDIX B

Presentation



The Proposed Lokichar to Lamu Crude Oil Pipeline Project (LLCOP)

ADDENDUM FOR ONSHORE CRUDE OIL STORAGE AT LAMU PORT

ESF CONSULTANTS

WELCOME AND INTRODUCTION

- Welcome
- Introductions

AGENDA

BASELINE STUDY MEETING: LOKICHAR TO LAMU CRUDE OIL PIPELINE PROJECT

1. Purpose of Meeting
2. Project Team
3. Project Status
4. Project Description
 - 4.1 Onshore Crude Oil storage Facility
5. ESIA Process
 - 5.1 ESIA Process Update
 - 5.2 ESIA Addendum Focus
6. Discussions
7. Way forward
8. Closure

1. PURPOSE OF MEETING

- Introduce the Proposed Lokichar to Lamu Crude Oil Pipeline Project and delivery teams.
- Provide an overview of the ESIA process to date.
- Discuss the proposed project variations on crude oil storage at Lamu Port.
- Identify issues, comments and responses regarding the proposed project variations and associated approach.
- Indicate what will happen with the information.
- Indicate how stakeholders can participate in the future.

2. PROJECT TEAM

2.1 LAPSSET

The lead Government of Kenya organisation and leasor of land to the Pipeline.



2.2 PPMT

The Pipeline Project Management Team – consisting of the Governed of Kenya, Tullow Oil plc, Africa Oil Corporation and Total Oil.



2.3 ESIA CONSULTANT

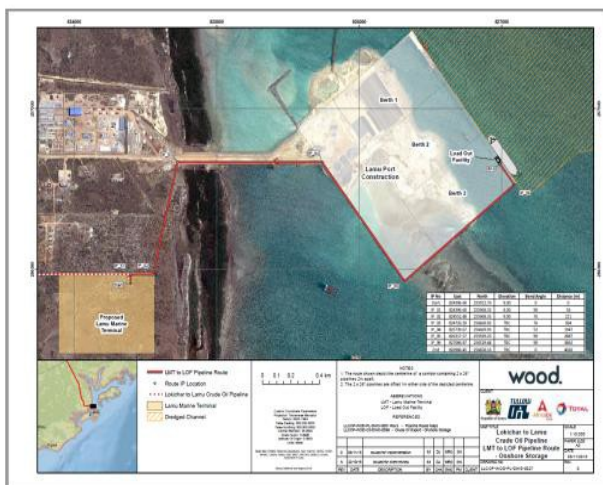
Golder Associates, an independent ESIA consultant selected by GoK-led tender process. ESF Consultants, a Kenya based environmental management consultant is the in country Kenyan component.



3. PROJECT STATUS

- Project design has been completed (Front-End Engineering Design or “FEED”)
- All land for the pipeline (outside Turkana) has been Gazetted and all land surveyed by NLC except close to Ijara
- NLC is now starting engagement activities in Turkana in cooperation with County leadership
- ESIA submitted to NEMA (November 2019) but requires revision (by an “Addendum”) to reflect design changes in Lamu and Garissa
- PPMT is undertaking work to identify suitable companies to bid to construct the pipeline
- The target remains to be in a position to make a final investment decision (FID) by the end of 2020
- So, no final decision has yet been made to proceed with the Project, but all the technical and permitting activities are being completed to support that

4. PROJECT ALTERNATIVE DESCRIPTION



5. ESIA PROCESS UPDATE

- LLCOP ESIA undertaken from March 2018 to October 2019
- Submission of ESIA report to NEMA done n November 2019
- Advertisement on National Dailies done in December 2019
- Variation undertaken December 2019 due to directives of the Pipeline Steering Committee on crude oil storage at Lamu Port from offshore floating storage to an onshore tank farm.
- NEMA requests an Addendum study for affected areas.
- Addendum findings and mitigation measures to identified impacts to be presented to NEMA as Addendum to LLCOP ESIA.
- Notification to be undertaken after submission.
- Public review and comments
- NEMA review.

6. ESIA ADDENDUM FOCUS

- Addendum study focuses on affected area/s
- Stakeholder engagement exercise undertaken in affected areas
- Engagement to focus on change in design and related elements
- All comments to be received and documented
- Record of engagement exercise to be shared with the stakeholders

7. DISCUSSION

- **Facilitated by Mr James Kambo.**
- **Please provide your name and surname.**
- **Focus on LLCOP variation scope.**
- **Land related issues addressed by NLC.**
- **Complete comments and registration sheet.**

CLOSURE

