

MINUTES

Proposed Lokichar to Lamu Crude Oil Pipeline Project: Baseline Consultation

*National Non-Governmental Organisation Nairobi Meeting: 16 November 2018
- Intercontinental Hotel, Nairobi*

Submitted to:

Pipeline Project Management Team

Submitted by:

Golder Associates (UK) Ltd

Cavendish House Bourne End Business Park Cores End Road
Bourne End Buckinghamshire SL8 5AS UK

+44 0 1628 851851

1772867_551.5.2

16 November 2018



Distribution List

Golder (UK) Limited - 1 copy pdf

PPMT - 1 copy pdf

Table of Contents

1.0 WELCOME AND INTRODUCTION	1
2.0 ATTENDEES	1
3.0 AGENDA	1
4.0 PURPOSE OF THE MEETING	1
5.0 PROJECT TEAM	2
6.0 PROJECT BACKGROUND	2
7.0 PROJECT DESCRIPTION	2
7.1 Overview	2
7.2 Route	2
7.3 Technical Aspects	2
8.0 ESIA PROCESS	3
9.0 CONSULTATION PROCESS	3
10.0 IDENTIFICATION OF ISSUES	4
11.0 FUTURE INTENTIONS	13
12.0 CLOSURE	13

TABLES

Table 1: Identified issues, questions, comments and responses	5
Table 2: Attendees that signed the attendance register and took part in the proceedings, grouped by organisation	16
LLCOP ESIA Technical Experts	20
LLCOP ESIA Project Management Team and International Experts	24
LLCOP ESIA International Review Experts	26

APPENDICES

APPENDIX A

List of Attendees

APPENDIX B

Presentation

APPENDIX C

Posters

APPENDIX D

LLCOP ESIA Technical Experts, Senior Reviewers, Project Management Team

APPENDIX E
Biodiversity Discussions

PURPOSE OF THIS DOCUMENT

This document represents the minutes taken during a public meeting convened as part of the Environmental and Social Impact Assessment (ESIA) for the proposed Lokichar to Lamu Crude Oil Pipeline (LLCOP) project in Kenya. The document presents a summary of the issues, concerns, questions, and suggestions raised by the stakeholders at the meeting. The meeting was held on Friday, 16 November 2018 at the Intercontinental Hotel, Nairobi County.

The objective of the meeting was to provide stakeholders with more information about the proposed LLCOP project and associated mitigation measures. The meeting also provided stakeholders with an opportunity to contribute comments, suggestions and raise issues of concern. Issues and questions raised during the meeting were captured in the Comment and Response Report. This report will form part of the final ESIA report to be submitted to the relevant authority for a decision.

Your comments are important!

Stakeholders who attended the meeting are invited to review the draft minutes and ensure that the questions, concerns, and comments have been captured correctly. Please send any comments and changes that you would like to make within 14 days of receipt to the Public Participation Office.

Address for Comments:

Mr James Kambo

Stakeholder in-country lead (ESF Consultants)

Telephone

(+254) 736 100205

Email

james.kambo@esfconsultants.org/ppoffice@golder.co.za

Address

Woodlands Office Park,
1C Suite 1st Floor
Woodlands Road, off Lenana Road
PO Box 7745-00100
Nairobi, Kenya

1.0 WELCOME AND INTRODUCTION

The meeting was brought to order by Mr James Kambo at 09h30, who welcomed and thanked the guests for attending the meeting. Mr Kambo briefed the attendees on the scoping phase, which was conducted in June 2018 and stated that the scoping report together with the Terms of Reference (ToR) were submitted to the National Environmental Management Authority (NEMA), and the ToR was subsequently approved. He stated that the purpose of the meeting was to inform the county government officials and representatives about the stakeholders' engagement process that will be taking place in the county, where they will be engaging with the local communities to obtain an understanding of the social structure and livelihoods of the people and communities that will be affected by the project.

2.0 ATTENDEES

Mr James Kambo requested the guests to introduce themselves. 17 attendees signed the attendance register and took part in the proceedings. See APPENDIX A in this regard.

3.0 AGENDA

The following agenda was presented to, and accepted by the participants:

- 1) Purpose of meeting
- 2) Project team
- 3) Project progress
- 4) Consultation process
- 5) Community *barazas* (meetings)
- 6) Community consultation approach
- 7) Social baseline
- 8) ESIA ongoing biodiversity work
- 9) Stakeholder engagement focus
- 10) Discussions
- 11) Way forward
- 12) Closure

4.0 PURPOSE OF THE MEETING

Mr James Kambo explained the purpose of the meeting as follows:

- Presenting progress on the planning activities for LLCOP project and delivery teams.
- Provide an update of ESIA Scoping Phase findings, issues, comments and responses regarding the proposed project and associated approach.
- Discuss the proposed Community Stakeholder Consultation approach.
- Discussion Social Baseline Development process.
- Receive any comments on the above findings and the proposed approach to community engagements.

- Indicate how stakeholders can participate in the future.

5.0 PROJECT TEAM

Mr James Kambo introduced the project teams and explained the role each team plays in the LLCOP project as follows:

- The government of Kenya – sets the strategy;
- LAPSSET Corridor Development Authority (LCDA) – the authority responsible for the development of the LAPSSET corridor;
- Pipeline Project Management Team (PPMT) – the partnership between government (Ministry of Mining and Petroleum – MoMP) and oil companies to develop the pipeline project; and
- Golder and ESF Consultants – the independent consultants, appointed to undertake the ESIA.

6.0 PROJECT BACKGROUND

An overview and background of the proposed project were presented to attendees. All development projects are subject to an ESIA process in terms of the Environment Management and Coordination Act (2015). This is the first permitting study undertaken for the proposed LLCOP project. Several related studies have been undertaken and include a Strategic Environmental Assessment for the LAPSSET corridor project and an ESIA study for the Kenya Upstream Oil Development project.

Golder Associates, in partnership with ESF Consultants, Kenya, have been appointed to undertake the ESIA study.

7.0 PROJECT DESCRIPTION

7.1 Overview

The LLCOP project is a development initiative under a joint partnership between the Kenya Government and the consortium consisting of Tullow Oil Kenya B.V., Africa Oil Turkana Ltd and Total Oil (formally Maersk Oil). The proposed LLCOP project is an onshore pipeline that will provide transportation of crude oil from the production fields in South Lokichar to the marine export facility at the Port of Lamu. There it will be stored and onward exported to international markets. The project will link the upstream oil fields (being permitted separately) with international markets.

7.2 Route

The LLCOP project will commence at a flange point in Turkana County, south-east of the Lokichar oil fields, and end at the Port of Lamu. The LLCOP route is within the LAPSSET corridor and will cut across Turkana, Samburu, Isiolo, Meru, Garissa and Lamu counties. The crude oil pipeline will be approximately 820 kilometres long. Areas of land where the proposed pipeline will pass will be acquired by the government and leased to the project.

7.3 Technical Aspects

The proposed project will be executed in a phased manner. The construction time will be approximately two to three years.

The construction of the pipeline will entail excavation of a trench, two metre in depth, along the proposed pipeline route. A conventional trench and backfill construction methodology will be followed. The pipeline will be buried throughout its length with a minimum of one metre of soil cover. The pipe itself will be 18 or 20 inches in diameter. The proposed pipeline will need a 30 metre width for construction and a six metre width for operations. Due to

the heavy and waxy consistency of the crude oil, the pipeline will be heated and insulated to keep the crude oil at the optimum viscosity for pumping. The heating will be done through a longline trace system.

There will be approximately 16 intermediate above ground installations (either co-located or standalone), which include pump stations, pressure reduction stations, and electrical generators.

A marine terminal will be constructed at the Port of Lamu. The terminal will comprise storage facilities (1.5 million barrels capacity), a loading line and a marine platform with breasting and mooring structures. The Lamu terminal options under evaluation are an onshore storage and offloading jetty, or a floating storage and offloading vessel. The onward exportation of the crude oil to international markets will take place by ship.

8.0 ESIA PROCESS

This ESIA is being undertaken to acquire the necessary permits to implement the proposed project. The Environmental Management and Coordination Act of 2015 provides detailed guidelines on conducting Environmental Impact Assessments (EIAs) in Kenya. The Act states that all new projects that are likely to affect the environment in any way must undertake an ESIA, and the ESIA report should then be submitted to NEMA for review and approval.

The objective of this ESIA study is to investigate and identify the positive and negative impacts of the pipeline construction and operations. The study will then generate feasible mitigation measures for adverse impacts through an Environmental and Social Management Plan. These studies and recommendations will be done through field investigations, document review, professional analysis, and stakeholder engagements.

The ESIA process entails the following elements:

Scoping Study – An initial field and baseline data reviews as well as early stakeholder engagement to define the scope of the ESIA.

Terms of Reference (ToR) – During this phase, the framework and proposed methodology for the assessment of environmental and social impacts are developed. The ToR phase includes a presentation of the project, proposed ESIA update process and the public consultation process.

Environmental Impact Study (EIS) – This phase entails an impact assessment and will address the issues raised during the ToR phase. A Draft EIS report will be developed and presented to the public for review and discussion. The EIS is then finalised and submitted to NEMA for approval (the decision-making phase).

The ESIA permitting study should be completed by March 2019.

9.0 CONSULTATION PROCESS

The stakeholder engagement process is a requirement of the Kenya Environmental Impact Assessment guidelines and is being undertaken to provide the opportunity for communities, potentially affected and interested people to participate by raising issues, concerns, asking questions and contributing local knowledge.

Stakeholder participation in the process will help to identify and address their concerns early in the project design phase. Stakeholder contributions collected during this process will be recorded and made publicly available in a Comment and Response Report for people to verify that their contributions have been recorded correctly. Special efforts will be made to engage with potentially directly affected people, including women, the youth, as well as local, regional, and national educational and religious organisations, research institutions, non-governmental organisations, and other key organisations. Public meetings and workshops will be held to record comments and suggestions from the public.

This ESIA process commenced in March 2018 and will be completed in March 2019. Availability of reports, times, and location of public meetings will be advertised in the local media and via site notices. The final EIS update will be made available in public places, for review.

Stakeholders will be informed throughout the stakeholder engagement process of this ESIA. Any queries and concerns can be raised at any time through the contacts provided.

10.0 IDENTIFICATION OF ISSUES

All questions, issues, comments, and associated responses raised during the discussion session are captured in Table 1.

Date of meeting: 16 November 2018

Venue: Intercontinental Hotel, Nairobi, Nairobi County

Table 1: Identified issues, questions, comments and responses

	Meeting	Issue/Question/Comments	Commentator	Response
1	National NGO Meeting, 16 November 2018, Nairobi County	When was the scoping report submitted to NEMA? When was it submitted to the stakeholders who attended the meeting because I was present in June and I did not receive a copy? When was the ToR submitted and when were they approved? I did not see them in the presentation.	Per Karlsson African Wildlife Foundation (AWF)	The report was submitted to NEMA on 17 August 2018 and approved on 19 October 2018. We sent out the reports to those who requested it, but will send again after the meeting.
2	National NGO Meeting, 16 November 2018, Nairobi County	Is the scoping report and ToR a substitute for the project ESIA report?	Rose Birgen Natural Justice	The essence of a scoping report is to generate the ToR which is used for the full ESIA study.
3	National NGO Meeting, 16 November 2018, Nairobi County	My understanding is that you submitted the scoping report to NEMA on 3 October 2018 and started the consultation on the 12 October 2018.	Sarah Chiles Ewaso Lions and Grévy's Zebra Trust	No, we submitted the ToR in August, and it was approved in October. NEMA took time to review the documents and sent their comments late, which is why you have the report dated 3 October which was the revised version after we reviewed the NEMA comments.
4	National NGO Meeting, 16 November 2018, Nairobi County	The pipeline servitude is 30 metres within the LAPSSET corridor which is 500 metres. Why is your study and public consultation not conducted for the 500 metres as all these projects will impact the environment? Is this not repetitive?	Patrick Muraguri Gatuma Kenya Oil and Gas Working	Under Kenyan law, each project must undertake an independent EIA study, and the pipeline project is one of the components of the LAPSSET projects. Each project will have a separate ESIA. The 30 m is the area for the construction phase while the 6 m is during the operational phase and is only for the LLCOP project. The scope of the

	Meeting	Issue/Question/Comments	Commentator	Response
			Group (KOGWG)	study considers the area of influence, including the social and biophysical aspects, and the implication of the impacts.
5	National NGO Meeting, 16 November 2018, Nairobi County	<p>Allow me to congratulate the PPMT for the approach they have undertaken to engage at the community level. They have done a commendable job.</p> <p>The trade ministry would like to see a copy of the biodiversity report as we would like to address any trade policy implications or issues that may occur because of the project. It is also important that the ministry puts forward their concerns.</p> <p>We would like to be advised of the economic impacts of the pipeline route on the affected communities.</p>	Lucas Mwago State Department of Trade	Thank you for the acknowledgement of our work. We will share the biodiversity report with you once it is complete.
6	National NGO Meeting, 16 November 2018, Nairobi County	<p>Please clarify the total number of people consulted as the presentation figures are inconsistent.</p> <p>Do you have attendance records?</p>	Eva Maria Anyango Natural Justice	<p>The figure of 583 represents the number of people we consulted during the scoping phase while the 5 300 represents the total number of people that were consulted with since the start of the scoping phase up until the date of the meeting. <i>Note: Upon conclusion of all Stakeholder Engagement Meetings in January 2019, 6 023 people signed attendance registers and took part in meetings, of which there were one hundred and sixty-one.</i></p> <p>Yes, attendance records for all meetings are available.</p>
7	National NGO Meeting, 16	Have the project team reviewed the human rights aspect or is that a part of the social study?	Muturi Kamau Kenya Oil and	<p>Human rights are considered under the social aspects.</p> <p>One of the basic issues that has come up repetitively is community ownership of land, which we have looked at</p>

	Meeting	Issue/Question/Comments	Commentator	Response
	November 2018, Nairobi County	Please confirm any human rights issues you have encountered during the stakeholder engagement process.	Gas Working Group	<p>through the land acquisition process by LAPSSSET which is, however, outside the mandate of this project.</p> <p>Another issue is access to livelihood resources and whether the project will be limiting the access to these resources. In addition, the impact of the project on the communities, livelihood, and ways to minimise the impacts are being considered.</p>
8	National NGO Meeting, 16 November 2018, Nairobi County	The EIAs should be carried out further away instead of in the 30 m section since the whole corridor is 500 m wide.	Julius M. Nginya Ministry of Transport	<p>This will be considered in the studies that are currently ongoing such as the geotechnical survey, and by the ESIA team who are looking at the critical sites. Eventually, these studies will be used to determine the pipeline route.</p> <p>We have located the pipeline 50 m away from the edge of the 500 m wide corridor. We have worked closely with the Kenya highway authority to see that there are minimal interception and crossings with the roads.</p>
9	National NGO Meeting, 16 November 2018, Nairobi County	The pipeline corridor passes mostly over communal land. When the exact route is known, people from other areas will move in and erect structures on that land to receive compensation. What precautionary measures have you put in place to ensure that such incidents do not occur because it will result in large amounts of compensation being paid?	Paul Koros State Department of Arid and Semi-arid Lands	The process of gazetting land and survey for the pipeline route has been completed. The National Land Commission (NLC) has a clear understanding of existing structures and land uses along the pipeline corridor. The pipeline team has also taken very detailed satellite studies which are dated, and those people who interfere with the system will not be compensated. The NLC is working closely with county administration to ensure there is a clear process which is well defined and is understandable to the communities to minimise the risk of influx.

	Meeting	Issue/Question/Comments	Commentator	Response
10	National NGO Meeting, 16 November 2018, Nairobi County	<p>Did your field team come across areas where communities identified cultural and sacred sites that will hinder the project?</p> <p>What measures have you put in place to address such issues?</p>	Ephantus Githu State Department of Culture and Heritage	Yes, we have found such sites through focus group discussion, and we are carrying out studies and mapping those sites to determine the pipeline route. The same studies have been applied to archaeological and heritage sites where we have engaged with experts from National Museums of Kenya so that they can be mapped out and mitigation measures provided. The sites will eventually be superimposed on the alignment of the pipeline route.
11	National NGO Meeting, 16 November 2018, Nairobi County	<p>What date was approved by NEMA for the commencement of the stakeholder consultation process?</p> <p>How did you compile your list of NGOs to attend this meeting; it appears to be poorly supported. There are many other NGOs that would like to contribute to this process.</p> <p>How will the pipeline route be rehabilitated and what grass species will be replanted, since lions prefer a cover grass?</p> <p>What invasive species have you identified? How will the county governments be compensated to deal with the invasive species? Which programme will be used for the management of invasive species?</p> <p>We would like to know who the teams of experts are and to what extent our inputs are received and when we can interact with them.</p>	Resson Kantai Duff Ewaso Lion Project and Conservation Alliance	<p>The dates of approval will be forwarded to you.</p> <p>We sent out invites to many NGOs, including those whom we were recommended to invite from the previous meeting that was held in June, but we cannot force people to attend. You can, however, suggest who should be invited for the next meeting.</p> <p>The baseline studies are currently ongoing. There will be another round of engagement to present our findings.</p> <p>The type of grass species to be used has not been finalised and will be selected to minimise invasive species. There will be a programme of rehabilitation, for which we welcome your contributions and suggestions.</p> <p>We can provide you with the names of the experts who are working with the Kenya Wildlife Service and the National Museums of Kenya.</p> <p>We will take your contact details to get more information.</p>

	Meeting	Issue/Question/Comments	Commentator	Response
12	National NGO Meeting, 16 November 2018, Nairobi County	<p>Land issues are very sensitive in Kenya, and the government is developing a Resettlement Action Plan to address this matter. Does this mean that the NLC is restricted to dealing with compensation issues only along the pipeline route?</p> <p>How have you anticipated the issues such as where pastoralists construct <i>manyattas</i> (settlements) along the pipeline route? Will this be prohibited?</p>	Muturi Kamau Kenya Oil and Gas Working Group	<p>The NLC will respond to all queries on land acquisition.</p> <p>We are studying the pastoral shifts and mapping the areas they move to, the regions and the seasons that are important to them. We are working with key informants to record the correct data and solutions.</p>
13	National NGO Meeting, 16 November 2018, Nairobi County	<p>How long before the ESIA study is completed and the findings are presented to the stakeholders?</p> <p>At what point of the study do you report back to the communities?</p> <p>What studies will be conducted to address climate change?</p> <p>According to the people who attended the meetings in Isiolo and Lamu counties, the information provided to the community has not been adequate; how will you improve on that?</p> <p>We know the strategic environmental assessment (SEA) was approved this year. How do you intend to integrate the SEA findings and shortfalls into the current ESIA process?</p>	Rose Birgen Natural Justice	<p>One of the ways to bridge the gaps in the process is through engagements with stakeholders which enables us to pick up such information.</p> <p>We are doing our own independent ESIA to identify the impacts, and climate change studies will be based on the pipeline project and focus on different patterns of rains as one part of our analysis.</p> <p>We have endeavoured to conduct a robust engagement along the pipeline route, but we are open to consider aspects which you think can be improved upon. We have been in discussions with the relevant authorities such as NEMA to understand those characteristics and species to get valid a report.</p> <p>Once the impact assessment is complete, we will present the mitigation measures to the stakeholders for consideration and approval. We anticipate that the report will be submitted during the first or second quarter of 2019.</p>

	Meeting	Issue/Question/Comments	Commentator	Response
14	National NGO Meeting, 16 November 2018, Nairobi County	<p>We know that the baseline consultation has begun on 12 October; when will the consultation end?</p> <p>How many focus group discussion consultations have been held?</p> <p>Which environmental partners have you consulted with concerning biodiversity studies?</p> <p>Can you provide the alternatives you considered for this project?</p> <p>Who is responsible for the long-term management of the land acquired by LAPSSET?</p>	Sarah Chiles Ewaso Lions and Grévy's Zebra Trust	<p>Stakeholder engagement is a continuous process, and we do not have a timeline because we would like more inputs. We plan to have another round of stakeholder engagement in February and March 2019 where we will present our findings and mitigation measures.</p> <p>At the moment, we do not have exact numbers, but we will share this once we have completed the process. Data from the focus group discussions will form the basis that will be shared with other LAPSSET projects to ensure an equal understanding of the economic structures. <i>Note: upon conclusion of the Focus Group Meetings in January 2019, a total of one hundred and sixty-one (161) meetings were held.</i></p> <p>A list of the technical experts and senior reviewers involved in compiling the ESIA is set out in APPENDIX D. A further list of meetings that took place during the biodiversity study is contained in APPENDIX E.</p> <p>Key alternatives looked at in this project were the route and technologies with consideration to minimise impacts on the environment.</p> <p>An Environmental Social and Management Plan will be developed from the ESIA for long-term management, but this is currently not available.</p>

	Meeting	Issue/Question/Comments	Commentator	Response
15	National NGO Meeting, 16 November 2018, Nairobi County	You need to send the meeting invitations out to a wider audience to include more people at the community level to receive more information and ideas.	Patrick Muraguri Gatuma Kenya Oil and Gas Working Group	We cannot control who will attend the meetings. We send numerous invitations. We will consider all suggestions to invite additional attendees.
16	National NGO Meeting, 16 November 2018, Nairobi County	How will the community benefit from this project? What benefits are there for the communities, e.g. improved water amenities and new schools? Have these issues been brought up and how have they been addressed?	Purity Kamau State Department of Industry	Yes, community benefits issues were raised and captured, however, these are still being reviewed by the project team. We are looking at both the positive and negative impacts of the project and providing mitigation measures where relevant regarding population influx. The corporate social responsibility programme was raised, and this has been forwarded to the PPMT. It was also captured in the ESIA report.
17	National NGO Meeting, 16 November 2018, Nairobi County	Thank you, David, for the assurance that we are important in this project, and to Simon for the information on how the construction camps will be set up. Please, can you also provide information on the work enforcement plan, e.g. the construction group and their work schedule? Please provide us with copies of the posters you used during the community engagements so that we can see whether the information provided was understandable.	Resson Kantai Duff Ewaso Lions Project and Conservation Alliance	These engagements provide us with information, for input into the management and work plan, to ensure the construction work has a minimal impact on migratory routes and the wildlife. We will refer your request for work enforcement plans etc. to the PPMT team. The posters will be updated to provide a better understanding of the project and its process and shared with the communities. Please refer to APPENDIX C for posters used during the consultation process.

	Meeting	Issue/Question/Comments	Commentator	Response
18	National NGO Meeting, 16 November 2018, Nairobi County	What common issues were raised during the community engagements?	Justus Erus Edung National Museums of Kenya	<p>The community wants to know:</p> <ul style="list-style-type: none"> about the project, what benefits will result from the project, how the governments intend to acquire the land, how the project will affect livelihoods and the resources they depend on, the impacts on cultural sites and wildlife as these are important, especially in Samburu, how issues of contamination and pollution from pipeline spillages will be addressed and mitigated, what compensation will be paid for loss of traditional resource use, e.g. traditional medicine and sacred trees, and Impact on health.

11.0 FUTURE INTENTIONS

Mr James Kambo indicated that the information sourced during this meeting would be captured in formal minutes and a comments and responses register. He added that several meetings had been arranged in different towns within the counties where the pipeline will pass, for communities to be involved during the process and provide information to the ESIA team to promote an understanding of their social context. It was also to provide opportunities for the communities to put forward issues and concerns that need to be considered in the project. Mr Kambo stated that the consultation process is set to end soon with Turkana the only county where consultation had not taken place; this was due to take place in the next two weeks and all comments and issues raised will be captured for reporting. The consultation process will continue to engage with stakeholders and communities at the county and community level, as needed.

12.0 CLOSURE

All participants were thanked for their attendance, comments, and input. The issues would be captured, and the meeting minutes distributed in due course. The meeting was closed by Mr James Kambo.

Signature Page

Golder Associates (UK) Ltd



James Kambo
Stakeholder in-country lead (ESF Consultants)



Tim Flower
Project Manager

JK/TF

Company Registered in England No.1125149.

At Attenborough House, Browns Lane Business Park, Stanton-on-the-Wolds, Nottinghamshire NG12 5BL

VAT No. 209 0084 92

Golder and the G logo are trademarks of Golder Associates Corporation

APPENDIX A


List of Attendees

Table 2: Attendees that signed the attendance register and took part in the proceedings, grouped by organisation

	Name	Organisation
1.	Per Karlsson	African Wildlife Foundation
2.	Liz Kiambi	African Wildlife Foundation
3.	Sarah Chiles	Ewaso Lions and Grévy's Zebra Trust
4.	Resson Kantaiduff	Ewaso Lions Project and Conservation Alliance
5.	Patrick Muraguri Gatuma	Kenya Oil and Gas Working Group
6.	Muturi Kamau	Kenya Oil and Gas Working Group
7.	Julius M. Nginya	Ministry of Transport
8.	A. Mwangi	Ministry Of Petroleum and Mining
9.	Veronicah Muiruri	National Museum of Kenya
10.	Justus Erus Edung	National Museum of Kenya
11.	Eva Maria Anyango	Natural Justice
12.	Rose Birgen	Natural Justice
13.	Paul M. Koros	State Department of Arid and Semi-arid Lands
14.	Ephantus W. Githu	State Department of Culture and Heritage
15.	Purity Kamau	State Department of Industry
16.	Lucas R. Mwangi	State Department of Trade
17.	Samuel Ngei	Transparency International Kenya

APPENDIX B

Presentation



The Proposed Lokichar to Lamu Crude Oil Pipeline Project (LLCOP)

STAKEHOLDER CONSULTATION COUNTY LEVEL UPDATE WORKSHOP


GOLDER
October 2018

1

WELCOME AND INTRODUCTION

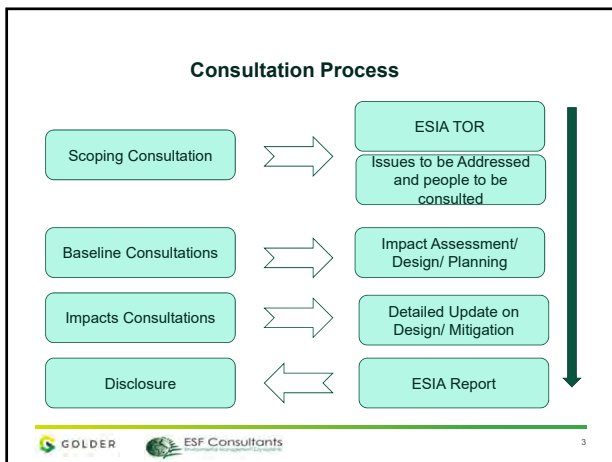
Welcome

Introductions



LOKICHAR TO LAMU CRUDE OIL PIPELINE PROJECT 2

2




3

AGENDA

BASELINE STUDY MEETING: LOKICHAR TO LAMU CRUDE OIL PIPELINE PROJECT

1. Purpose of Meeting
2. Project Team
3. Project Progress
4. Consultation Process
5. Community Barazas
6. Community consultation approach
7. Social Baseline
8. ESIA ongoing Biodiversity work
9. SE Focus
10. Discussions
11. Way forward
12. Closure




4

4

1. PURPOSE OF MEETING

- Present progress on the planning activities for Lokichar to Lamu Crude Oil Pipeline Project and delivery teams.
- Provide an update of ESIA Scoping Phase findings, issues, comments and responses regarding the proposed project and associated approach.
- Discuss the proposed Community Stakeholder Consultation approach.
- Discuss Social Baseline Development process.
- Receive any comments on the above findings and proposed approach to community engagements.
- Indicate how stakeholders can participate in the future.




LOKICHAR TO LAMU CRUDE OIL PIPELINE PROJECT 5

5

2. PROJECT TEAM


2.1 LAPSSET

The lead Government of Kenya organisation and leasor of land to the Pipeline.





2.2 PPMT

The Pipeline Project Management Team – consisting of the Governed of Kenya, Tullow Oil plc, Africa Oil Corporation and Total Oil.



2.3 ESIA CONSULTANT

Golder Associates, an independent ESIA consultant selected by GoK-led tender process. ESF Consultants, a Kenya based environmental management consultant is the in country Kenyan component.

LOKICHAR TO LAMU CRUDE OIL PIPELINE PROJECT 6

6

3. PROJECT PROGRESS

3.1 FRONT END ENGINEERING & DESIGN

- FEED Studies are underway and expected to end in December 2018.
- Draft Construction Report already generated and inputs from ESIA and geotechnical survey to be incorporated.

3.2 GEOTECHNICAL SURVEY

- Topographical survey and installing survey beacons
- Drilling of core soil/rock samples.
- Digging trial pits at appointed locations

3.3 ESIA

- Scoping study completed and submitted to NEMA.
- Terms of Reference Sent to NEMA for approval.
- Baseline (Biophysical) underway.

7

GEOTECH ACTIVITIES



8



9



10

INDICATIVE CONSTRUCTION CAMP LOCATIONS



11

LAND ACQUISITION

- Land will be acquired by LAPSET through the National Lands Commission.
- Land acquired will form the LAPSET Corridor – 500 m wide
- LAPSET will lease to pipeline approximately 30m wide corridor during construction and this will reduce to 6m during operations.
- Process to follow the requirements of the Constitution and legislation on land acquisition.
- NLC will soon be implementing the acquisition exercise and their officers will be visiting the areas in the corridor to sensitize the communities.

12

4. SUMMARY OF SCOPING CONSULTATION PROCESS

Date	Meeting/ Type	Total Number Participants
11 June 2018	Parliamentarian Forum - Nairobi	38
12 June 2018	National and NGO Meeting - Nairobi	57
18 June 2018	County Meeting - Isiolo	58
19 June 2018	County Meeting - Meru	45
21 June 2018	County Meeting - Garissa	120
25 June 2018	County Meeting - Lamu	134
27 June 2018	County Meeting - Samburu	93
29 June 2018	County Meeting - Turkana	38
Total Attendees		583

13

5. COMMUNITY STAKEHOLDER CONSULTATION APPROACH

Community engagement set out under three teams consistent with the scoping phase approach i.e.

- Team 1 Garissa and Lamu –
 - Regional Lead: Duncan Oyaro
 - Garissa Assistants: Sirad Madhowo and Abdijabar Hussein Aden
 - Assistant: Mohamed kitete
- Team 2 Isiolo, Meru and Samburu
 - Regional Lead: Hajir Mohamed
 - Meru Assistant: Bernard Murithi; Isiolo Assistant: Jelle Ali Adan;
 - Samburu Assistant: Hillary Sisina
- Team 3 Turkana
 - Regional Lead: Michael Kapolon
 - Assistant: Maurice Ikaal

14

6. COMMUNITY BARAZAS



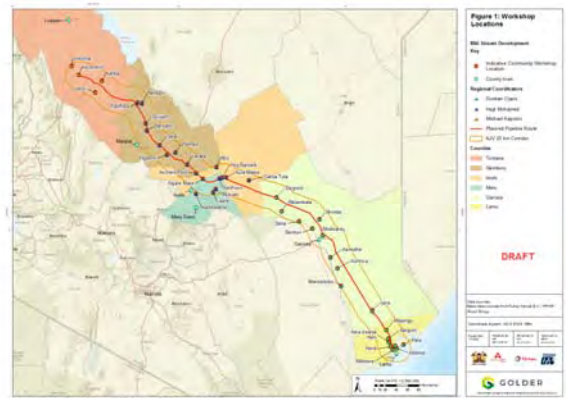
Use of poster to help communities understand the project and construction of the pipeline



Communities will be engaged through barazas in available meeting halls or out in open field

15

COMMUNITY STAKEHOLDER ENGAGEMENT LOCATIONS



16

COMMUNITY MEETINGS



- Community Engagements on-going
- 36 meetings held so far
- Over 5,300 people consultations

17

7. SOCIAL BASELINE

- Social Baseline to be collected through Focused Group Discussions.
- Baseline data to focus on cultural and socio-economic characteristics of people that will be directly affected person particularly vulnerable groups.
- FGD teams to consist of Facilitator and Documenters with a set of translators in-office.
- Groups to be engaged include resource-use groups (farmers, pastoralists, gums and resins, beekeeping etc), women's and youth groups as so forth.
- FGD teams will have guidelines provided that will provide direction on the nature of questions.

18

FOCUSED GROUP MEETINGS



19

8. ESIA ONGOING BIODIVERSITY ACTIVITIES



- Progress and on-going work
- Key areas, issues and findings
- Future work

20

9. STAKEHOLDER ENGAGEMENT FOCUS

- Legal Requirement.
- Opportunity for stakeholders to participate in ESIA process.
- To inform and consult.
- Integrate and consider stakeholder viewpoints in the ESIA.
- All stakeholder contributions recorded and disclosed.
- Identify vulnerable groups, including women, the youth, indigenous peoples and disempowered people.
- Information in public domain.
- Provide feedback on results and information use.

21

10. DISCUSSION

Facilitated by Mr James Kambo.

- Please provide your name and surname.
- Focus on LLCOP.
- Land related issues addressed by NLC – so outside our discussions.
- Complete comments and registration sheet.

22

11. WAY FORWARD

- Event timelines.
- Future consultation.
- Availability of information.
- Record Key issues for each meeting.
- Project deliverables.
- ESIA process continuation.

23

Closure

24